

**PANS-OPS
 INSTRUMENT APPROACH CHART**

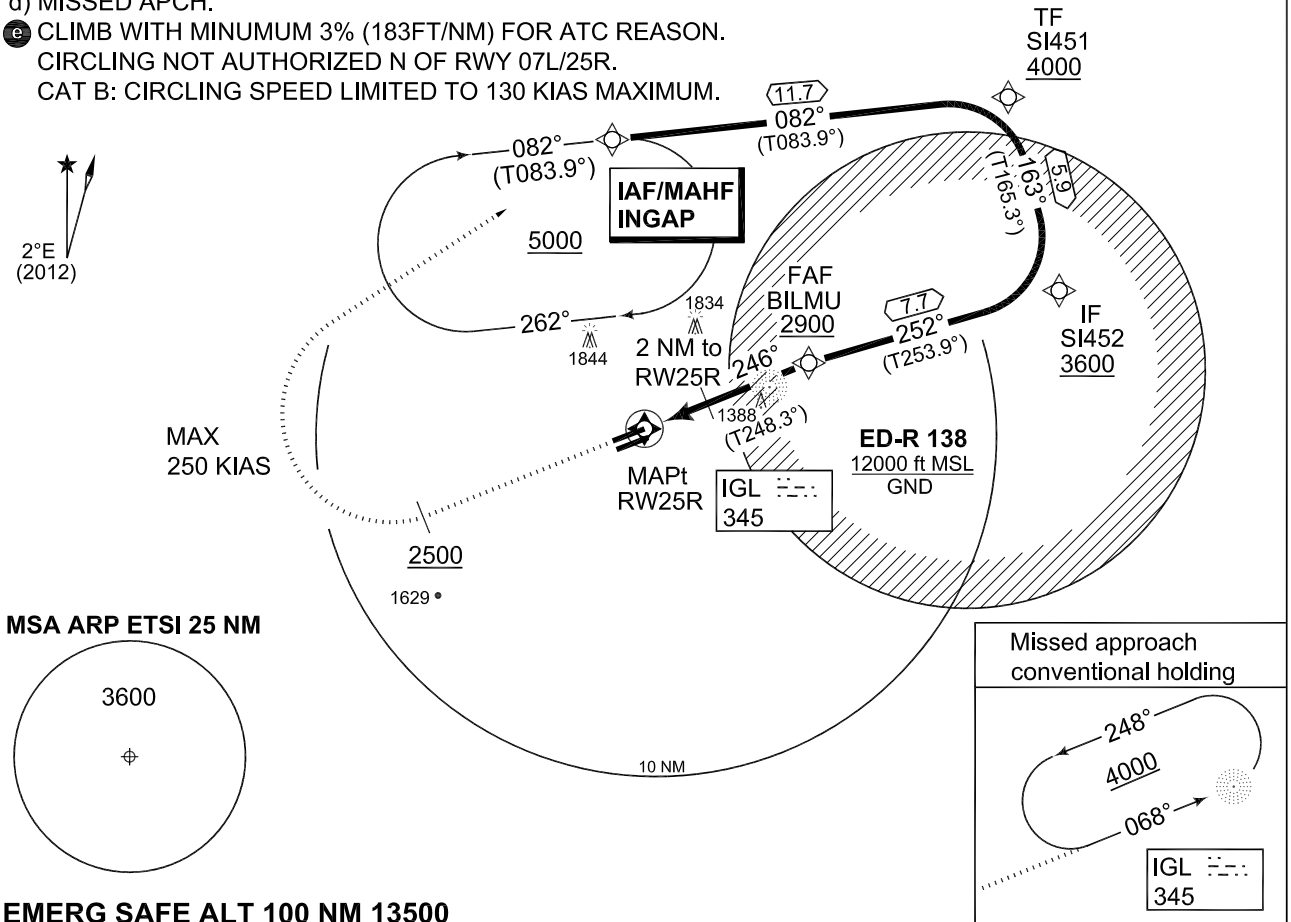
AD ELEV 1203

**RNAV (GNSS) RWY 25R
 INGOLSTADT/MANCHING (ETSI)**

MUENCHEN RADAR 242.200	INGO RADAR 278.100 120.600 125.575			INGO TWR 373.200 125.250			
NDB IGL 345	APP COURSE 246°	FAF ALT 2900	GS 3.1°	MDA see CAT	TDZE 1191	ALS-Length 900 M	LDA 8000

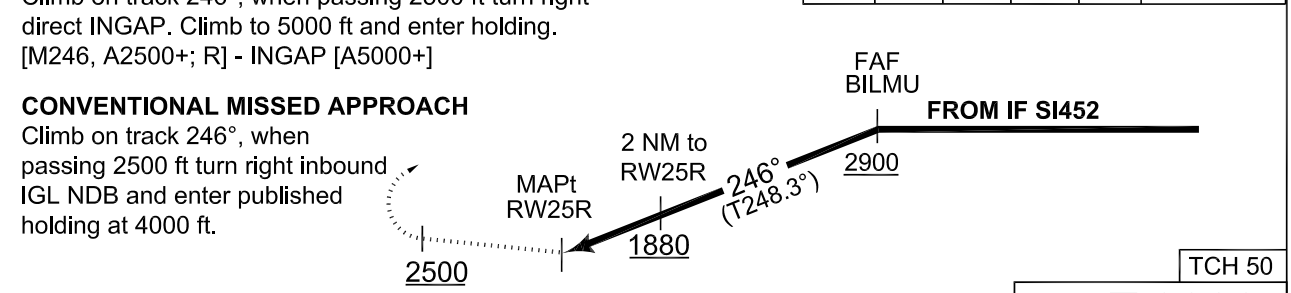
NOTE:

- a) GPS QUALIFICATION REQUIRED.
 - b) MISSED APCH TURN LIMITED TO KIAS 250.
 - c) NO TURN BEFORE MAPt.
 - d) MISSED APCH:
 - e) CLIMB WITH MINIMUM 3% (183FT/NM) FOR ATC REASON. CIRCLING NOT AUTHORIZED N OF RWY 07L/25R.
- CAT B: CIRCLING SPEED LIMITED TO 130 KIAS MAXIMUM.



EMERG SAFE ALT 100 NM 13500

MISSED APPROACH Climb on track 246°, when passing 2500 ft turn right direct INGAP. Climb to 5000 ft and enter holding. [M246, A2500+; R] - INGAP [A5000+]	TA 5000					Distance THR
	1	2	3	4	5	Altitude
	1550	1880	2210	2540	2870	



TDZE 1191	5.1	CAT I
-----------	-----	-------

CATEGORY	A	B	C	D	E
MINIMA ACCORDING TO MIPS CRITERIA					
GNSS 25R	1590 - 1.6 398 (400-1.6)			1610 - 2.0 418 (400-2.0)	1650 - 2.4 458 (500-2.4)
e) CIRCLING	1700 - 1.6 497 (500-1.6)	1700 - 1.6 497 (500-1.6)	2480 - 4.8 1277 (1300-4.8)	2630 - 4.8 1427 (1500-4.8)	2630 - 4.8 1427 (1500-4.8)

RNAV (GNSS) RWY 25R 48°42.94'N 011°32.02'E **INGOLSTADT/MANCHING (ETSI)**

CHANGE: NOTE (180/12)

AFSBw 18 OCT 2012

**PANS-OPS
INSTRUMENT APPROACH CHART**

**WAY POINT LIST RWY 25R
INGOLSTADT/MANCHING (ETSI)**

RWY 25R from INGAP APPROACH RNAV (GNSS)

INGAP (IAF)	48 51 58.000 N	011 31 06.000 E
SI451 (TF)	48 53 11.000 N	011 48 47.000 E
SI452 (IF)	48 47 30.243 N	011 51 02.812 E
BILMU (FAF)	48 45 22.416 N	011 39 55.808 E
RW25R (MAPt)	48 43 29.275 N	011 32 46.195 E
INGAP (MAHF)	48 51 58.000 N	011 31 06.000 E

Threshold Coordinates

RWY 25R	48 43 29.275 N	011 32 46.195 E
---------	----------------	-----------------

CHANGE: NOTE (180/12)

AFSBw 18 OCT 2012

WAY POINT LIST RWY 25R

INGOLSTADT/MANCHING (ETSI)