

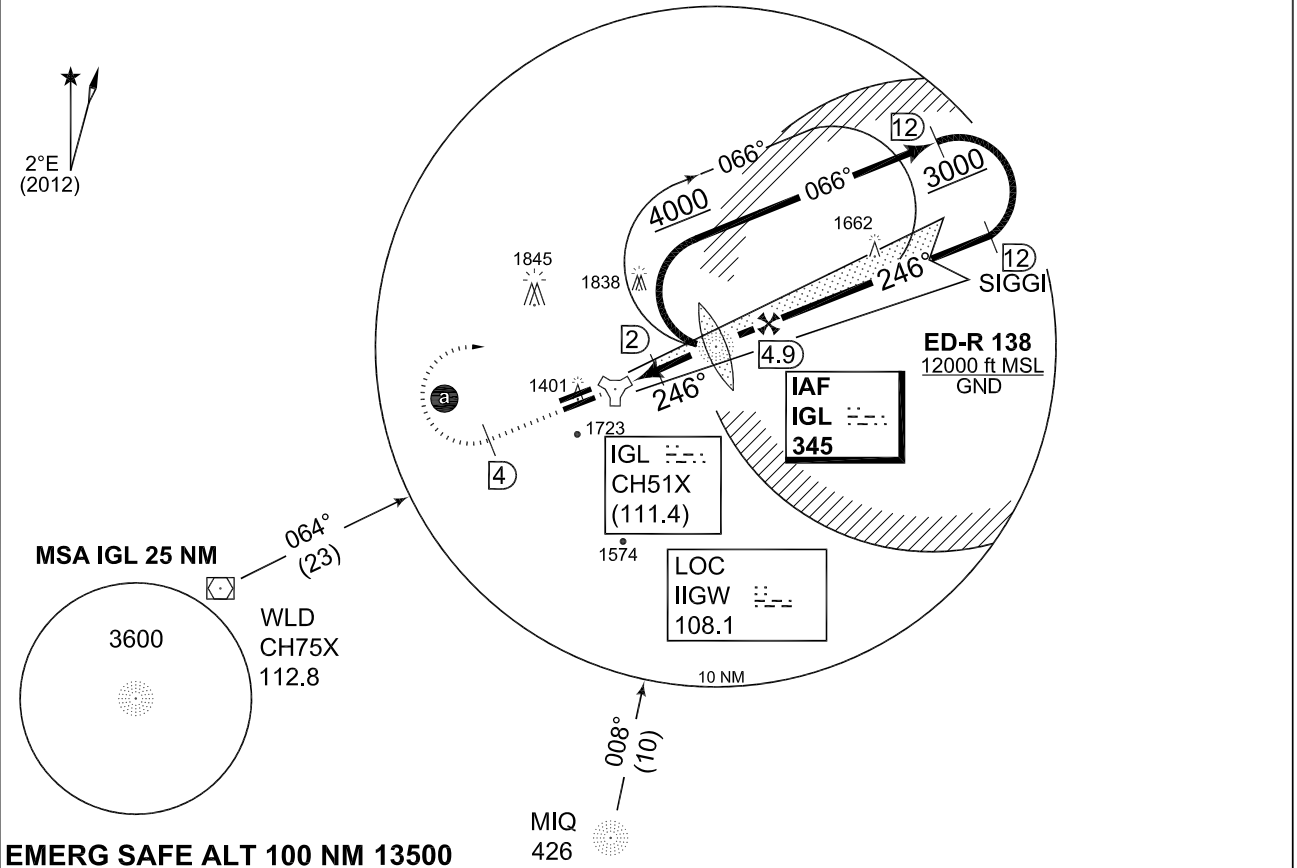
MIPS INSTRUMENT APPROACH CHART **ILS Y or LOC RWY 25L INGOLSTADT/MANCHING (ETSI)**
 AD ELEV 1203

MUENCHEN RADAR 242.200	INGO RADAR 278.100 120.600 125.575	INGO TWR 373.200 125.250	
NDB/TACAN/LOCALIZER IGL 345/IGL CH51X/IIGW 108.1	APP COURSE 246°	GS INTCP ALT 3000	GS 3.0°/5.2%
	DA see CAT	TDZE 1197	ALS-Length 900 M
		LDA 9646	

NOTE:

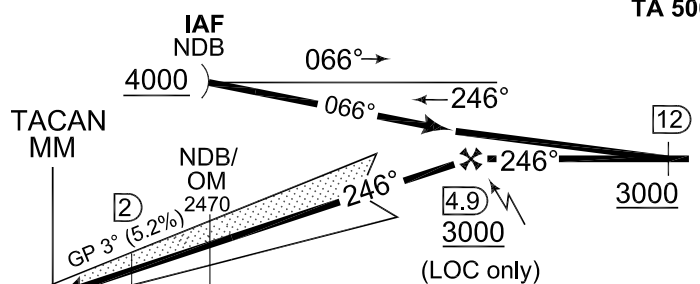
- a) MISSED APCH TURN LIMITED TO KIAS 210.
- b) CIRCLING NOT AUTHORIZED N OF RWY 07L/25R.
 CAT B: CIRCLING SPEED LIMITED TO 130 KIAS MAXIMUM.
- c) BASE TURN MAX KIAS 210.
- d) DME REQUIRED

IAF
 48°44.26'N
 011°38.67'E



EMERG SAFE ALT 100 NM 13500

- a) MISSED APPROACH**
 Climb on IGL NDB track 246° to altitude 4000ft. When passing IGL TACAN 4DME turn right inbound IGL NDB.



TCH 56	LOC: FAF - MAPt 4.9 NM				
Knots	60	90	120	150	180
Min:Sec	4:54	3:17	2:27	1:58	1:38

TDZE 1197	0.6	4.9	CAT II/III
-----------	-----	-----	------------

CATEGORY	A	B	C	D	E
ILS 25L	1397 - 0.8/550 200 (200-0.8/1.2)				1401 - 0.8/550 204 (200-0.8/1.2)
LOC 25L	1550 - 0.8 353 (400-0.8/1.6)	1550 - 0.8 353 (400-1.2/1.6)		1550 - 1.2 353 (400-1.2/2.0)	
b) CIRCLING	1700 - 1.6 497 (500-1.6)	1700 - 1.6 497 (500-1.6)	2480 - 4.8 1277 (1300-4.8)	2630 - 4.8 1427 (1500-4.8)	2630 - 4.8 1427 (1500-4.8)

ILS Y or LOC RWY 25L **INGOLSTADT/MANCHING (ETSI)**
 48°42.94'N
 011°32.02'E