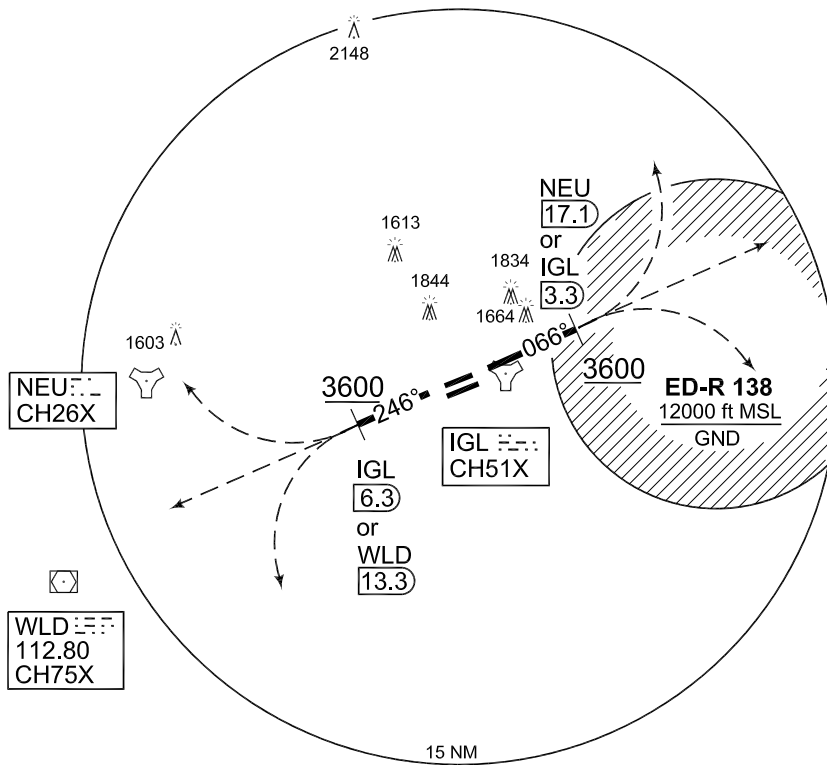
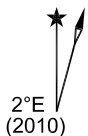


**PANS-OPS
INSTRUMENT DEPARTURE CHART**

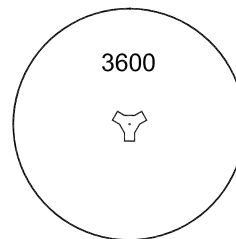
AD ELEV 1203

**SI 207 - 225
INGOLSTADT/MANCHING (ETSI)**

INGO TWR 373.200 125.250	INGO RADAR 278.100 120.600 125.575	MUENCHEN RADAR 242.200 VHF O/R						
	RWY	From - to	60	120	180	240	300	REASON
	25R	DER - 3600	608	1216	1824	2432	3040	ATC
	07L	DER - 3600	608	1216	1824	2432	3040	ATC



MSA IGL 25 NM



EMERG SAFE ALT 100 NM 13500

TA 5000

SI 225 (RWY 25R)	- Climb on track 246° to IGL/6.3 DME or WLD/13.3 DME - Cross IGL/6.3 DME or WLD/13.3 DME at 3600 ft or above - Continue as cleared by ATC
SI 207 (RWY 07L)	- Climb on track 066° to IGL/3.3 DME or NEU/17.1 - Cross IGL/3.3 DME or NEU/17.1 at 3600 ft or above - Continue as cleared by ATC

CHANGE: EDITORIAL (278/11)

AFSBw 12 JAN 2012

SI 207 - 225

48°42.94'N
011°32.02'E

INGOLSTADT/MANCHING (ETSI)