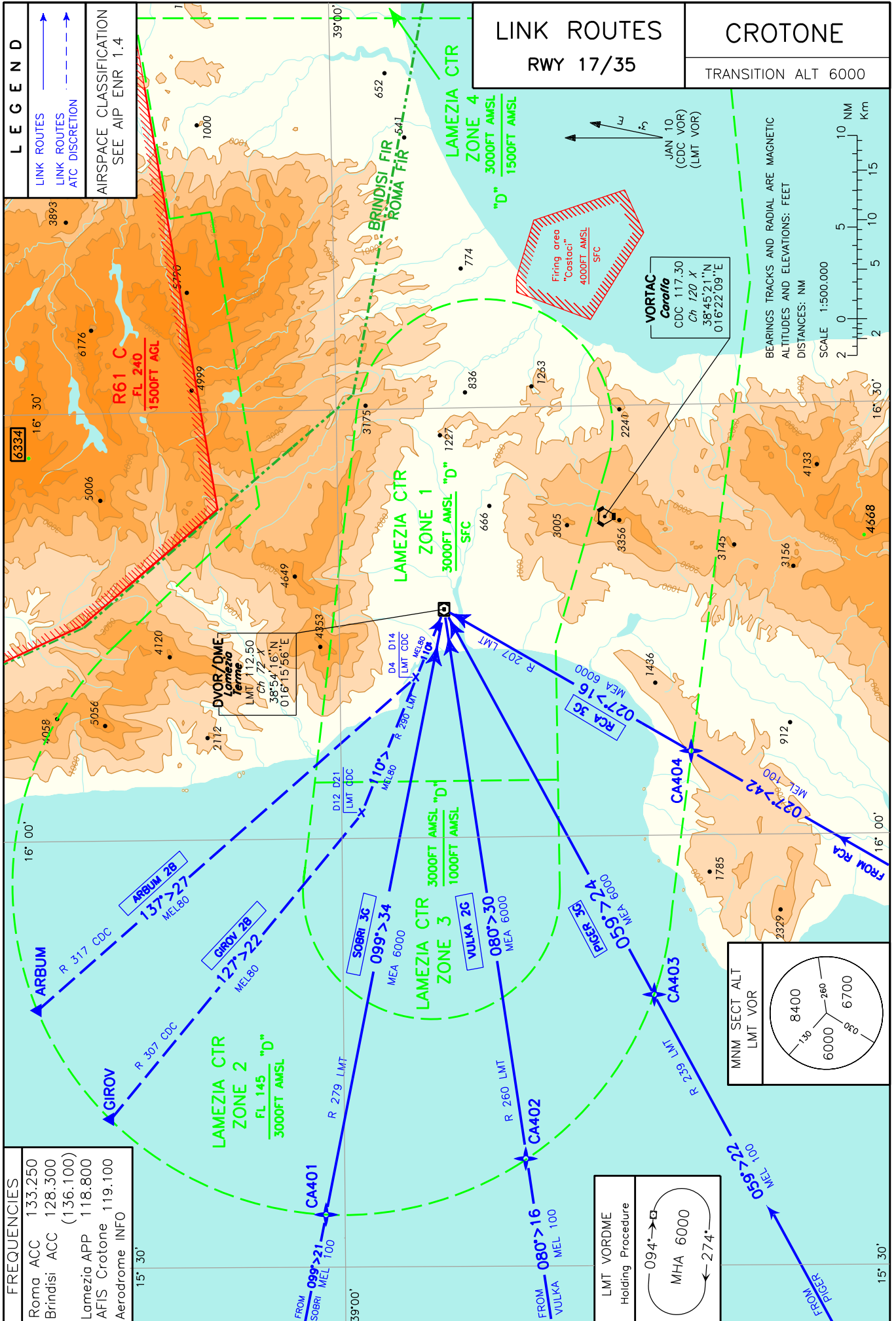


CHANGE: Brindisi ACC FREQ modified, Roma ACC FREQ added



LINK ROUTES

ARBUM 2B (a discrezione ATC)

ARBUM – TR 137° (RDL 317 CDC VOR) fino a D14 CDC TACAN (o D4 LMT DME), quindi virare a sinistra su TR 110° (RDL 290 LMT VOR) per LMT VOR.

ARBUM 2B (ATC discretion)

ARBUM – TR 137° (RDL 317 CDC VOR) until D14 CDC TACAN (or D4 LMT DME), then turn left on TR 110° (RDL 290 LMT VOR) bound to LMT VOR.

MEL: ARBUM – LMT VOR/DME: FL 80

GIROV 2B (a discrezione ATC)

GIROV – TR 127° (RDL 307 CDC VOR) fino a D21 CDC TACAN (o D12 LMT DME), quindi virare a sinistra su TR 110° (RDL 290 LMT VOR) per LMT VOR.

GIROV 2B (ATC discretion)

GIROV – TR 127° (RDL 307 CDC VOR) until D21 CDC TACAN (or D12 LMT DME), then turn left on TR 110° (RDL 290 LMT VOR) bound to LMT VOR.

MEL: GIROV – LMT VOR/DME: FL 80

RCA 3G

RCA VOR – RDL 027 RCA VOR (RDL 207 LMT VOR) – LMT VOR/DME.

RCA3G

RCA VOR – RDL 027 RCA VOR (RDL 207 LMT VOR) - LMT VOR/DME.

MEL/MEA: RCA VOR – CA404: FL 100; CA404 — LMT VOR/DME: 6000 FT

SOBRI 3G

SOBRI – RDL 279 LMT VOR (TR 099°) – LMT VOR/DME.

SOBRI 3G

SOBRI – RDL 279 LMT VOR (TR 099°) – LMT VOR/DME.

MEL/MEA: SOBRI – CA401: FL100; CA401 – LMT VOR/DME: 6000 FT

VULKA 2G

VULKA – RDL 260 LMT VOR (TR 080°) – LMT VOR/DME.

VULKA 2G

VULKA – RDL 260 LMT VOR (TR 080°) – LMT VOR/DME.

MEL/MEA: VULKA – CA402: FL100; CA402 – LMT VOR/DME: 6000 FT

PIGER 3G

PIGER – RDL 239 LMT VOR (TR 059°) – LMT VOR/DME.

PIGER 3G

PIGER – RDL 239 LMT VOR (TR 059°) – LMT VOR/DME.

MEL/MEA: PIGER – CA403: FL100; CA403 – LMT VOR/DME: 6000 FT

Waypoint	Latitude	Longitude
CA401	N39010272	E015334219
CA402	N38501508	E015372129
CA403	N38430567	E015484573
CA404	N38405185	E016054809

Intenzionalmente bianca

Intentionally left blank