

ICAO - INSTRUMENT APPROACH CHART

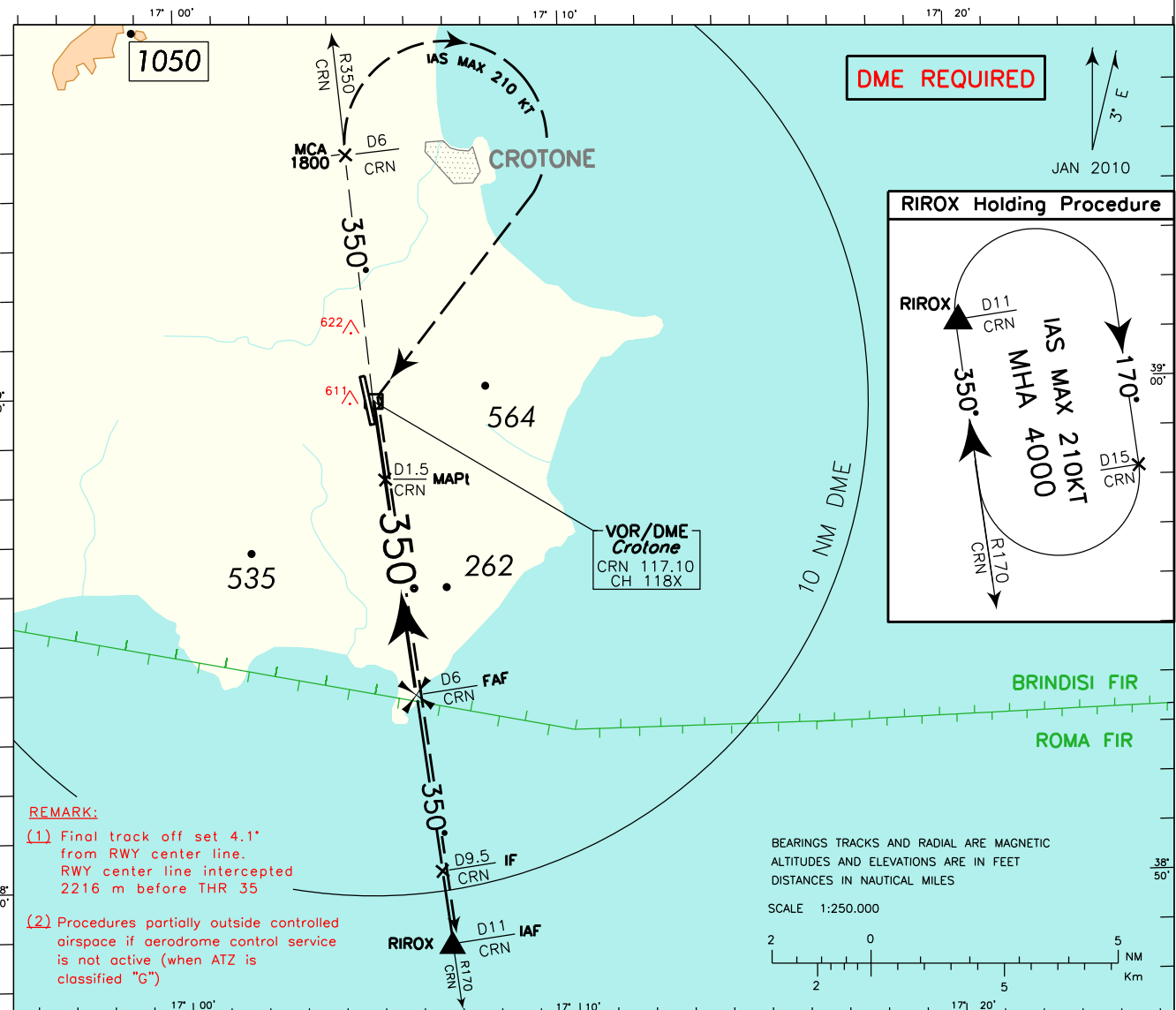
AD 2 LIBC 5-11

CHANGE: Brindisi ACC FREQ withdrawn
DOC 8168 ED. 5 - 2006 - AMDT 4

WARNING: Users of this procedure shall assure themselves in every circumstance their safety with regard to other aircraft which may operate near aerodrome.

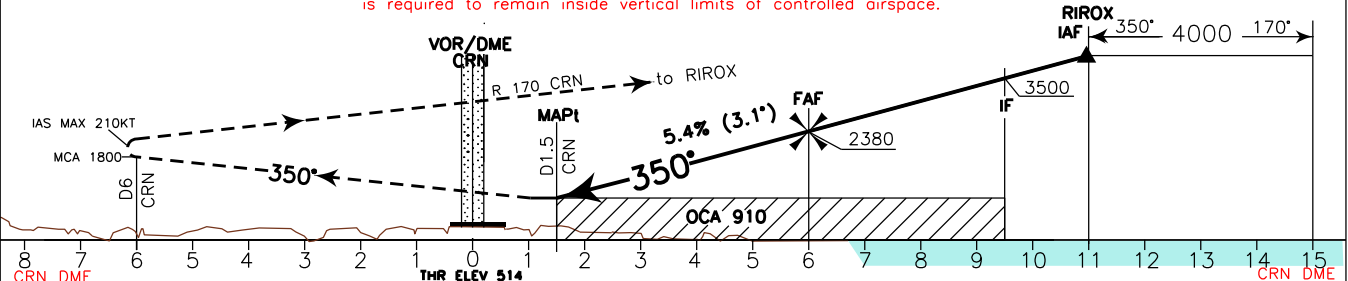
APP *Lamezia Approach* 118.800
AD ELEV 522
AFIS *Crotone Aerodrome Info* 119.100

CROTONE
VOR X RWY 35

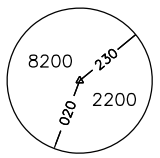


TRANSITION ALT 6000 MISSED APPROACH: At 1.5 NM CRN DME proceed on RDL 350 CRN VOR (TR 350°) climbing to 4000 ft. On RDL350/6NM CRN VOR/DME, at 1800 ft or above, turn right (IAS MAX 210 kt) to CRN VOR. Leave CRN VOR on RDL170 bound to RIXOX (RDL 170/11 NM CRN VOR/DME). Right turn holding pattern towards the station on RDL 170 CRN VOR between 11 NM and 15 NM CRN DME (IAS MAX 210 kt - MHA 4000 ft).

REMARK: Missed approach obstacles clearance is provided by 2.5% gradient. 4.0% (243ft/NM) up to reach 2000ft is required to remain inside vertical limits of controlled airspace.



OCA (OCH)		A	B	C	D	GS	FT PER MIN	FAF:MAPt	MAPt:THR	DME	ALT (HGT)	NMN SECT ALT	
STRAIGHT IN APPROACH	VOR/DME	910 (396)				80	434	3 : 23	0 : 47	6	2380(1866)	CRN	VOR
						100	543	2 : 42	0 : 38	5	2050(1536)		
						120	651	2 : 15	0 : 31	4	1720(1206)		
						140	760	1 : 56	0 : 27	3	1400(886)		
						160	868	1 : 41	0 : 24	2	1070(556)		
CIRCLING		1350(828)	1370(848)	1540 (1018)									



FIX/POINT	Coordinates (WGS84)
IAF (RIROX)	38°48'50.2" N 017°06'41.9" E
IF	38°50'19.6" N 017°06'27.9" E
FAF	38°53'48.3" N 017°05'55.2" E
MAPt	38°58'16.5" N 017°05'13.0" E