

ICAO – INSTRUMENT APPROACH CHART

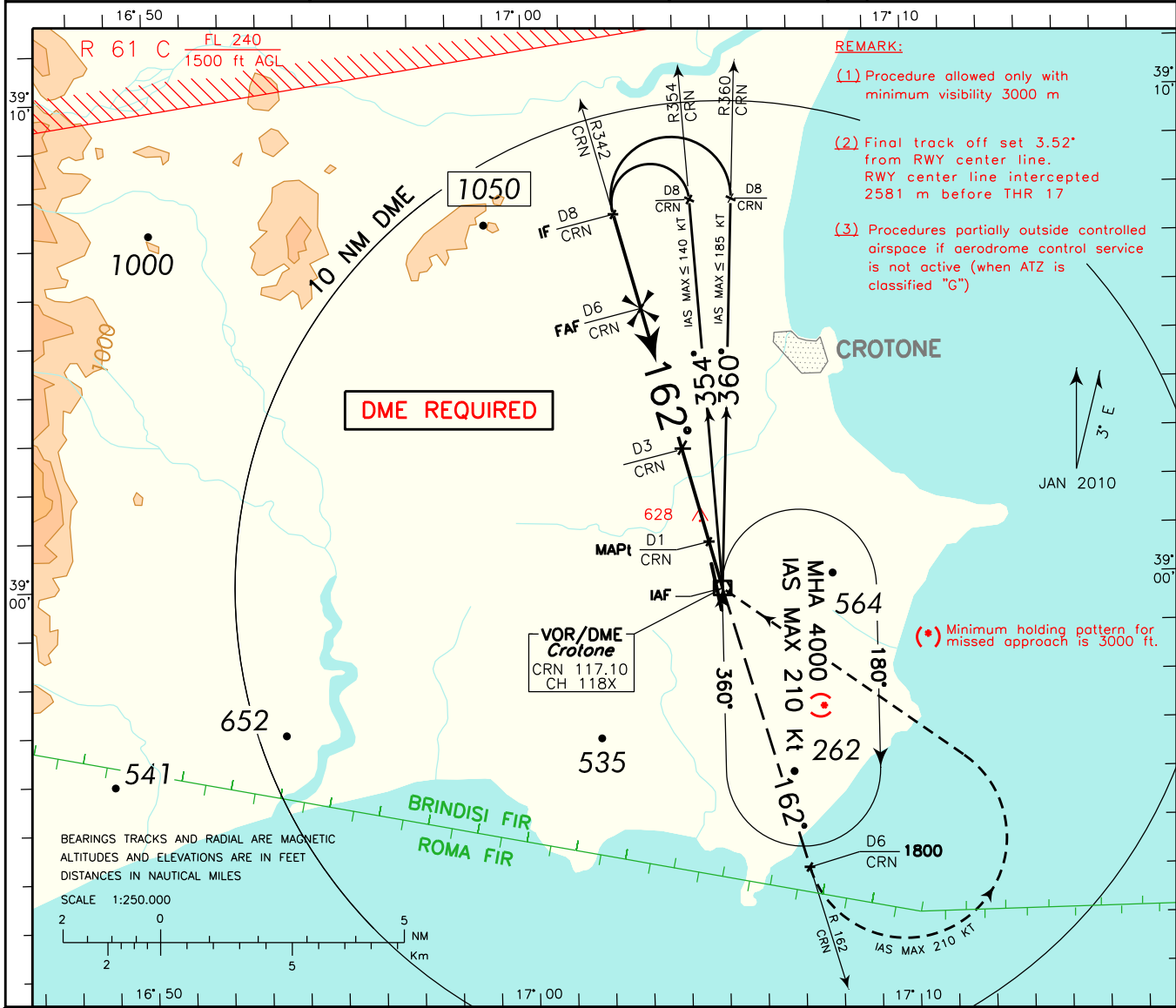
AD 2 LIBC 5-3

DOC 8168 ED.5 – 2006 – AMDT 4
CHANGE: Brindisi ACC FREQ withdrawn

WARNING : Users of this procedure shall assure themselves in every circumstance their safety with regard to other aircraft which may operate near aerodrome.

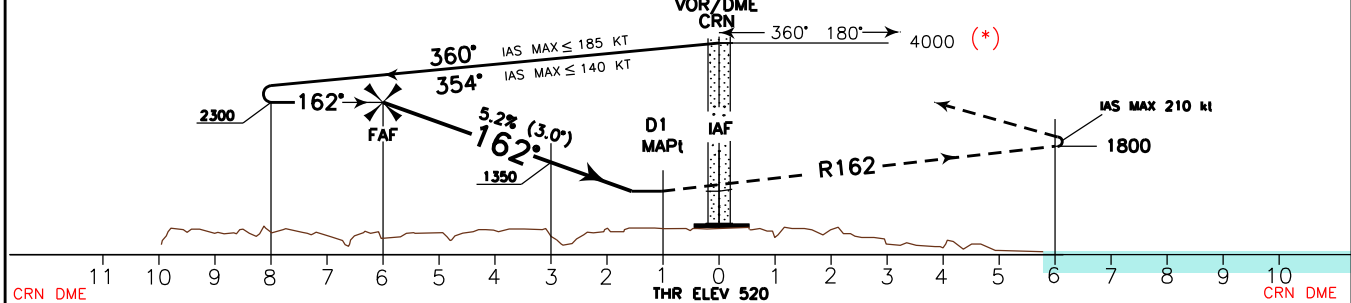
APP Lamezia Approach 118.800
AD ELEV 522
AFIS Crotone Aerodrome Info 119.100

L I B C
C R O T O N E
V O R Z R W Y 1 7



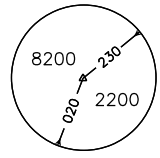
TRANSITION ALT 6000 MISSED APPROACH: At 1 NM CRN DME proceed on RDL 162 CRN VOR (TR 162°) climbing to 3000 ft. At 6 NM CRN DME at 1800 ft or above turn left (IAS MAX 210 kt) to CRN VOR holding pattern to be reached at 3000 ft.

REMARK: Missed approach obstacles clearance is provided by 2.5% gradient. 4.0% (243ft/NM) up to reach 2000ft is required to remain inside vertical limits of controlled airspace.



CRN DME 11 10 9 8 7 6 5 4 3 2 1 0 1 2 3 4 5 6 7 8 9 10 NM
THR ELEV 520

OCA (OCH)		A	B	C	D	GS	FT PER MIN	FAF : MAPt 5 NM	MAPt : THR 0.45 NM	D M E	ALT (HGT)	MNM	SECT	ALT
STRAIGHT IN APPROACH	VORDME	950 (428)				80	423	3 : 45	0 : 20	6	2300(1778)	CRN		
						100	529	3 : 00	0 : 16	5	1985(1463)		VOR	
						120	634	2 : 30	0 : 14	4	1665(1143)			
						140	740	2 : 09	0 : 12	3	1350(828)			
						160	846	1 : 53	0 : 10	2	1030(508)			
CIRCLING		1350(828)	1370(848)	1540 (1018)						1	715 (193)			



FIX/POINT	Coordinates (WGS84)
IAF (CRN VOR/DME)	38°59'46.0" N 017°04'59.0" E
IF	39°07'30.7" N 017°02'23.0" E
FAF	39°05'34.5" N 017°03'02.0" E
RDL342/3NM CRN VOR/DME	39°02'40.2" N 017°04'00.6" E
MAPt	39°00'44.0" N 017°04'39.5" E