

ICAO – INSTRUMENT APPROACH CHART

AD 2 LIBC 5-5

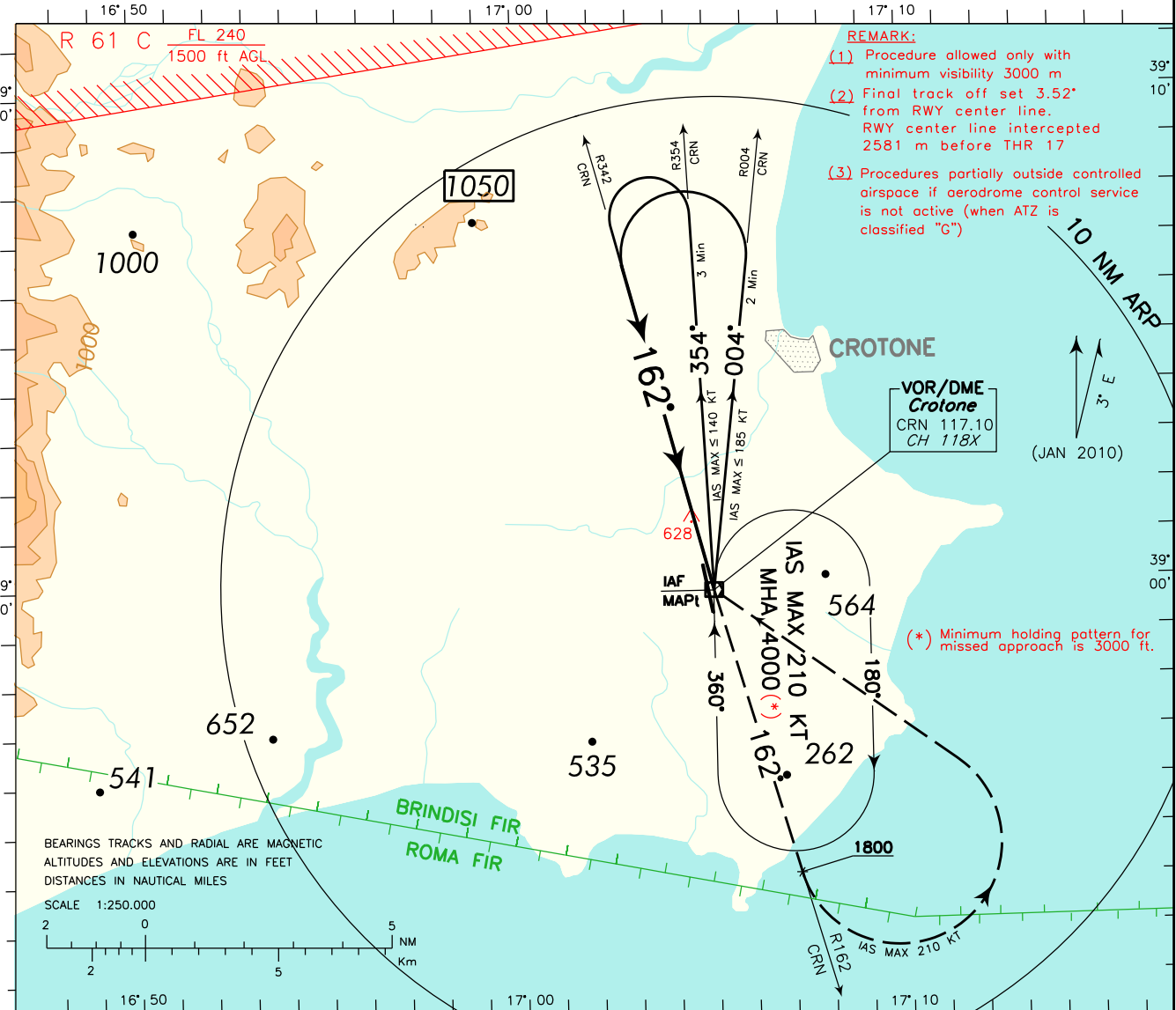
DOC 8168 ED.5 2006 – AMDT 4
CHANGE: Brindisi ACC FREQ withdrawn

WARNING : Users of this procedure shall assure themselves in every circumstance their safety with regard to other aircraft which may operate near aerodrome.

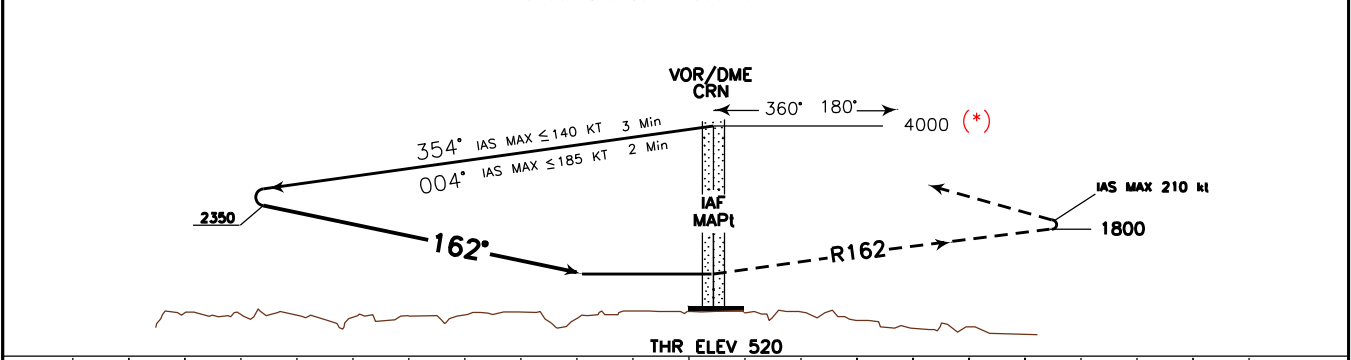
APP Lamezia Approach **118.800**
AFIS Crotona Aerodrome Info **119.100**

AD ELEV **522**
L
B
C

CROTONE
VOR-Y RWY17



TRANSITION ALT 6000 **MISSED APPROACH:** Over CRN VOR proceed on RDL 162 CRN VOR (track 162°) climbing to 3000 ft, crossing 1800 ft or above, turn left (IAS MAX 210 kt) to CRN VOR holding pattern to be reached at 3000ft.



NM		11	10	9	8	7	6	5	4	3	2	1	0	1	2	3	4	5	6	7	8	9	10	NM																																																																							
OCA (OCH)		A	B	C	D																																																																																										
STRAIGHT IN APPROACH	VOR	1300 (778)																																																																																													
						GS	FT PER MIN																																																																																								
						80	425																																																																																								
						100	531																																																																																								
						120	637																																																																																								
					140	743																																																																																									
					160	849																																																																																									
CIRCLING		1350(828)	1370(848)	1540 (1018)																																																																																											
		<table border="1"> <tr> <td colspan="2">MNM SECT ALT</td> <td colspan="22"></td> </tr> <tr> <td>CRN</td> <td>VOR</td> <td colspan="22"></td> </tr> <tr> <td colspan="2"></td> <td colspan="22"> </td> </tr> </table>																						MNM SECT ALT																								CRN	VOR																																														
MNM SECT ALT																																																																																															
CRN	VOR																																																																																														

FIX/POINT	Coordinates (WGS84)
IAF (CRN VOR/DME)	38°59'46.0" N 017°04'59.0" E
MAPt (CRN VOR/DME)	38°59'46.0" N 017°04'59.0" E