

ICAO - INSTRUMENT APPROACH CHART

AD2 LIBC 5-7

DOC 8168 ED.5 - 2006 - AMDT 4
CHANGE: Brindisi ACC FREQ withdrawn

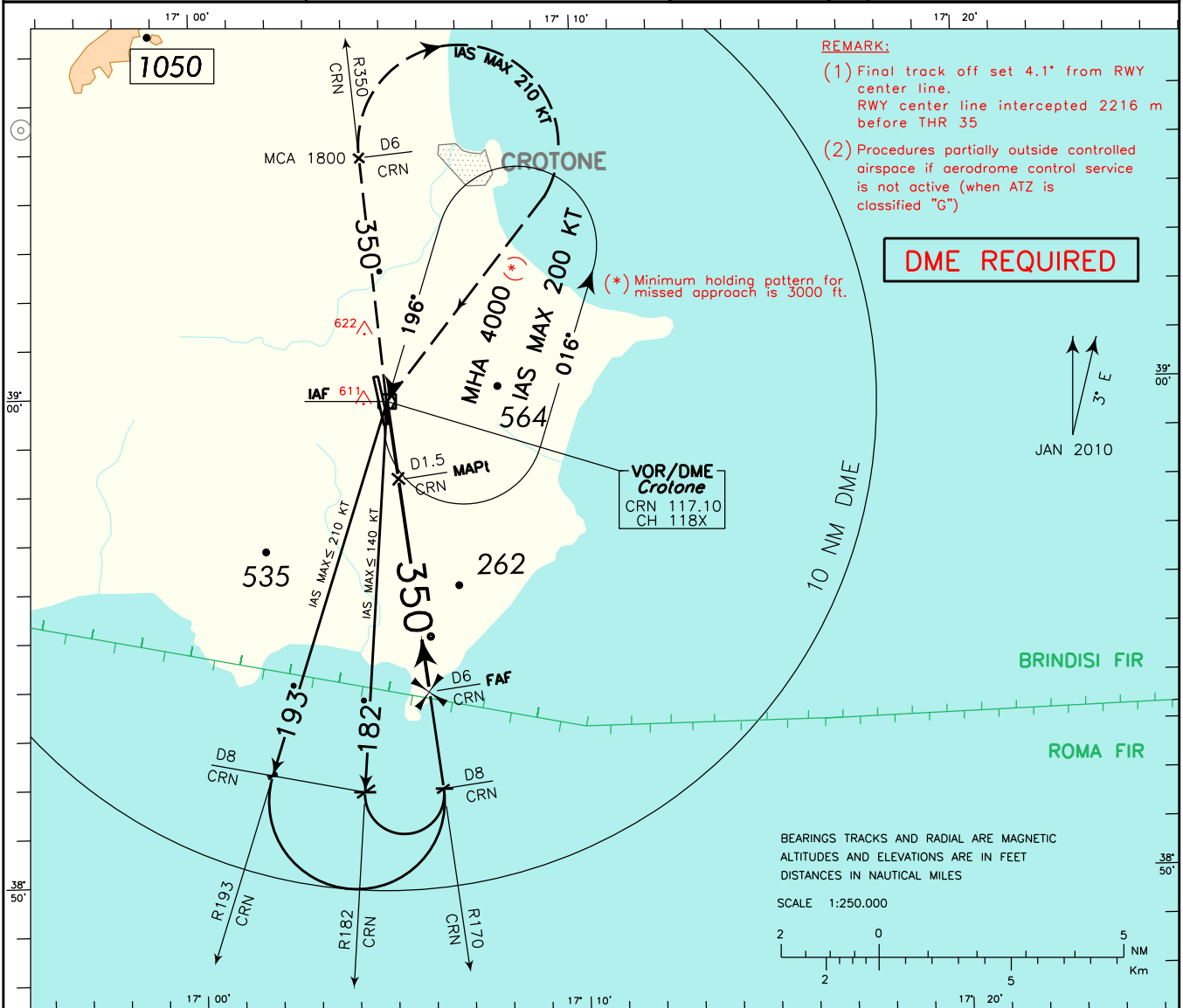
WARNING : Users of this procedure shall assure themselves in every circumstance their safety with regard to other aircraft which may operate near aerodrome.

APP Lamezia Approach 118.800
AFIS Crotone Aerodrome Info 119.100

AD ELEV
522

**L
I
B
C**

CROTONE
VOR Z RWY 35



REMARK:

- (1) Final track off set 4.1' from RWY center line. RWY center line intercepted 2216 m before THR 35
- (2) Procedures partially outside controlled airspace if aerodrome control service is not active (when ATZ is classified "G")

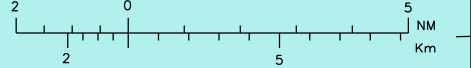
DME REQUIRED

(* Minimum holding pattern for missed approach is 3000 ft.



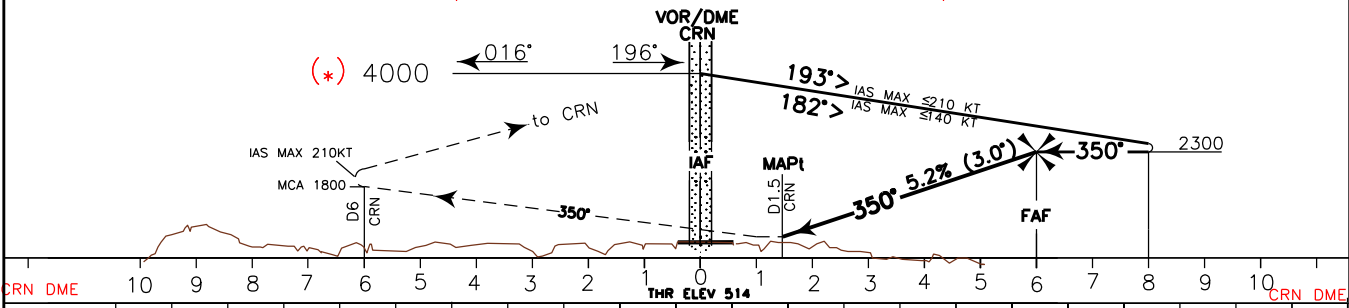
BEARINGS TRACKS AND RADIAL ARE MAGNETIC
ALTITUDES AND ELEVATIONS ARE IN FEET
DISTANCES IN NAUTICAL MILES

SCALE 1:250.000



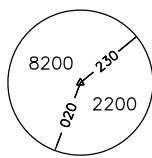
TRANSITION ALT 6000 **MISSED APPROACH:** At 1.5 NM CRN DME proceed on RDL 350 CRN VOR (TR 350°) climbing to 3000 ft. At 6 NM after CRN DME, at 1800 ft or above, turn right (IAS MAX 210kt) bound to CRN VOR holding pattern to be reached at 3000ft.

REMARK: Missed approach obstacles clearance is provided by 2.5% gradient. 4.0% (243ft/NM) up to reach 2000ft is required to remain inside vertical limits of controlled airspace.



CRN DME	10	9	8	7	6	5	4	3	2	1	0	1	2	3	4	5	6	7	8	9	10	CRN DME
---------	----	---	---	---	---	---	---	---	---	---	---	---	---	---	---	---	---	---	---	---	----	---------

OCA (OCH)		A	B	C	D	GS	FT PER MIN	FAF:MAPt 4.5 NM	MAPt:THR 1.05 NM	D M E	ALT (HGT)	MNM SECT ALT	
STRAIGHT IN APPROACH	VOR/DME	910 (396)										VOR	CRN
						80	417	3 : 23	0 : 47	6	2300(1786)		
						100	522	2 : 42	0 : 38	5	1985(1471)		
						120	626	2 : 15	0 : 31	4	1675(1161)		
						140	730	1 : 56	0 : 27	3	1360(846)		
						160	834	1 : 41	0 : 24	2	1050(536)		
CIRCLING		1350(828)	1370(848)	1540 (1018)						1	735(221)		



FIX/POINT	Coordinates (WGS84)
IAF (CRN VOR/DME)	38°59'46.0" N 017°04'59.0" E
IF	38°51'49.0" N 017°06'13.9" E
FAF	38°53'48.3" N 017°05'55.2" E
MAPt	38°58'16.5" N 017°05'13.0" E