

ICAO - INSTRUMENT APPROACH CHART

AD 2 LIBC 5-9

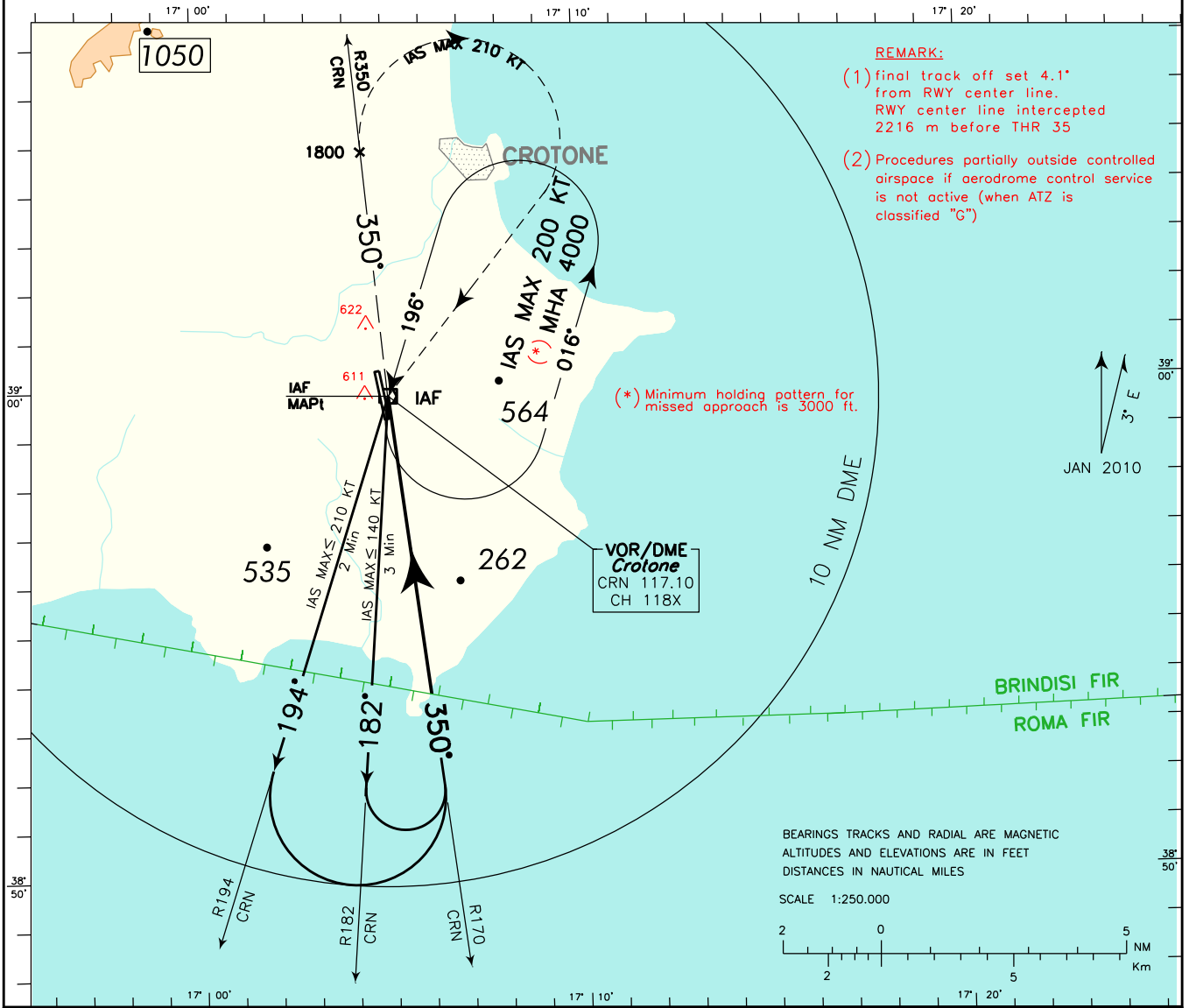
CHANGE: Brindisi ACC. FREQ. modified

WARNING : Users of this procedure shall assure themselves in every circumstance their safety with regard to other aircraft which may operate near aerodrome.

APP *Lamezia Approach* 118.800
AFIS *Crotone Aerodrome Info* 119.100

AD ELEV
522

LIBC **CROTONE**
VOR Y **RWY 35**



REMARK:
 (1) final track off set 4.1° from RWY center line. RWY center line intercepted 2216 m before THR 35
 (2) Procedures partially outside controlled airspace if aerodrome control service is not active (when ATZ is classified "G")

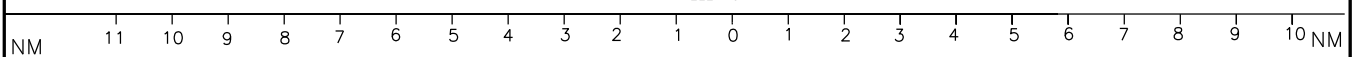
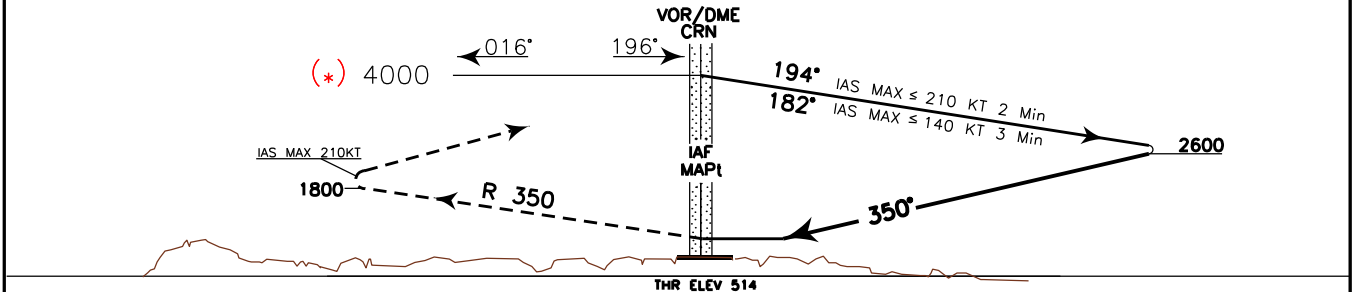
(*) Minimum holding pattern for missed approach is 3000 ft.

BEARINGS TRACKS AND RADIAL ARE MAGNETIC
 ALTITUDES AND ELEVATIONS ARE IN FEET
 DISTANCES IN NAUTICAL MILES

SCALE 1:250.000



TRANSITION ALT 6000 **MISSED APPROACH:** Over CRN VOR proceed on RDL 350 CRN VOR (track 350°) climbing to 3000 ft. Crossing 1800 ft or above turn right, with IAS MAX 210 kt, to CRN VOR holding pattern to be reached at 3000 ft.
REMARK: Missed approach obstacles clearance is provided by 2.5% gradient. 4.0% (243ft/NM) up to reach 2000ft is required to remain inside vertical limits of controlled airspace.



OCA (OCH)		A	B	C	D	GS	FT PER MIN	MNM SECT ALT
STRAIGHT IN APPROACH	VOR	950 (436)						
						100	507	
						120	608	
						140	709	
						160	811	
CIRCLING		1350(828)	1370(848)	1540 (1018)				

FIX/POINT	Coordinates (WGS84)
IAF (CRN VOR/DME)	38°59'46.0" N 017°04'59.0" E
MAPt (CRN VOR/DME)	38°59'46.0" N 017°04'59.0" E