

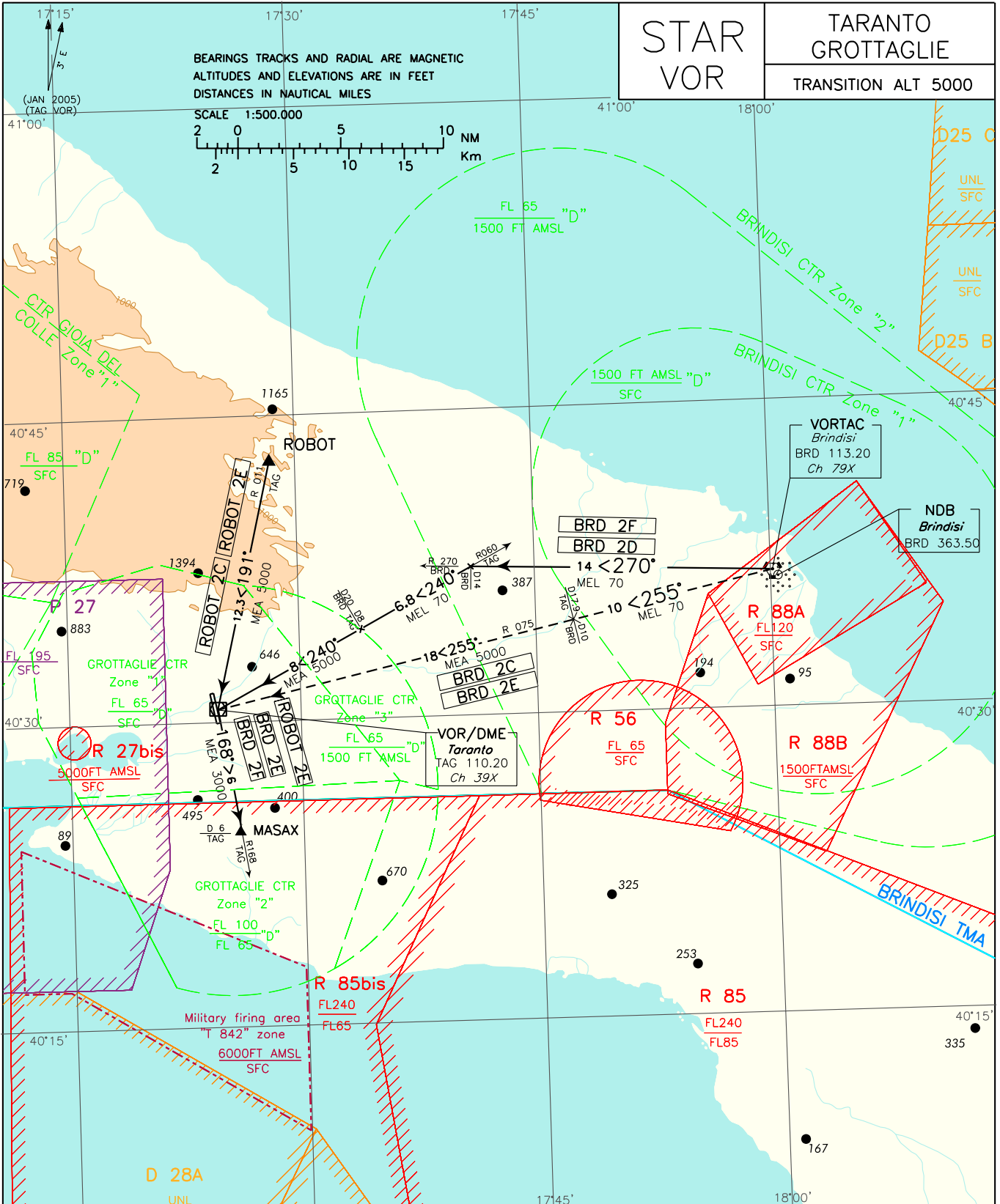
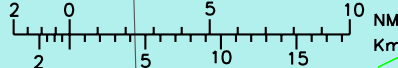
STAR
VOR

TARANTO
GROTTAGLIE

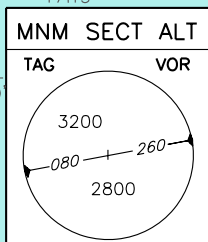
TRANSITION ALT 5000

BEARINGS TRACKS AND RADIAL ARE MAGNETIC
ALTITUDES AND ELEVATIONS ARE IN FEET
DISTANCES IN NAUTICAL MILES

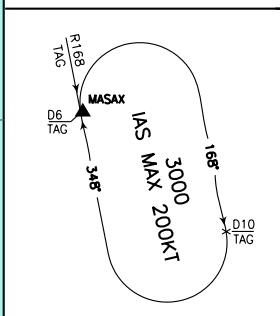
SCALE 1:500.000



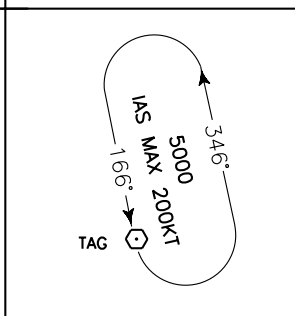
CHANGE: "MINIMUM SECTOR ALTITUDE" BOX UPDATED



MASAX HOLDING PATTERN



TAG VOR HOLDING PATTERN



FREQUENCIES

BRINDISI	ACC	128.300
GROTTAGLIE	APP	118.700
	TWR	

LEGEND

- STAR
- - - STAR ATC Discretion

BRD 2C (A discrezione ATC)

BRD VORTAC – TR 255° (RDL 255 BRD VOR o RDL 075 TAG VOR) – TAG VOR/DME.

MEL/MEA: BRD VORTAC – RDL 255/10NM BRD VORTAC (o/or RDL 075/17.9NM TAG VOR/DME): FL 70; RDL 255/10NM BRD VORTAC (o/or RDL 075/17.9NM TAG VOR/DME) – TAG VOR/DME: 5000FT

BRD 2D

BRD VORTAC – TR 270° (RDL 270 BRD VOR) fino a 14NM BRD TAC, quindi virare a sinistra fino ad intercettare e seguire RDL 060 TAG VOR (TR 240°) per TAG VOR/DME.

MEL: BRD VORTAC – RDL 060/8NM TAG VOR/DME: FL 70; RDL 060/8NM TAG VOR/DME – TAG VOR/DME: 5000 FT

BRD 2E (A discrezione ATC)

BRD VORTAC – TR 255° (RDL 255 BRD VOR o RDL 075 TAG VOR) – TAG VOR/DME, da lasciare su RDL 168 per il punto MASAX.

MEL/MEA: BRD VORTAC – RDL 255/10NM BRD VORTAC (o/or RDL 075/17.9NM TAG VOR/DME): FL 70; RDL 255/10NM BRD VORTAC (o/or RDL 075/17.9NM TAG VOR/DME) – TAG VOR/DME: 5000FT; TAG VOR/DME – MASAX: 3000 FT

BRD 2F

BRD VORTAC – TR 270° (RDL 270 BRD VOR) fino a 14NM BRD TAC, quindi virare a sinistra fino ad intercettare e seguire RDL 060 TAG VOR (TR 240°) per TAG VOR/DME, da lasciare su RDL 168 per il punto MASAX.

MEL: BRD VORTAC – RDL 060/8NM TAG VOR/DME: FL 70; RDL 060/8NM TAG VOR/DME – TAG VOR/DME: 5000 FT; TAG VOR/DME – MASAX: 3000 FT

ROBOT 2C

ROBOT – TR 191° (RDL 011 TAG VOR) – TAG VOR/DME.

MEA: ROBOT – TAG VOR/DME:5000FT

ROBOT 2E

ROBOT – TR 191° (RDL 011 TAG VOR) – TAG VOR/DME, da lasciare su RDL 168 per il punto MASAX.

MEA: ROBOT – TAG VOR/DME: 5000FT; TAG VOR/DME – MASAX: 3000 FT

BRD 2C (ATC discretion)

BRD VORTAC – TR 255° (RDL 255 BRD VOR or RDL 075 TAG VOR) – TAG VOR/DME.

BRD 2D

BRD VORTAC – TR 270° (RDL 270 BRD VOR) until 14NM BRD TAC, then turn left until joining RDL 060 TAG VOR (TR 240°) bound to TAG VOR/DME.

BRD 2E (ATC discretion)

BRD VORTAC – TR 255° (RDL 255 BRD VOR or RDL 075 TAG VOR) – TAG VOR/DME, to be left on RDL 168 bound to MASAX.

BRD 2F

BRD VORTAC – TR 270° (RDL 270 BRD VOR) until 14NM BRD TAC, then turn left until joining RDL 060 TAG VOR (TR 240°) bound to TAG VOR/DME, to be left on RDL 168 bound to MASAX.

ROBOT 2C

ROBOT – TR 191° (RDL 011 TAG VOR) – TAG VOR/DME.

ROBOT 2E

ROBOT – TR 191° (RDL 011 TAG VOR) – TAG VOR/DME to be left on RDL 168 bound to MASAX.

Intenzionalmente bianca

Intentionally left blank