

ICAO - INSTRUMENT APPROACH CHART

AD 2 LIBG 5-13

REMARK:

Final track off set 1°52' from RWY centreline.
RWY centreline intercepted 5184 m before THR 35

APP Grottaglie Approach 118.700
TWR Grottaglie Tower 118.700

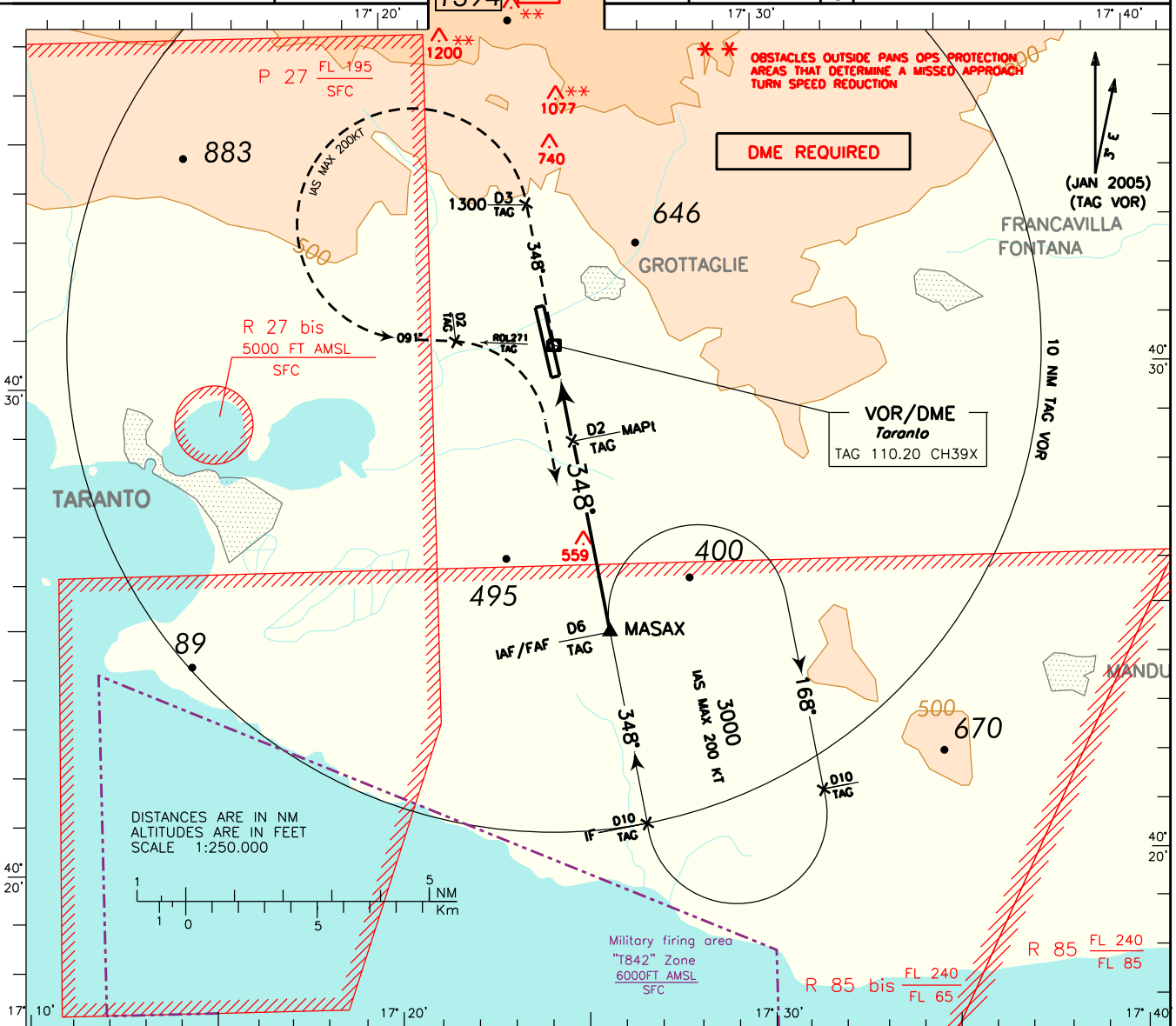
AD ELEV 214

LIBG

TARANTO/GROTTAGLIE
VOR Y RWY 35
(ATC discretion)

DOC.8168-ED.5-2006 AMDT 4

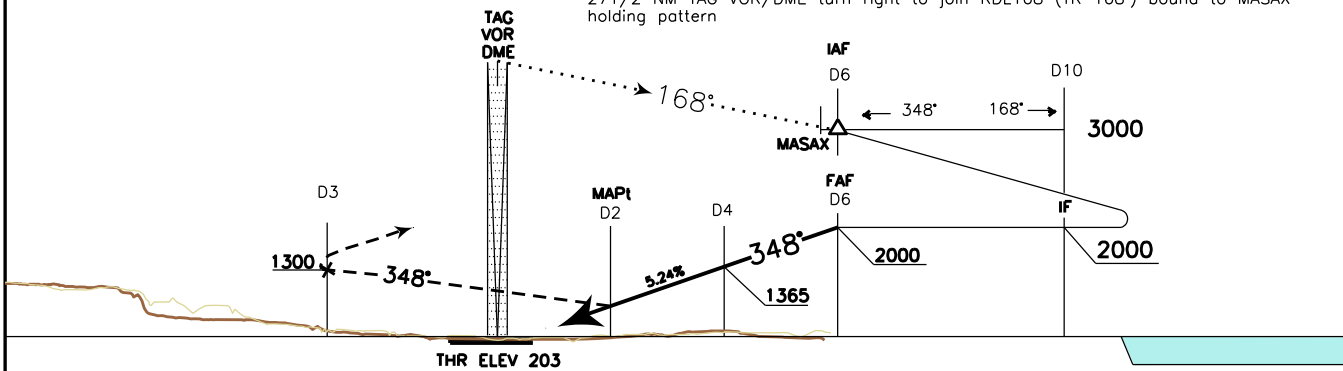
CHANGE: UPDATED CHART



TRANSITION ALT 5000

MISSED APPROACH:

At D2 TAG DME proceed on track 348°. Climbing to 3000 ft. At D3 TAG at 1300 ft or above turn left (IAS MAX 200 KT) to join RDL 271 TAG VOR (TR091°). On RDL 271/2 NM TAG VOR/DME turn right to join RDL168 (TR 168°) bound to MASAX holding pattern



TAG DME					TAG DME														
NM					NM														
STRAIGHT IN APPROACH	OCA (OCH)	A	B	C	D	CIRCLING 	GS	FT PER MIN	FAF-MAPI		MAPI-THR	TAG DME	ALT (HGT)		MNM SECT ALT TAG VOR				
	VOR	800 (597)							4 NM	1.4 NM	6	2000(1797)							
	WARNING: PAPI mandatory for circling to RWY 17																		
	CIRCLING		1000 (786)		1300 (1086)				80	425	03 : 00	01 : 03	5	1680(1477)					
									100	531	02 : 24	00 : 50	4	1365(1162)					
						120	637	02 : 00	00 : 42	3	1045(842)								
						140	743	01 : 43	00 : 36	2	730(527)								
						160	849	01 : 20	00 : 32	1	410(207)								