

ICAO - INSTRUMENT APPROACH CHART

AD 2 LIBG 5-7

DOC.8168-ED.5-2006 AMDT 4

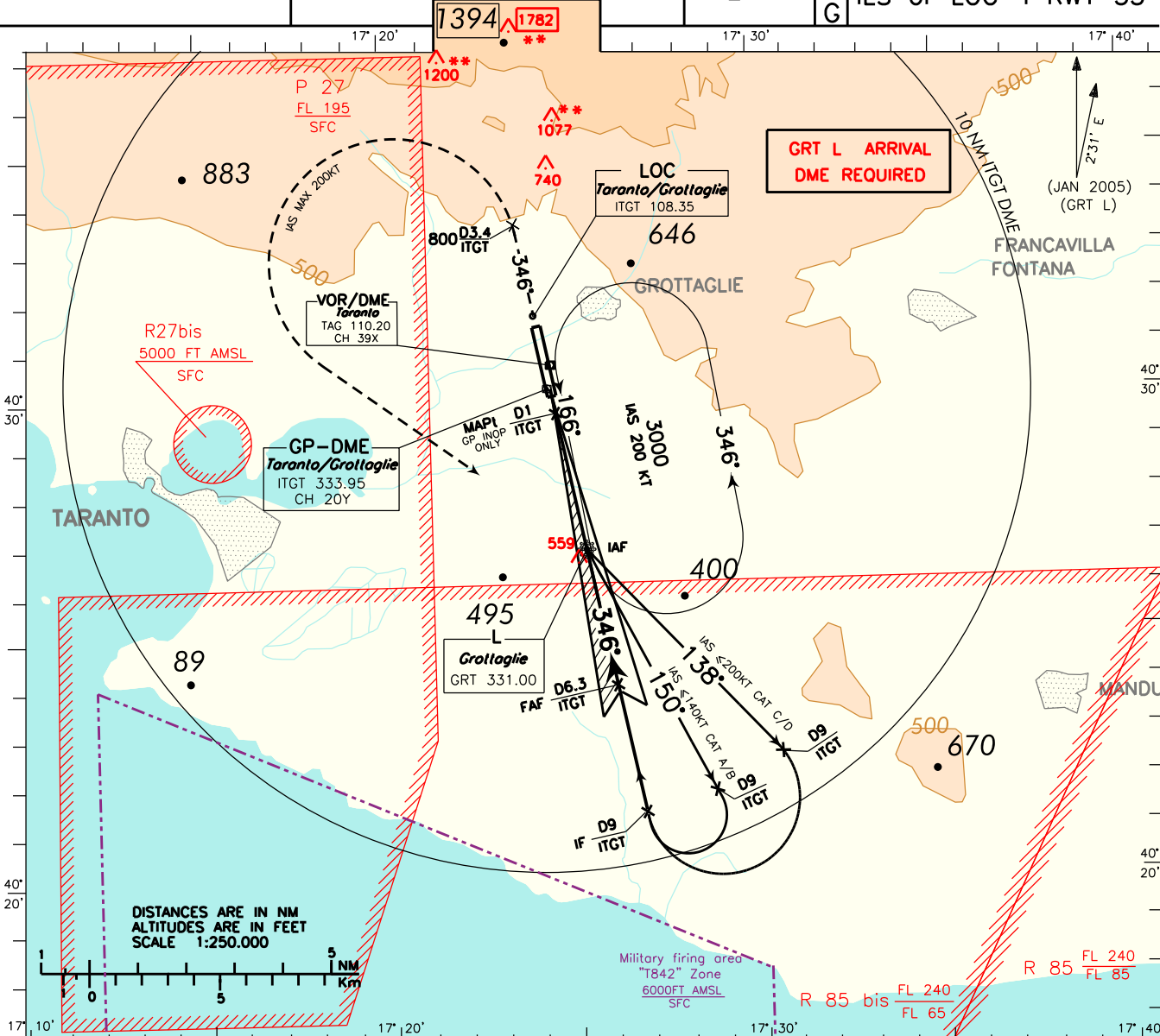
*** ***
OBSTACLES OUTSIDE PANS OPS PROTECTION AREAS THAT DETERMINE A MISSED APPROACH TURN SPEED REDUCTION

APP *Grottaglie Approach* 118.700
 TWR *Grottaglie Tower* 118.700

AD ELEV
 214

LIBG

TARANTO/GROTTAGLIE
 ILS or LOC-Y RWY 35

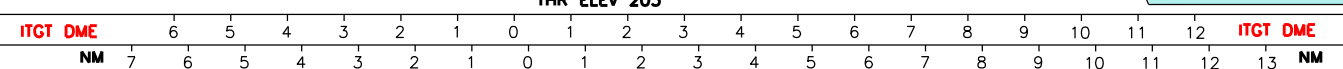
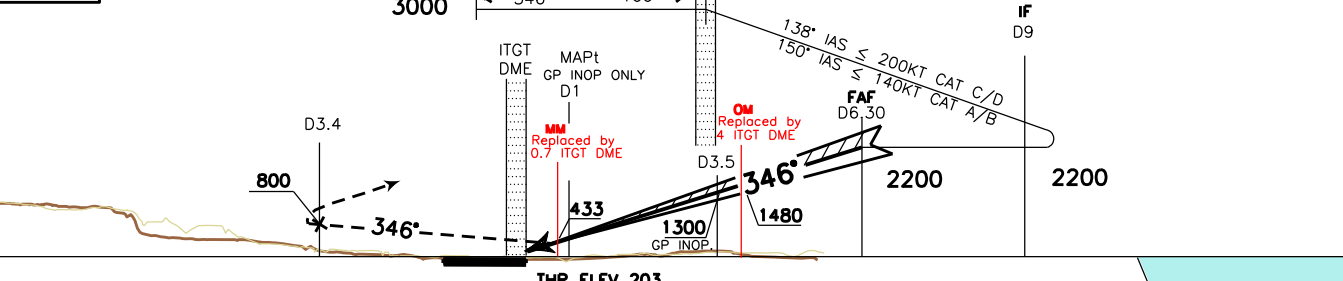


CHANGE: UPDATED CHART

DISTANCES ARE IN NM
 ALTITUDES ARE IN FEET
 SCALE 1:250.000

TRANSITION ALT 5000 MISSED APPROACH: Proceed on track 346° climbing to 3000 ft. At 3.4NM ITGT DME, at 800 ft or above, turn left (IAS MAX 200 kt) to GRT L to be reached at 3000 ft. (hold with IAS MAX 200 kt)

RDH 17.5 M
GP 3'



| STRAIGHT IN APPROACH | OCA (OCH) | | | | CIRCLING | GS | FT PER MIN | D3.5-MAPt 2.5 NM | MAPt-THR 0.8 NM | ITGT DME | ALT (HGT) | MNM SECT ALT |
|--|------------|----------|-------------|----------|----------|-----|------------|------------------|-----------------|------------|------------|--------------|
| | A | B | C | D | | | | | | | | |
| ILS | 390 (187) | 400(197) | 410(207) | 421(218) | | 80 | 425 | 01 : 53 | 00 : 37 | 6 | 2116(1913) | |
| | GP INOP | 610(407) | | | | 100 | 531 | 01 : 30 | 00 : 30 | 5 | 1798(1595) | |
| WARNING: PAPI mandatory for circling to RWY 17 | | | | 120 | | 637 | 01 : 15 | 00 : 25 | 4 | 1479(1276) | | |
| | | | | 140 | | 743 | 01 : 04 | 00 : 21 | 3 | 1161(958) | | |
| CIRCLING | 1000 (786) | | 1300 (1086) | | | 160 | 849 | 01 : 56 | 00 : 19 | 2 | 842(639) | |
| | | | | | | | | | 1 | 523(320) | | |