

ICAO - INSTRUMENT APPROACH CHART

AD 2 LIBG 5-9

 OBSTACLES OUTSIDE PANS OPS PROTECTION
 AREAS THAT DETERMINE A MISSED APPROACH
 TURN SPEED REDUCTION

APP *Grottaglie Approach* 118.700
 TWR *Grottaglie Tower* 118.700

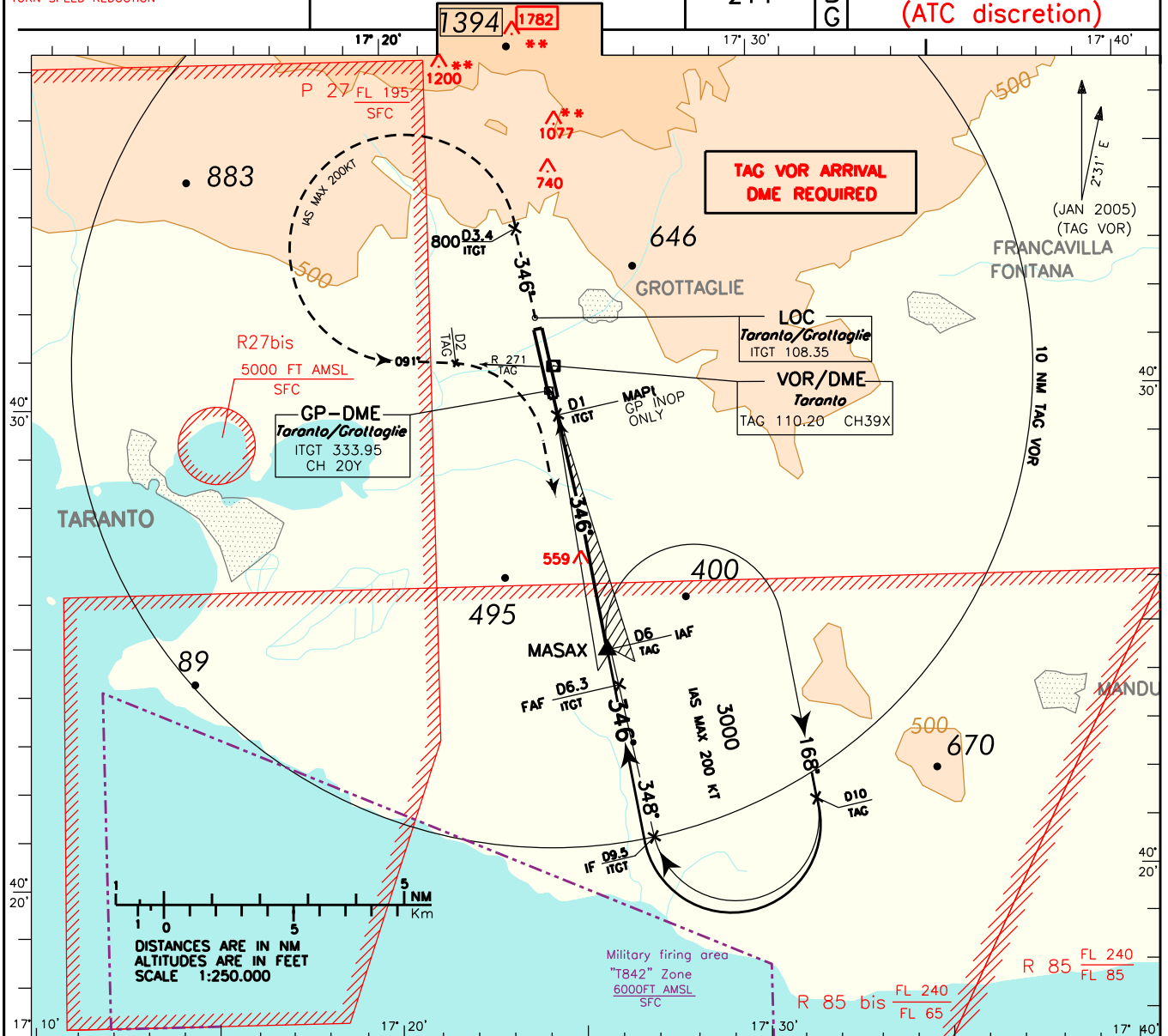
AD ELEV
 214

L
 I
 B
 G

TARANTO/GROTTAGLIE
 ILS or LOC-X RWY 35
 (ATC discretion)

DOC.8168-ED.5-2006 AMDT.4

CHANGE: UPDATED CHART

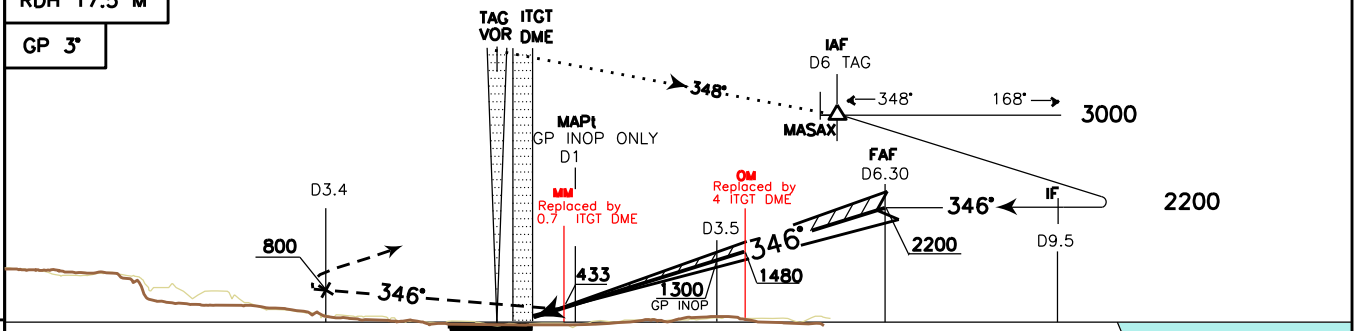


TRANSITION ALT 5000

MISSED APPROACH: Proceed on track 346° climbing to 3000 ft. At D3.4 ITGT, at 800 ft or above, turn left (IAS MAX 200KT) to join RDL 271 TAG VOR (TR 091°). On RDL 271/D2 TAG VOR/DME turn right to join RDL 168 (TR 168°) bound to MASAX holding pattern

RDH 17.5 M

GP 3°



ITGT DME	7	6	5	4	3	2	1	0	1	2	3	4	5	6	7	8	9	10	11	12	ITGT DME
	NM																				NM

STRAIGHT IN APPROACH	OCA (OCH)				CIRCLING	GS	FT FOR MIN	D3.5-MAPt 2.5 NM	MAPt-THR 0.8 NM	ITGT DME	ALT (HGT)	MNM SECT ALT						
	ILS	A	B	C								D	TAG	VOR				
STRAIGHT IN APPROACH	ILS	390 (187)	400 (197)	410 (207)	421 (218)	80	425	01 : 53	00 : 37	6	2116 (1913)							
	GP INOP.	610 (407)				100	531	01 : 30	00 : 30	5	1798 (1595)							
CIRCLING	WARNING: PAPI mandatory for circling to RWY 17												120	637	01 : 15	00 : 25	4	1479 (1276)
	1000 (786)		1300 (1086)		140	743	01 : 04	00 : 21	3	1161 (958)								
	1000 (786)		1300 (1086)		160	849	01 : 56	00 : 19	2	842 (639)								
				1	523 (320)													