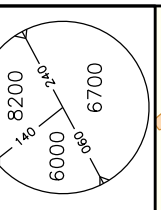


MINM SECT ALT
25 NM from CDC

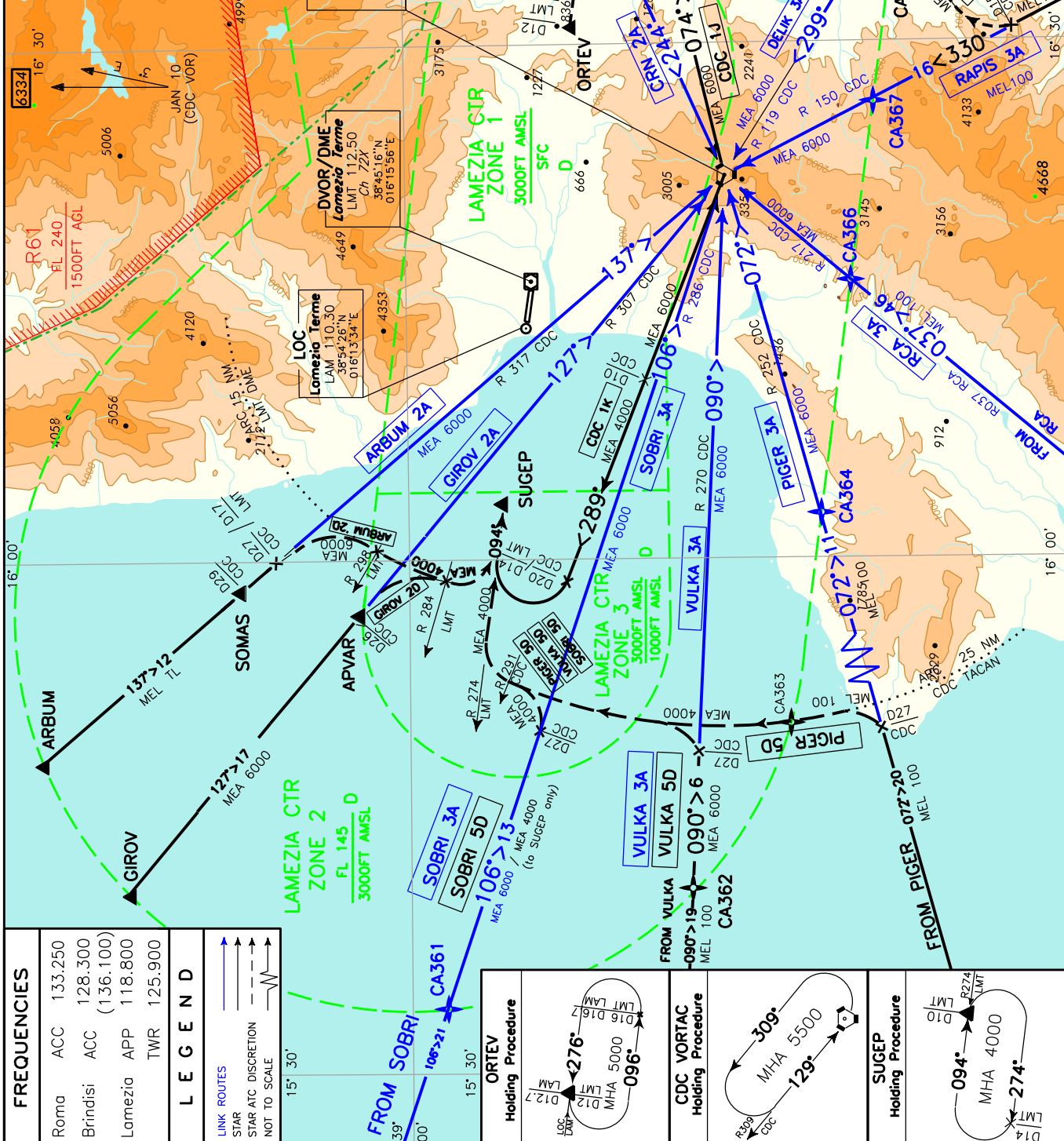
8200
6000 6700



AIRSPACE CLASSIFICATION
SEE AIP ENR 1.4

LINK ROUTES & STAR
CDC VOR

LAMEZIA TERME
TRANSITION ALT 6000



STARS

RAPIS 3B (A discrezione ATC)

RAPIS – TR 330° (RDL 150 CDC VOR) fino a 15 NM CDC TACAN, quindi virare a destra per intercettare e seguire ARC 13 NM CDC TACAN fino ad intercettare e seguire LAM LOC (TR 276°) per il punto ORTEV.

MEL/MEA: RAPIS – RDL150/15 NM CDC VORTAC: FL100; RDL150/15 NM CDC VORTAC – CA368: FL95; CA368-ORTEV: 6000 FT

RAPIS 3B (ATC discretion)

RAPIS – TR 330° (RDL 150 CDC VOR) until 15 NM CDC TACAN, then turn right to join ARC 13 NM CDC TACAN until joining LAM LOC (TR 276°) bound to ORTEV.

DELIK 3B (A discrezione ATC)

DELIK - quindi virare a destra per intercettare e seguire ARC 13 NM CDC TACAN fino ad intercettare e seguire LAM LOC (TR 276°) per il punto ORTEV.

MEL/MEA: DELIK – ORTEV: 6000 FT

DELIK 3B (ATC discretion)

DELIK – then turn right to join ARC 13 NM CDC TACAN until joining LAM LOC (TR 276°) bound to ORTEV.

CDC 1J

CDC VOR – RDL 074 CDC VOR fino a 10 NM CDC TACAN (16 NM LMT DME), quindi virare a sinistra fino ad intercettare e seguire LAM LOC (TR 276°) per il punto ORTEV.

MEA: CDC VOR – ORTEV: 6000 FT

CDC 1J

CDC VOR – RDL 074 CDC VOR until 10 NM CDC TACAN (16 NM LMT DME), then turn left until joining LAM LOC (TR 276°) bound to ORTEV.

ARBUM 2D (A discrezione ATC)

ARBUM – TR 137° (RDL 317 CDC VOR) fino a 27 NM CDC TACAN (17 NM LMT DME) quindi virare a destra per intercettare e seguire ARC 15 NM LMT DME; attraversando RDL 284 LMT VOR virare a sinistra fino ad intercettare e seguire RDL 274 LMT VOR (TR 094°) per il punto SUGEP.

MEA: ARBUM-RDL317/27 NM CDC VORTAC: TL; RDL317/27NM CDC VORTAC-INT ARC D15 LMT DME/R298 LMT VOR:6000FT; INT ARC D15 LMT DME/R298 LMT VOR-SUGEP: 4000 FT

ARBUM 2D (ATC discretion)

ARBUM – TR 137° (RDL 317 CDC VOR) until 27 NM CDC TACAN (17 NM LMT DME) then turn right to join ARC 15 NM LMT DME; crossing RDL 284 LMT VOR turn left until joining RDL 274 LMT VOR (TR 094°) bound to SUGEP.

GIROV 2D (A discrezione ATC)

GIROV – TR 127° (RDL 307 CDC VOR) - APVAR quindi virare a destra per intercettare e seguire l'ARCO 15 NM LMT DME; attraversando RDL 284 LMT VOR virare a sinistra per intercettare e seguire RDL 274 LMT VOR (TR 094°) per il punto SUGEP.

MEA: GIROV-APVAR: 6000FT; APVAR – SUGEP: 4000 FT

GIROV 2D (ATC discretion)

GIROV – TR 127° (RDL 307 CDC VOR) - APVAR then turn right to join ARC 15 NM LMT DME; crossing RDL 284 LMT VOR turn left until joining RDL 274 LMT VOR (TR 094°) bound to SUGEP.

SOBRI 5D (A discrezione ATC)

SOBRI – TR 106° (RDL 286 CDC VOR) fino a 27 NM CDC TACAN quindi virare a sinistra per intercettare e seguire l'ARCO 25 NM CDC TACAN; attraversando RDL 291 CDC VOR virare a destra per intercettare e seguire RDL 274 LMT VOR (TR 094°) per il punto SUGEP.

MEL/MEA: SOBRI – CA361: FL100; CA361 – SUGEP: 4000 FT

SOBRI 5D (ATC discretion)

SOBRI – TR 106° (RDL 286 CDC VOR) until 27 NM CDC TACAN then turn left to join ARC 25 NM CDC TACAN; crossing RDL 291 CDC VOR turn right until joining RDL 274 LMT VOR (TR 094°) bound to SUGEP.

VULKA 5D (A discrezione ATC)

VULKA – TR 090° (RDL 270 CDC VOR) fino a 27 NM CDC TACAN, quindi virare a sinistra per intercettare e seguire l'ARCO 25 NM CDC TACAN; attraversando RDL 291 CDC VOR virare a destra fino ad intercettare e seguire RDL 274 LMT VOR (TR 094°) per il punto SUGEP.

MEL/MEA: VULKA – CA362:FL 100; CA362-RDL270/27 NM CDC VORTAC: 6000FT; RDL270/27 NM CDC VORTAC – SUGEP: 4000 FT

VULKA 5D (ATC discretion)

VULKA – TR 090° (RDL 270 CDC VOR) until 27 NM CDC TACAN, then turn left to join ARC 25 NM CDC TACAN; crossing RDL 291 CDC VOR turn right until joining RDL 274 LMT VOR (TR 094°) bound to SUGEP.

PIGER 5D (A discrezione ATC)

PIGER – TR 072° (RDL 252 CDC VOR) fino a 27 NM CDC TACAN, quindi virare a sinistra per intercettare e seguire l'ARCO 25 NM CDC TACAN; attraversando RDL 291 CDC VOR virare a destra fino ad intercettare e seguire RDL 274 LMT VOR (TR 094°) per il punto SUGEP.

MEL/MEA: PIGER – CA363: FL100; CA363–SUGEP: 4000 FT

PIGER 5D (ATC discretion)

PIGER – TR 072° (RDL 252 CDC VOR) until 27 NM CDC TACAN, then turn left to join ARC 25 NM CDC TACAN; crossing RDL 291 CDC VOR turn right until joining RDL 274 LMT VOR (TR 094°) bound to SUGEP.

CDC 1K

CDC VORTAC – RDL 289 CDC VOR fino a 20 NM CDC TACAN (14 NM LMT DME), quindi virare a destra fino ad intercettare e seguire RDL 274 LMT VOR (TR 094°) per il punto SUGEP.

MEA: CDC VORTAC – 10 NM CDC TACAN: 6000 FT; 10 NM CDC TACAN - SUGEP: 4000 FT

CDC 1K

CDC VOR – RDL 289 CDC VOR until 20 NM CDC TACAN (14 NM LMT DME), then turn right until joining RD 274 LMT VOR (TR 094°) bound to SUGEP.

CRN 1B (A discrezione ATC)

CRN VOR – RDL 244 CRN VOR (RDL 064 CDC VOR) – CA369
quindi virare a destra per intercettare e seguire LAM LOC (TR 276°)
per il punto ORTEV.

CRN 1B (ATC discretion)

CRN VOR – RDL 244 CRN VOR (RDL 064 CDC VOR) – CA369
then turn right until joining LAM LOC (TR 276°) bound to ORTEV.

MEA: CRN VORDME – ORTEV: 6000 FT

Waypoint	Latitude	Longitude
CA361	N38581738	E015334647
CA362	N38470600	E015403912
CA363	N38424072	E015502293
CA364	N38411242	E016023567
CA366	N38394504	E016160721
CA367	N38383693	E016262958
CA368	N38373701	E016353003
CA369	N38511919	E016394541

LINK ROUTES**ARBUM 2A**

ARBUM – TR 137° (RDL 317 CDC VOR) – CDC VORTAC.

ARBUM 2A

ARBUM – TR 137° (RDL 317 CDC VOR) – CDC VORTAC.

MEA: ARBUM-D27 CDC TACAN: TL; D27 CDC TACAN – CDC VORTAC: 6000 FT

GIROV 2A

GIROV – TR 127° (RDL 307 CDC VOR) – CDC VORTAC.

GIROV 2A

GIROV – TR 127° (RDL 307 CDC VOR) – CDC VORTAC.

MEA: GIROV – CDC VORTAC: 6000 FT

SOBRI 3A

SOBRI – TR 106° (RDL 286 CDC VOR) – CDC VORTAC.

SOBRI 3A

SOBRI – TR 106° (RDL 286 CDC VOR) – CDC VORTAC.

MEL/MEA: SOBRI – CA361: FL 100; CA361-CDC VORTAC: 6000 FT

VULKA 3A

VULKA – TR 090° (RDL 270 CDC VOR) – CDC VORTAC.

VULKA 3A

VULKA – TR 090° (RDL 270 CDC VOR) – CDC VORTAC.

MEL/MEA: VULKA – CA362: FL100; CA362-CDC VORTAC: 6000 FT

PIGER 3A

PIGER – TR 072° (RDL 252 CDC VOR) – CDC VORTAC.

PIGER 3A

PIGER – TR 072° (RDL 252 CDC VOR) – CDC VORTAC.

MEL/MEA: PIGER – CA364: FL100; CA364-CDC VORTAC: 6000 FT

RCA 3A

RCA VOR – RDL 037 RCA VOR (RDL 217 CDC VOR) – CDC
VORTAC.

RCA 3A

RCA VOR – RDL 037 RCA VOR (RDL 217 CDC VOR) – CDC
VORTAC.

MEL/MEA: RCA VOR – CA366: FL100; CA366-CDC VORTAC: 6000 FT

RAPIS 3A

RAPIS – TR 330° (RDL 150 CDC VOR) – CDC VORTAC.

RAPIS 3A

RAPIS – TR 330° (RDL 150 CDC VOR) – CDC VORTAC.

MEL/MEA: RAPIS – CA367 : FL100; CA367-CDC VORTAC: 6000 FT

DELIK 3A

DELIK – TR 299° (RDL 119 CDC VOR) – CDC VORTAC.

DELIK 3A

DELIK – TR 299° (RDL 119 CDC VOR) – CDC VORTAC.

MEL/MEA: DELIK–CDC VORTAC: 6000 FT

CRN 2A

CRN VOR – RDL 244 CRN VOR (RDL 064 CDC VOR) – CDC
VORTAC.

CRN 2A

CRN VOR – RDL 244 CRN VOR (RDL 064 CDC VOR) – CDC
VORTAC.

MEL/MEA: CRN VOR–CA369: FL100; CA369-CDC VORTAC: 6000 FT