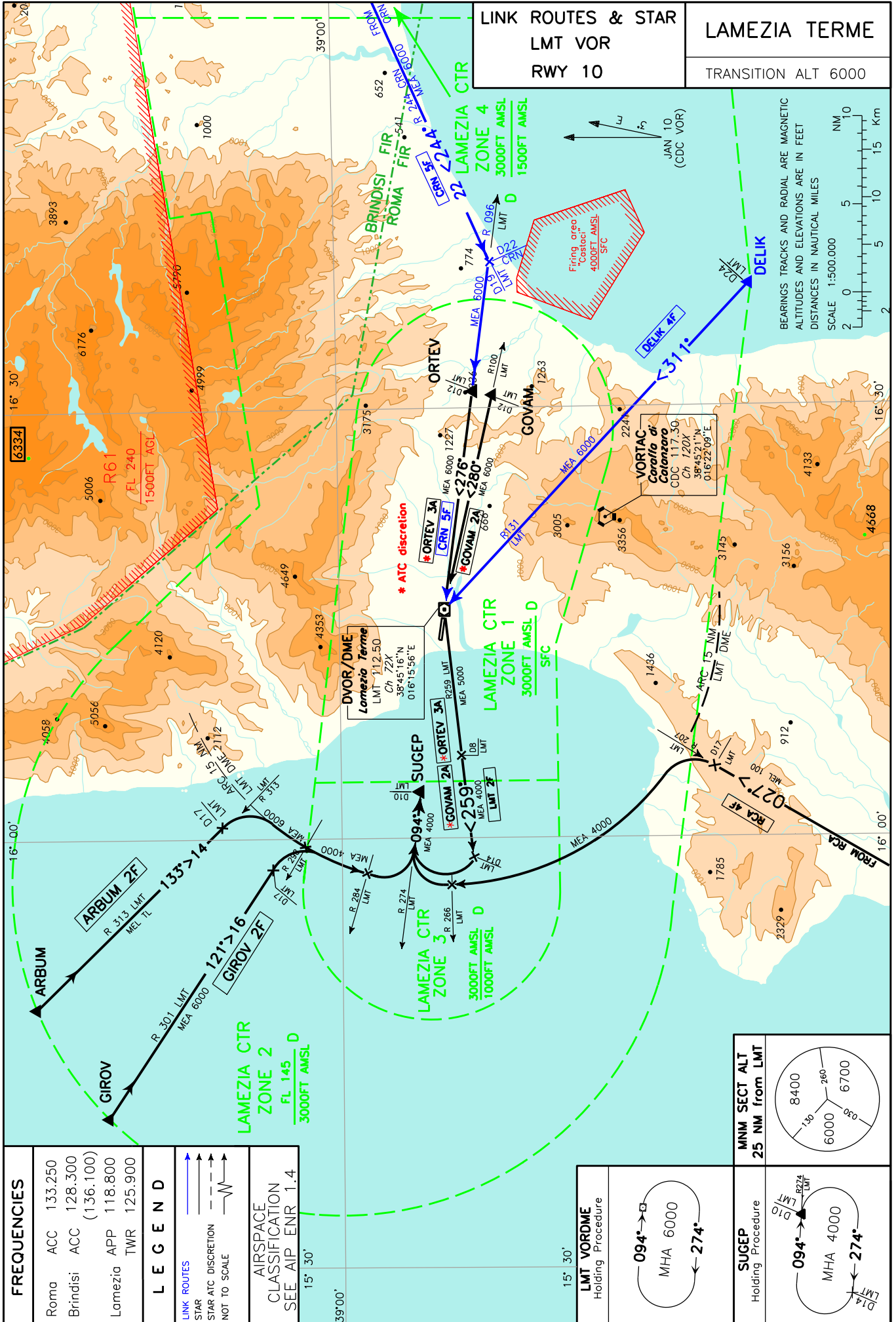


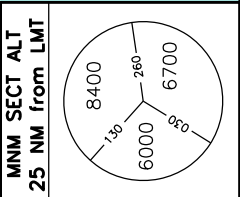
CHANGE: Brindisi ACC FREQ modified and Roma ACC FREQ added



FREQUENCIES	
Roma ACC	133.250
Brindisi ACC	128.300 (136.100)
Lamezia APP	118.800
Lamezia TWR	125.900

LEGEND	
	LINK ROUTES
	STAR ATC DISCRETION NOT TO SCALE
	AIRSPACE CLASSIFICATION SEE AIP ENR 1.4

LMT VORDME Holding Procedure	
SUGEP Holding Procedure	



STARS RWY 10**ARBUM 2F**

ARBUM – TR 133° (RDL 313 LMT VOR) fino a 17 NM LMT DME, quindi virare a destra per intercettare e seguire l'ARCO 15 NM LMT DME; attraversando RDL 284 LMT VOR virare a sinistra fino ad intercettare e seguire RDL 274 LMT VOR (TR 094°) per il punto SUGEP.

MEA: ARBUM – INT ARC 15 NM LMT DME: TL; INT ARC 15 NM LMT DME - INT ARC 15 NM LMT DME/RDL 298 LMT VOR: 6000 FT;
INT ARC 15 NM LMT DME/RDL 298 LMT VOR - SUGEP: 4000FT

GIROV 2F

GIROV – TR 121° (RDL 301 LMT VOR) fino a 17 NM LMT DME, quindi virare a destra per intercettare e seguire l'ARCO 15 NM LMT DME; attraversando RDL 284 LMT VOR virare a sinistra fino ad intercettare e seguire RDL 274 LMT VOR (TR 094°) per il punto SUGEP.

MEA: GIROV - INT ARC 15 NM LMTDME/RDL 298 LMT VOR: 6000FT; INT ARC 15 NM LMTDME/RDL 298 LMT VOR – SUGEP: 4000FT

RCA 4F

RCA VOR – TR 027° (RDL 207 LMT VOR) fino a 17 NM LMT DME quindi virare a sinistra per intercettare e seguire l'ARCO 15 NM LMT DME; attraversando RDL 266 LMT VOR virare a destra fino ad intercettare e seguire RDL 274 LMT VOR (TR 094°) per il punto SUGEP.

MEL/MEA: RCA VOR – RDL 207/17 NM LMT VORDME: FL 100; RDL 207/17 NM LMT VORDME – SUGEP 4000 FT

ORTEV 3A (a discrezione ATC - a seguito mancato avvicinamento)

ORTEV – RDL 096 LMT VOR (TR 276°) per LMT VOR da lasciare su RDL 259 fino a 14 NM LMT DME, quindi virare a destra per intercettare e seguire RDL 274 LMT VOR (TR 094°) per il punto SUGEP.

MEA: ORTEV – LMT VOR: 6000 FT; LMT VOR – RDL 259/8 NM LMT VOR/DME: 5000 FT; RDL 259/8 NM LMT VOR/DME – SUGEP: 4000 FT

GOVAM 2A (a discrezione ATC - a seguito mancato avvicinamento)

GOVAM - RDL 100 LMT VOR (TR 280°) per LMT VOR da lasciare su RDL 259 fino a 14 NM LMT DME, quindi virare a destra per intercettare e seguire RDL 274 LMT VOR (TR 094°) per il punto SUGEP.

MEA: GOVAM – LMT VOR: 6000 FT; LMT VOR – RDL 259/8 NM LMT VOR/DME: 5000 FT; RDL 259/8 NM LMT VOR/DME – SUGEP: 4000 FT

LMT 2F

LMT VORDME – RDL 259 LMT VOR fino a 14 NM LMT DME, quindi virare a destra per intercettare e seguire RDL 274 LMT VOR (TR 094°) per il punto SUGEP.

MEL/MEA: LMT VOR – RDL 259/8 NM LMT VOR/DME: 5000 FT; RDL 259/8 NM LMT VOR/DME – SUGEP: 4000 FT

ARBUM 2F

ARBUM – TR 133° (RDL 313 LMT VOR) until 17 NM LMT DME, then turn right to join ARC 15 NM LMT DME, crossing RDL 284 LMT VOR turn left until joining RDL 274 LMT VOR (TR 094°) bound to SUGEP.

GIROV 2F

GIROV – TR 121° (RDL 301 LMT VOR) until 17 NM LMT DME then turn right to join ARC 15 NM LMT DME; crossing RDL 284 LMT VOR turn left until joining RDL 274 LMT VOR (TR 094°) bound to SUGEP.

RCA 4F

RCA VOR – TR 027° (RDL 207 LMT VOR) until 17 NM LMT DME, then turn left to join ARC 15 NM LMT DME, crossing RDL 266 LMT VOR turn right until joining RDL 274 LMT VOR (TR 094°) bound to SUGEP.

ORTEV 3A (ATC discretion – following missed approach)

ORTEV – RDL 096 LMT VOR (TR 276°) to LMT VOR to be left on RDL 259 until 14 NM LMT DME, then turn right until joining RDL 274 LMT VOR (TR 094°) bound to SUGEP.

GOVAM 2A (ATC discretion – following missed approach)

GOVAM - RDL 100 LMT VOR (TR 280°) bound to LMT VOR to be left on RDL 259 until 14 NM LMT DME, then turn right to join RDL 274 LMT VOR (TR 094°) bound to SUGEP.

LMT 2F

LMT VORDME - RDL 259 LMT VOR until 14 NM LMT DME, then turn right to join RDL 274 LMT VOR (TR 094°) bound to SUGEP

LINK ROUTES RWY 10**DELIK 4F**

DELIK – TR 311° (RDL 131 LMT VOR) – LMT VORDME.

DELIK 4F

DELIK – TR 311° (RDL 131 LMT VOR) – LMT VORDME.

MEL/MEA: DELIK – LMT VORDME: 6000 FT

CRN 5F

CRN VOR – RDL 244 CRN VOR fino a 22 NM CRN DME (19 NM LMT DME), quindi virare a destra su TR 276° (RDL 096 LMT VOR) per LMT VORDME.

CRN 5F

CRN VOR – RDL 244 CRN VOR until 22 NM CRN DME (19 NM LMT DME), then turn right on TR 276° (RDL 096 LMT VOR) bound to LMT VORDME.

MEL/MEA: CRN VOR – LMT VORDME: 6000 FT

Intenzionalmente bianca

Intentionally left blank