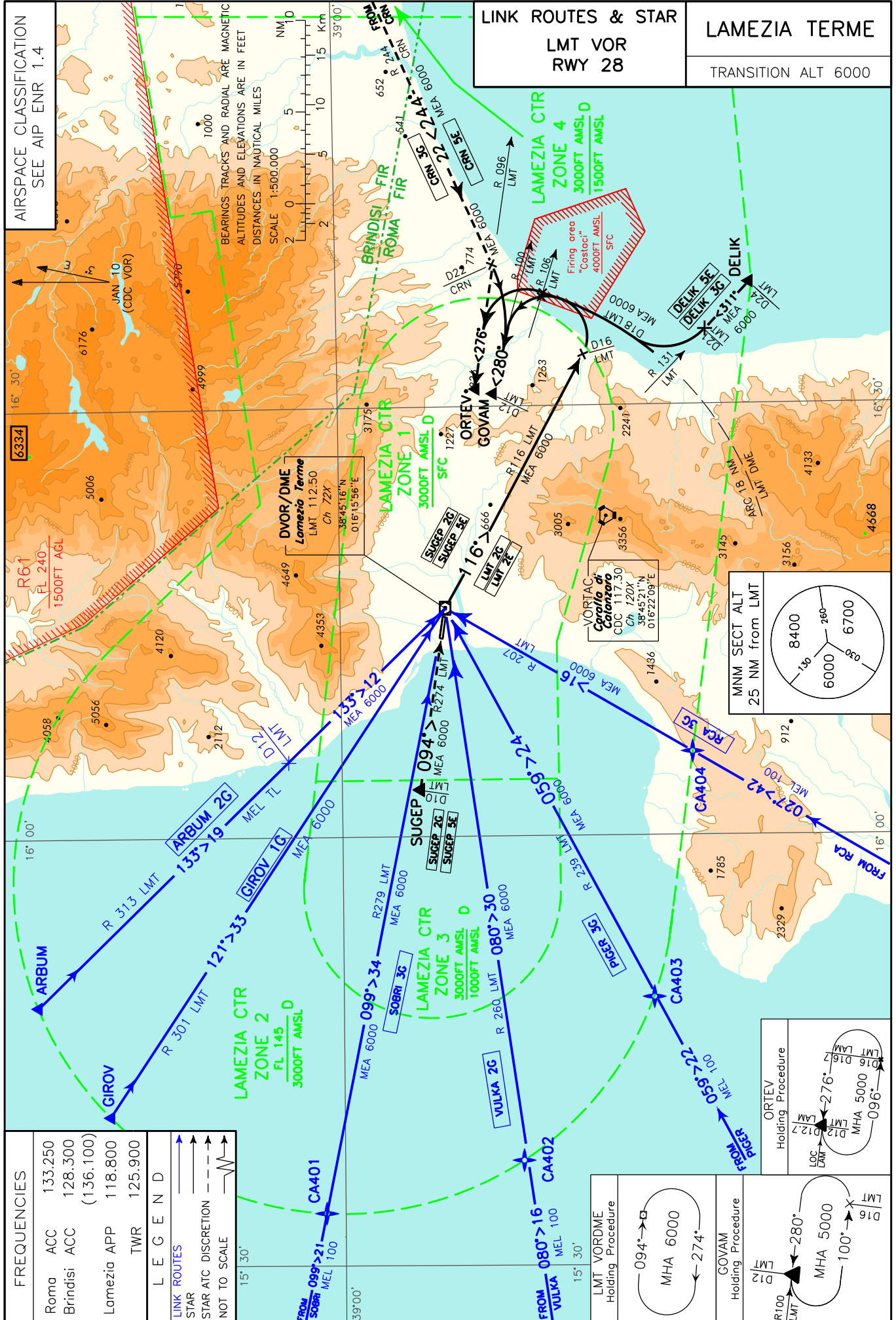


CHANGE: Brindisi ACC FREQ modified and Roma ACC FREQ added



AIRSPACE CLASSIFICATION  
SEE AIP ENR 1.4

BEARINGS TRACKS AND RADIAL ARE MAGNETIC  
ALTITUDES AND ELEVATIONS ARE IN FEET  
DISTANCES IN NAUTICAL MILES  
SCALE 1:500,000

LINK ROUTES & STAR  
LMT VOR  
RWY 28

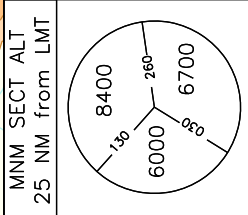
LAMEZIA TERME  
TRANSITION ALT 6000

FREQUENCIES	
Roma ACC	133.250
Brindisi ACC	128.300
	(136.100)
Lamezia APP	118.800
TWR	125.900

LEGEND	
LINK ROUTES	→
STAR	↑
STAR ATC DISCRETION	---
NOT TO SCALE	⚡

LMT VORDME Holding Procedure	
GOVAM Holding Procedure	
ORTEV Holding Procedure	



**STARS RWY 28****DELIK 3G**

DELIK – TR 311° (RDL 131 LMT VOR) - fino a 21 NM LMT DME, quindi virare a destra ed inserirsi sull'ARCO 18 NM LMT DME; attraversando RDL 106 LMT VOR, virare a sinistra per intercettare e seguire RDL 100 LMT VOR (TR 280°) per il punto GOVAM.

MEL/MEA:DELIK – GOVAM: 6000 FT

**DELIK 3G**

DELIK – TR 311° (RDL 131 LMT VOR) - until 21 NM LMT DME, then turn right to join ARC 18 NM LMT DME; crossing RDL 106 LMT VOR, turn left to join RDL 100 LMT VOR (TR 280°) bound to GOVAM.

**DELIK 5E**

DELIK – TR 311° (RDL 131 LMT VOR) fino a 21 NM LMT DME, quindi virare a destra ed inserirsi sull'ARCO 18 NM LMT DME; attraversando RDL 106 LMT VOR, virare a sinistra per intercettare e seguire RDL 096 LMT VOR (TR 276°) per il punto ORTEV.

MEL/MEA: DELIK – ORTEV: 6000 FT

**DELIK 5E**

DELIK – TR 311° (RDL 131 LMT VOR) until 21 NM LMT DME, then turn right to join ARC 18 NM LMT DME; crossing RDL 106 LMT VOR, turn left to join RDL 096 LMT VOR (TR 276°) bound to ORTEV.

**SUGEP 2G (a discrezione ATC – a seguito mancato avvicinamento)**

SUGEP – TR 094° (RDL 274 LMT VOR) – LMT VOR da lasciare su RDL 116 LMT VOR fino a 16 NM LMT DME, quindi virare a sinistra per intercettare e seguire RDL 100 LMT VOR (TR 280°) per il punto GOVAM.

MEA: SUGEP – GOVAM: 6000 FT

**SUGEP 2G (ATC discretion – following missed approach)**

SUGEP – TR 094° (RDL 274 LMT VOR) – LMT VOR to be left on RDL 116 LMT VOR until 16 NM LMT DME, then turn left until joining RDL 100 LMT VOR (TR 280°) bound to GOVAM.

**SUGEP 5E (a discrezione ATC – a seguito mancato avvicinamento)**

SUGEP – TR 094° (RDL 274 LMT VOR) – Lasciare LMT VOR su RDL 116 fino a 16 NM LMT DME, quindi virare a sinistra fino ad intercettare e seguire RDL 096 LMT VOR (TR 276°) per il punto ORTEV.

MEA: SUGEP – ORTEV: 6000 FT

**SUGEP 5E (ATC discretion – following missed approach)**

SUGEP – TR 094° (RDL 274 LMT VOR) – Leave LMT VOR on RDL 116 until 16 NM LMT DME, then turn left until joining RDL 096 LMT VOR (TR 276°) bound to ORTEV.

**CRN 3G (A discrezione ATC)**

CRN VOR – RDL 244 CRN VOR (TR 244°) fino a 22 NM CRN DME, quindi virare a destra per intercettare e seguire RDL 100 LMT VOR (TR 280°) per il punto GOVAM.

MEL/MEA: CRN VOR/DME – GOVAM: 6000 FT

**CRN 3G (ATC discretion)**

CRN – RDL 244 CRN VOR (TR 244°) until 22 NM CRN DME, then turn right to join RDL 100 LMT VOR (TR 280°) bound to GOVAM.

**CRN 5E (A discrezione ATC)**

CRN VOR – RDL 244 CRN VOR (TR 244°) fino a 22 NM CRN DME, quindi virare a destra per intercettare e seguire RDL 096 LMT VOR (TR 276°) per il punto ORTEV.

MEL/MEA: CRN VOR/DME – ORTEV: 6000 FT

**CRN 5E (ATC discretion)**

CRN – RDL 244 CRN VOR (TR244°) until 22 NM CRN DME, then turn right to join RDL 096 LMT VOR (TR 276°) bound to ORTEV.

**LMT 2G**

LMT VOR/DME - RDL 116 LMT VOR fino a 16 NM LMT DME, quindi virare a sinistra per intercettare e seguire RDL 100 LMT VOR (TR 280°) per il punto GOVAM.

MEA: LMT VOR/DME – GOVAM 6000 FT

**LMT 2G**

LMT VOR/DME – RDL 116 LMT VOR until 16 NM LMT DME, then turn left until joining RDL 100 LMT VOR (TR 280°) bound to GOVAM.

**LMT 2E**

LMT VOR/DME - RDL 116 LMT VOR fino a 16 NM LMT DME, quindi virare a sinistra per intercettare e seguire RDL 096 LMT VOR (TR 276°) per il punto ORTEV.

MEA: LMT VOR/DME – ORTEV: 6000 FT

**LMT 2E**

LMT VOR/DME – RDL 116 LMT VOR until 16 NM LMT DME, then turn left until joining RDL 096 LMT VOR (TR 276°) bound to ORTEV.

## LINK ROUTES RWY 28

**ARBUM 2G**

ARBUM – TR 133° (RDL 313 LMT VOR) LMT VOR/DME

MEA: ARBUM – RDL 313/12 NM LMT VOR/DME: TL; RDL 313/12 NM LMT VOR/DME – LMT VOR/DME: 6000 FT

**ARBUM 2G**

ARBUM – TR 133° (RDL 313 LMT VOR) - LMT VOR/DME

**GIROV 1G**

GIROV – TR 121° (RDL 301 LMT VOR) - LMT VOR/DME

**GIROV 1G**

GIROV – TR 121° (RDL 301 LMT VOR) - LMT VOR/DME

MEA: GIROV – LMT VOR/DME: 6000 FT

**RCA 3G**

RCA VOR – RDL 027 RCA VOR (RDL 207 LMT VOR) - LMT VOR/DME.

**RCA 3G**

RCA VOR – RDL 027 RCA VOR (RDL 207 LMT VOR) - LMT VOR/DME.

MEL/MEA: RCA VOR – CA404: FL 100; CA404 – LMT VOR/DME: 6000 FT

**SOBRI 3G**

SOBRI – RDL 279 LMT VOR (TR 099°) – LMT VOR/DME.

**SOBRI 3G**

SOBRI – RDL 279 LMT VOR (TR 099°) – LMT VOR/DME.

MEL/MEA: SOBRI – CA401: FL100; CA401 – LMT VOR/DME: 6000 FT

**VULKA 2G**

VULKA – RDL 260 LMT VOR (TR 080°) – LMT VOR/DME.

**VULKA 2G**

VULKA – RDL 260 LMT VOR (TR 080°) – LMT VOR/DME.

MEL/MEA: VULKA – CA402: FL100; CA402 – LMT VOR/DME: 6000 FT

**PIGER 3G**

PIGER – RDL 239 LMT VOR (TR 059°) – LMT VOR/DME.

**PIGER 3G**

PIGER – RDL 239 LMT VOR (TR 059°) – LMT VOR/DME.

MEL/MEA: PIGER – CA403: FL100; CA403 – LMT VOR/DME: 6000 FT

Waypoint	Latitude	Longitude
CA401	N39010272	E015334219
CA402	N38501508	E015372129
CA403	N38430567	E015484573
CA404	N38405185	E016054809