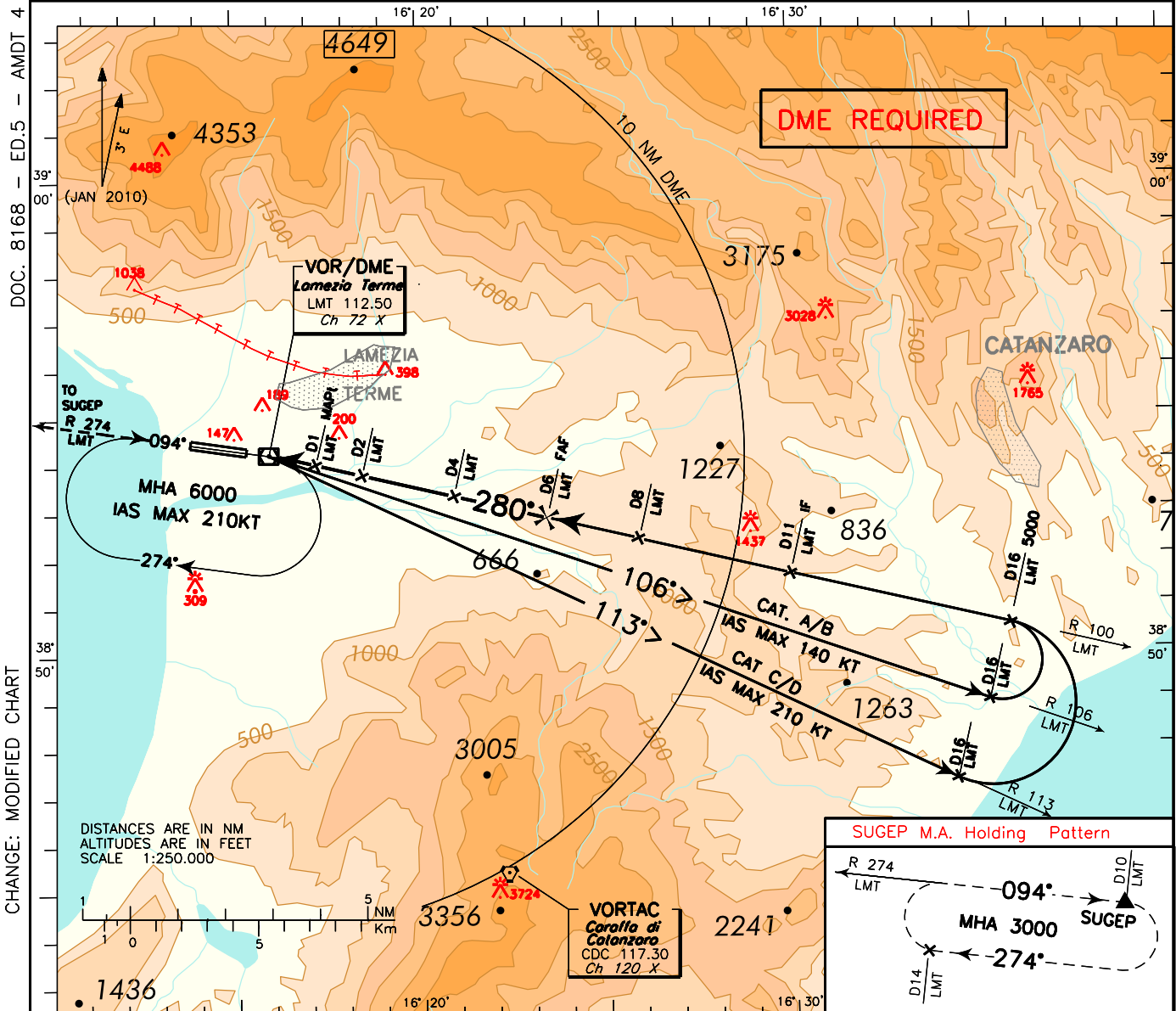


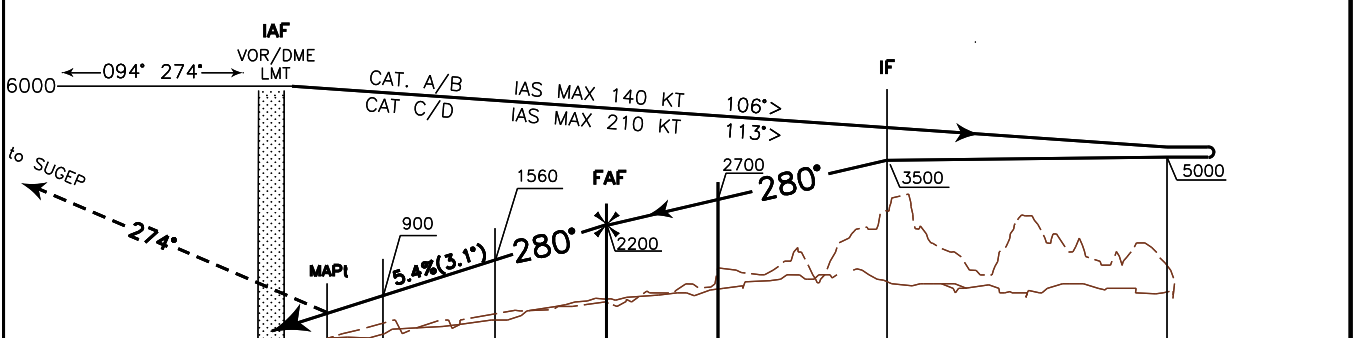
# ICAO - INSTRUMENT APPROACH CHART

AD 2 LICA 5-11

REMARK: final track off set 4.70° RWY center line intercepted 3267 m before THR 28	APP	Lamezia Approach	118.800	AD ELEV	39	L I C A	LAMEZIA TERME
	TWR	Lamezia Tower	125.900				VOR - Y RWY 28



TRANSITION ALT 6000 MISSED APPROACH: At 1 NM LMT DME proceed on TR 274° (RDL 274 LMT VOR) to SUGEP climbing to 3000 ft.



LMT DME	THR ELEV 39	D1	D2	D3	D4	D5	D6	D7	D8	D9	D10	D11	D12	D13	D14	D15	D16	LMT DME					
NM		3	2	1	0	1	2	3	4	5	6	7	8	9	10	11	12	13	14	15	16	17	NM

STRAIGHT IN APPROACH	OCA (OCH)				(*) CIRCLING SECTOR NOT ALLOWED	FT PER MIN	GS	FAF-MAPT	MAPT-THR	LMT DME	ALT (HGT)	MNM SECT ALT LMT VOR DME
	VOR	A	B	C								
			700 (661)			875	160	1 : 53	0 : 33	6	2200 (2161)	
						766	140	2 : 09	0 : 38	5	1875 (1836)	
						656	120	2 : 30	0 : 44	4	1550 (1511)	
						547	100	3 : 00	0 : 53	3	1225 (1186)	
(*) CIRCLING		720 (681)		1250(1211)	2050(2011)	437	80	3 : 45	1 : 07	2	900 (861)	

<b>FIX/POINT</b>	<b>Coordinates (WGS84)</b>
IAF (LMT VOR)	38°54'16.0"N 016°15'55.6"E
IF	38°51'44.0"N 016°29'38.5"E
RDL 100/8 NM LMT VOR/DME	38°52'25.7"N 016°25'54.2"E
FAF	38°52'53.3"N 016°23'24.8"E
RDL 100/4 NM LMT VOR/DME	38°53'21.0"N 016°20'55.1"E
RDL 100/2 NM LMT VOR/DME	38°53'48.5" N 016°18'25.5"E
MAPt	38°54'02.3"N 016°17'10.7"E