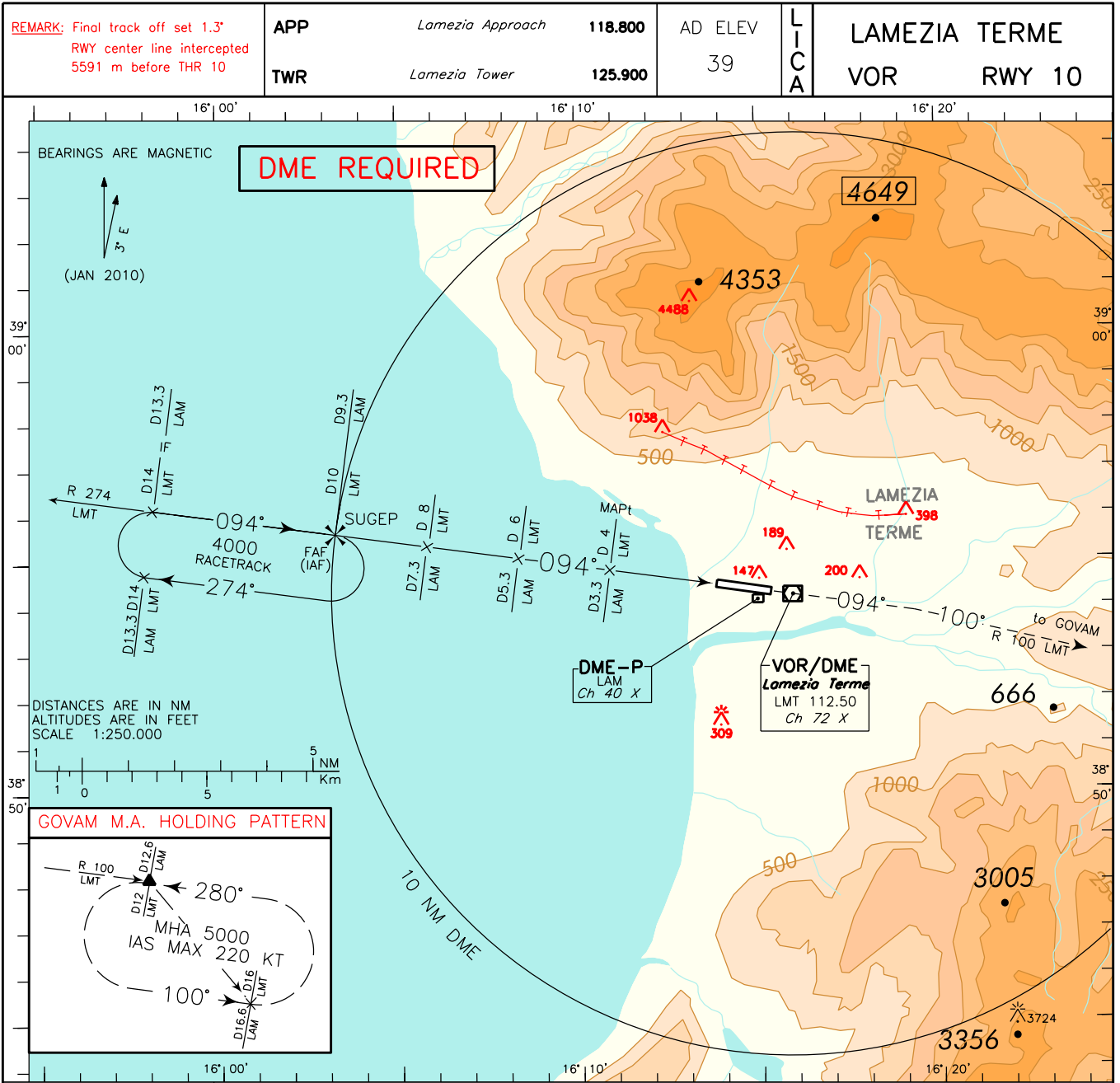


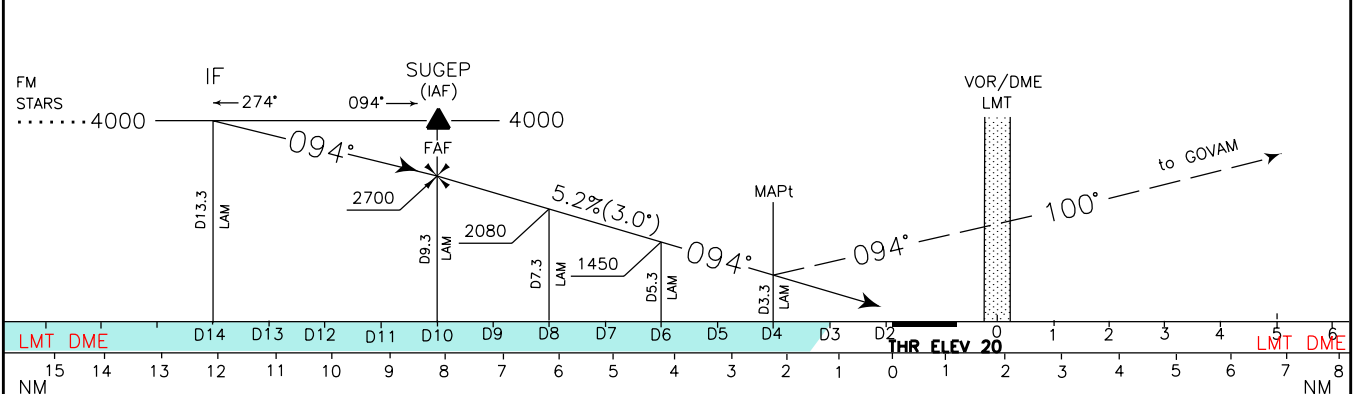
ICAO - INSTRUMENT APPROACH CHART

AD 2 LICA 5-13

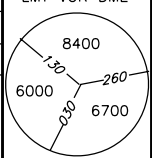
DOC. 8168 - ED.5 - AMDT 4
CHANGE: "LAM" DME DISTANCE ADDED



TRANSITION ALT 6000 **MISSED APPROACH:** At D4 LMT DME (D3.3 LAM DME) proceed on TR 094° (RDL 274) climbing to 5000 ft to LMT VOR, then continue on track 100° (RDL 100 LMT VOR) until GOVAM Holding pattern to be reached at 5000 ft.



OCA (OCH)		A	B	C	D	(*) CIRCLING SECTOR NOT ALLOWED	FT PER MIN	GS	FAF-MAPt	MAPt-THR	LMT DME	ALT (HGT)	MNM SECT ALT
STRAIGHT IN APPROACH	VOR	1000 (980)						850	160	2 : 15	0 : 52	9	2400 (2380)
							745	140	2 : 34	1 : 00	8	2080 (2060)	
							635	120	3 : 00	1 : 10	7	1765 (1745)	
							530	100	3 : 36	1 : 24	6	1450 (1430)	
(*) CIRCLING		1000 (961)		1250(1211)	2050(2011)		425	80	4 : 30	1 : 45	5	1130 (1110)	



FIX/POINT	Coordinates (WGS84)
IAF (SUGEP)	38°55'30.9"N 016°03'13.2"N
IF	38°56'00.5"N 015°58'08.1"E
FAF (SUGEP)	38°55'30.9"N 016°03'13.2"N
RDL 274/8 NM LMT VOR/DME	38°55'16.1"N 016°05'45.8"E
RDL 100/6 NM LMT VOR/DME	38°55'01.1"N 016°08'18.4"E
MAPt	38°54'46.2"N 016°10'50.9"E