

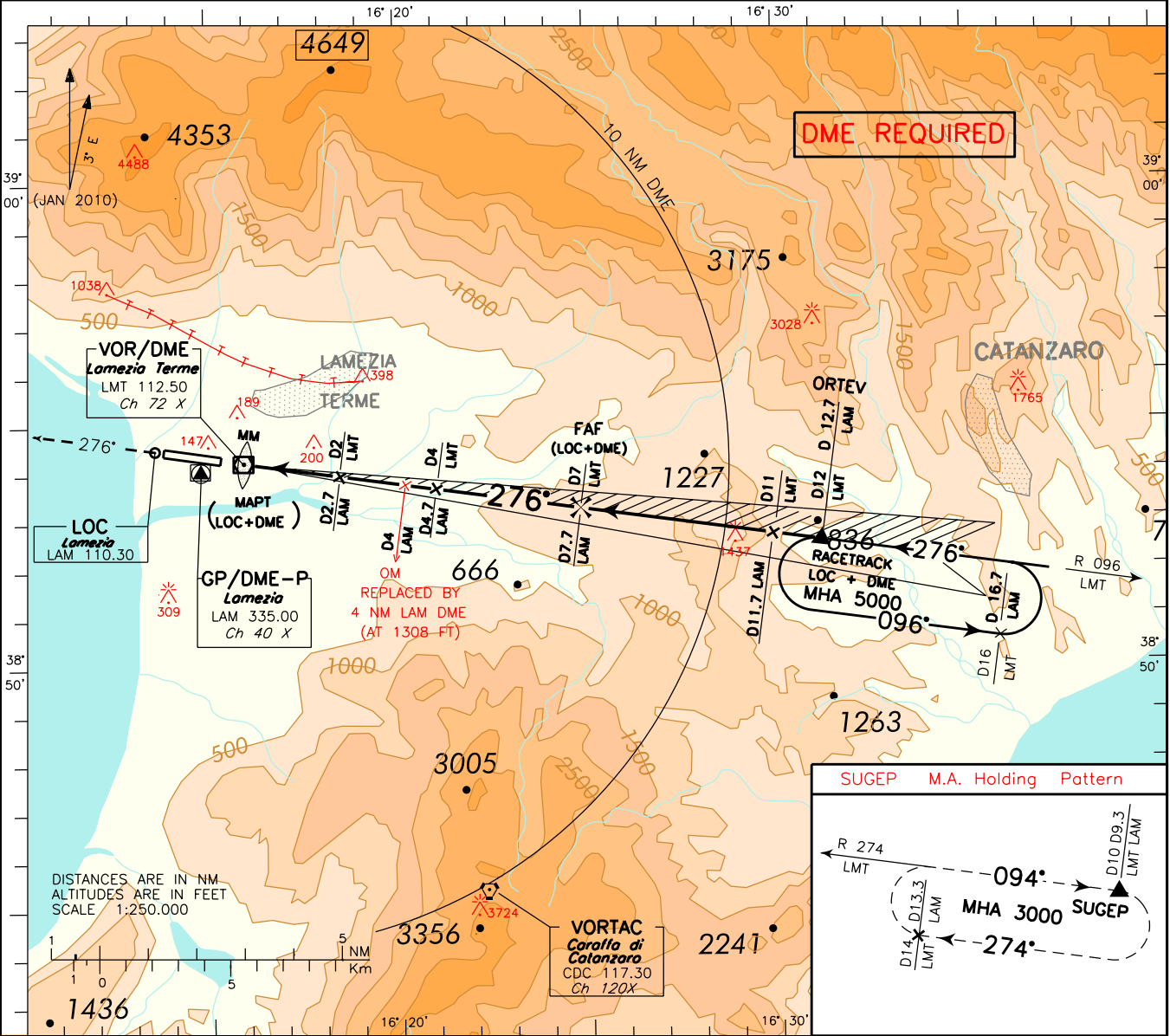
ICAO - INSTRUMENT APPROACH CHART

AD 2 LICA 5-3

DOC. 8168 - ED.5 - AMDT 4

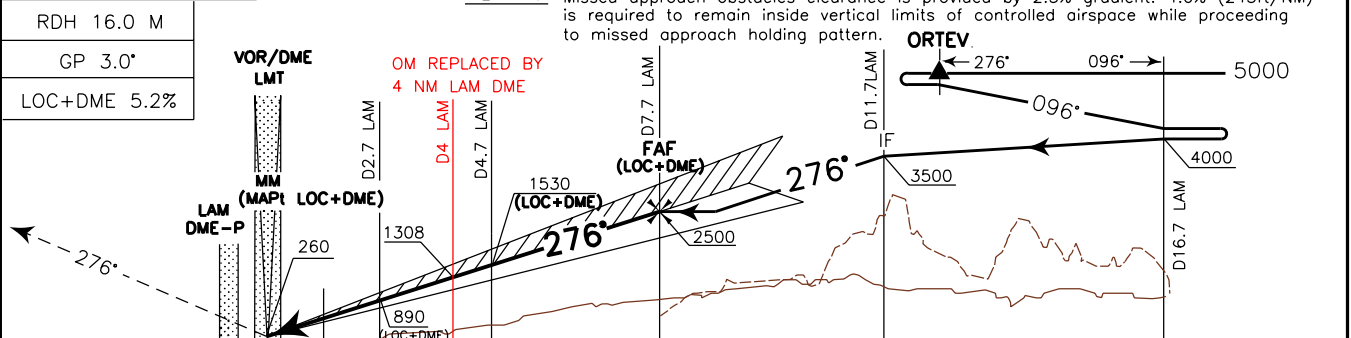
APP	Lamezia Approach	118.800	AD ELEV	39	L I C A	LAMEZIA TERME ILS or LOC-Z RWY 28
TWR	Lamezia Tower	125.900				

CHANGE: MISSED APPROACH REMARK ADDED



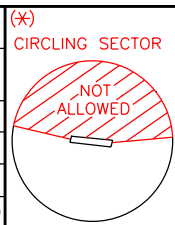
TRANSITION ALT 6000

MISSED APPROACH: Proceed on TR 276° climbing to 3000 ft. At 600 ft join RDL 274 LMT VOR bound to SUGEP.
 REMARK: Missed approach obstacles clearance is provided by 2.5% gradient. 4.0% (243ft/NM) is required to remain inside vertical limits of controlled airspace while proceeding to missed approach holding pattern.

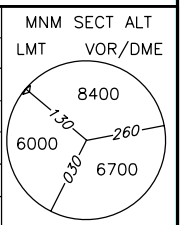


LAM DME	THR ELEV 39	D1	D2	D3	D4	D5	D6	D7	D8	D9	D10	D11	D12	D13	D14	D15	D16	D17	LAM DME				
LMT DME		3	2	1	0	1	2	3	4	5	6	7	8	9	10	11	12	13	14	15	16	17	LMT DME

OCA (OCH)		A	B	C	D
STRAIGHT IN APPROACH	ILS	370 (331)	380 (341)	390 (351)	400 (361)
	LOC	700 (661)			
(*) CIRCLING		720 (681)	1250(1211)	2050(2011)	



FT PER MIN	GS	FAF-OM	OM-MM	LAM DME	ALT(HGT)	MNM SECT ALT
850	160	3.74NM	3.32 NM	7	2264(2225)	
745	140	1 : 24	1 : 15	6	1945(1906)	
640	120	1 : 36	1 : 25	5	1627(1588)	
530	100	1 : 52	1 : 40	4	1308(1269)	
425	80	2 : 15	2 : 00	3	990(951)	
		2 : 48	2 : 29	2	671(632)	



FIX/POINT	Coordinates (WGS84)
IAF (ORTEV)	38°52'22.2"N 016°31'05.7"E
IF	38°52'30.9"N 016°29'52.7"E
FAP / FAF (LOC ONLY)	38°53'06.6"N 016°24'52.1"E
INT LOC COURSE/4.7 NM LAM LOC/DME (LOC ONLY)	38°53'33.9"N 016°21'00.9"E
INT LOC COURSE/2.7 NM LAM LOC/DME (LOC ONLY)	38°53'51.7"N 016°18'28.9"E
MAPt (LOC ONLY)	38°54'09.7"N 016°15'55.6"E