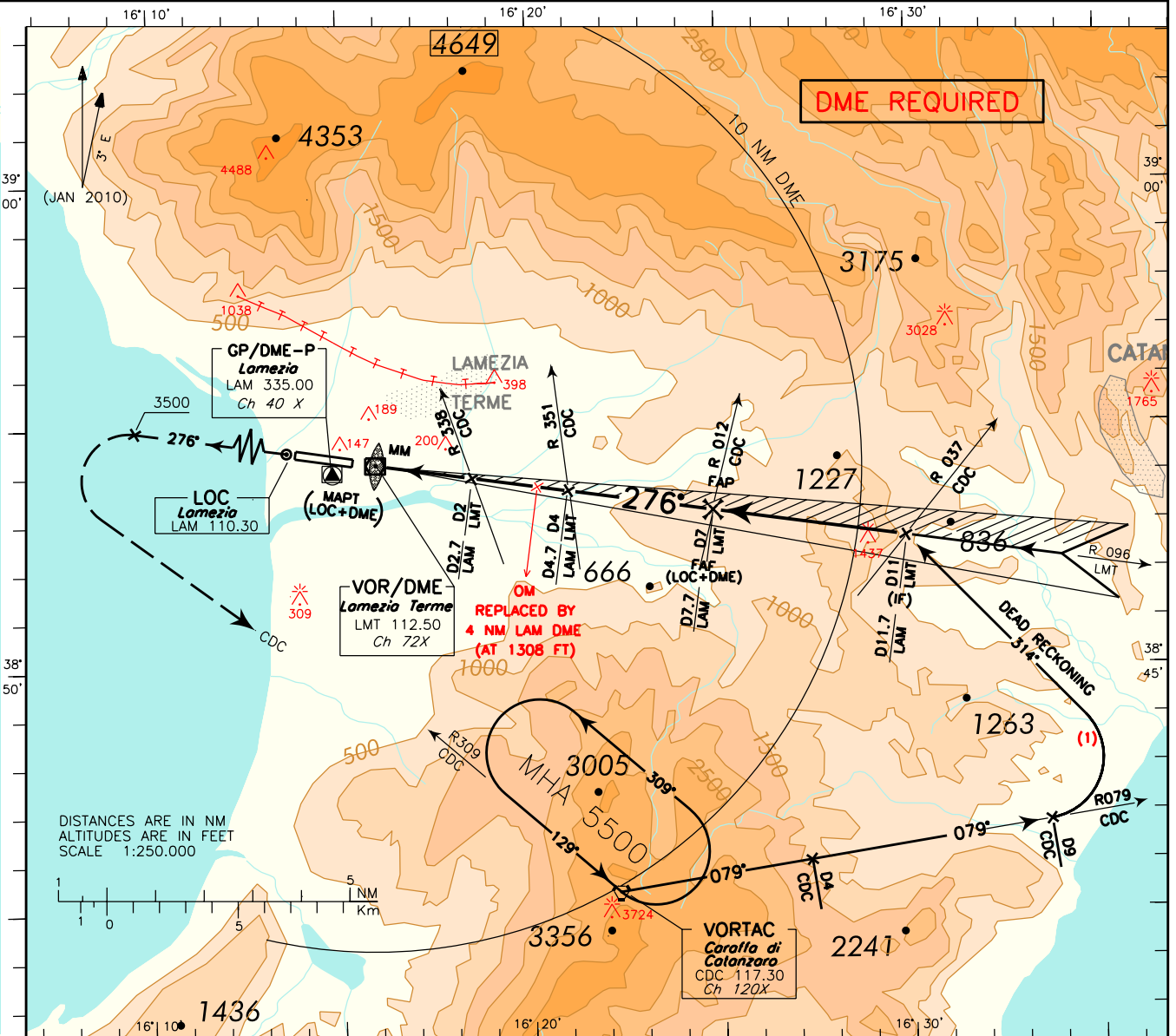


# ICAO - INSTRUMENT APPROACH CHART

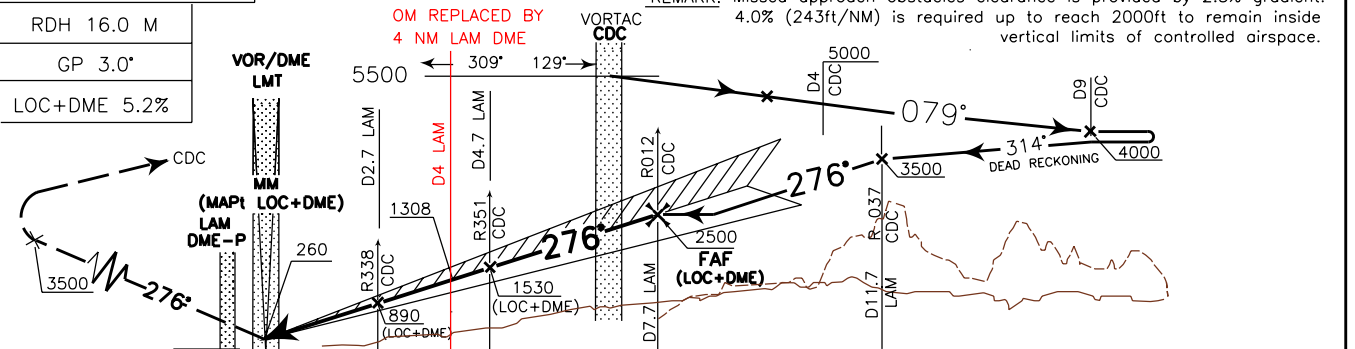
AD 2 LICA 5-5

(1) <b>WARNING:</b> Dead reckoning Based on 210 kt IAS MAX.	APP	Lamezia Approach	118.800	AD ELEV	39	L I C A	LAMEZIA TERME ILS or LOC-Y RWY 28
	TWR	Lamezia Tower	125.900				

CHANGE: DESCENT ALTITUDE AT 4NM CDC VORTAC UPDATED

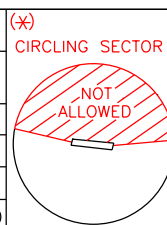


**TRANSITION ALT 6000** MISSED APPROACH: Proceed on TR 276° (R 276 LMT VOR) climbing to 5500 ft. Leaving 3500 ft turn left to CDC VORTAC. **REMARK:** Missed approach obstacles clearance is provided by 2.5% gradient. 4.0% (243ft/NM) is required up to reach 2000ft to remain inside vertical limits of controlled airspace.

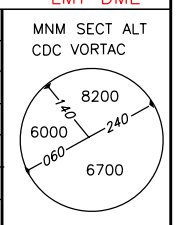


LAM DME	THR ELEV 39	D1	D2	D3	D4	D5	D6	D7	D8	D9	D10	D11	D12	D13	D14	D15	D16	LAM DME					
LMT DME		3	2	1	0	1	2	3	4	5	6	7	8	9	10	11	12	13	14	15	16	17	LMT DME

OCA (OCH)	A	B	C	D
ILS	370 (331)	380 (341)	390 (351)	400 (361)
LOC	700 (661)			
(*) CIRCLING	720 (681)	1250(1211)	2050(2011)	



FT PER MIN	GS	FAF-OM	OM-MM	DME LAM	ALT(HGT)	MNM SECT ALT CDC VORTAC
855	160	1 : 24	1 : 15	6	1945(1906)	
745	140	1 : 36	1 : 25	5	1627(1588)	
640	120	1 : 52	1 : 40	4	1308(1269)	
530	100	2 : 15	2 : 00	3	990(951)	
425	80	2 : 48	2 : 29	2	671(632)	



<b>FIX/POINT</b>	<b>Coordinates (WGS84)</b>
IAF (CDC VORTAC)	38°45'21.1"N 016°22'08.9"E
IF	38°52'30.9"N 016°29'52.7"E
FAP / FAF (LOC ONLY)	38°53'06.6"N 016°24'52.1"E
INT LOC COURSE/4.7 NM LAM LOC/DME (LOC ONLY)	38°53'33.9"N 016°21'00.9"E
INT LOC COURSE/2.7 NM LAM LOC/DME (LOC ONLY)	38°53'51.7"N 016°18'28.9"E
MAPt (LOC ONLY)	38°54'09.7"N 016°15'55.6"E