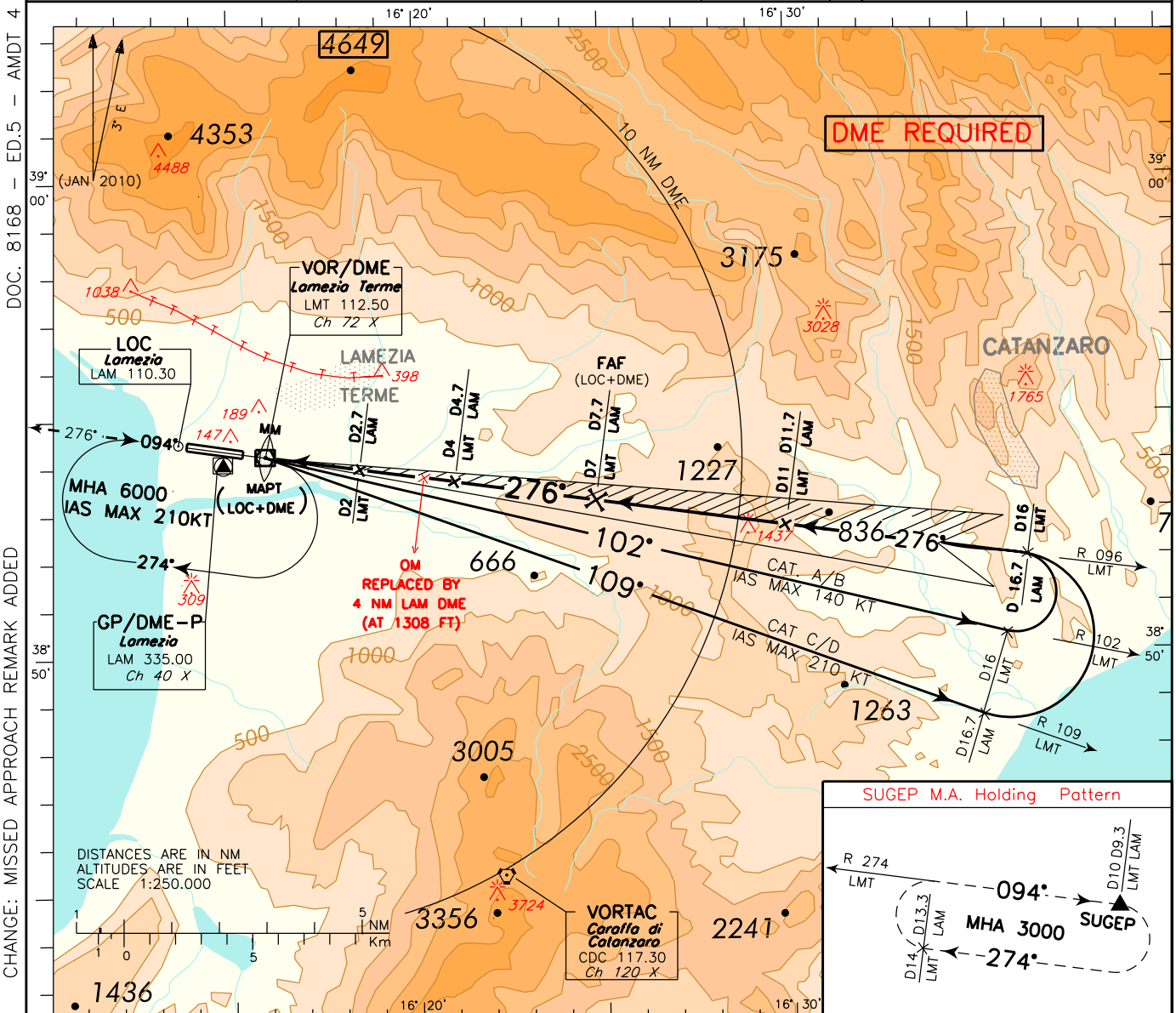


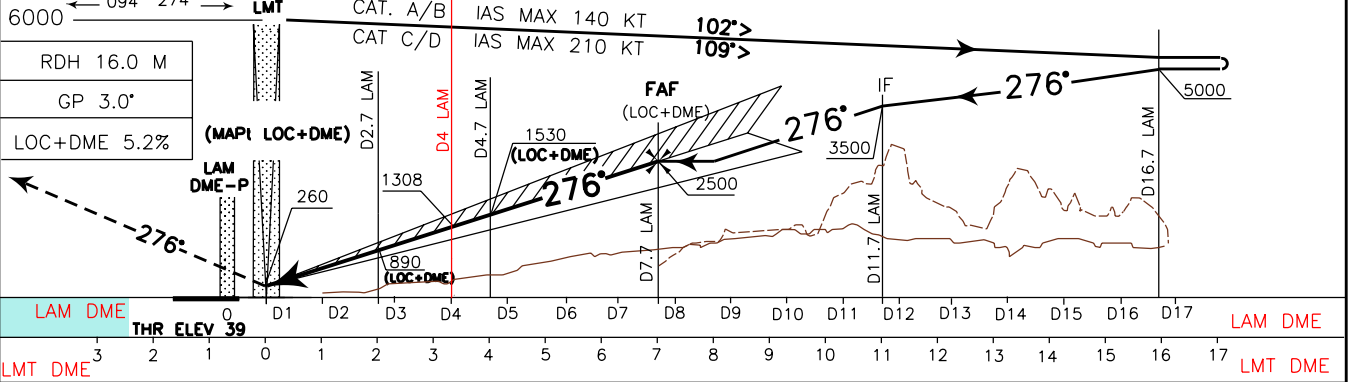
APP *Lamezia Approach* 118.800 AD ELEV 39
 TWR *Lamezia Tower* 125.900

LICA
 LAMEZIA TERME
 ILS or LOC-X RWY 28



DOC. 8168 - ED.5 - AMDT 4
 CHANGE: MISSED APPROACH REMARK ADDED

TRANSITION ALT 6000
MISSED APPROACH: Proceed on TR 276° climbing to 3000 ft. At 600 ft join RDL 274 LMT VOR bound to SUGEP. Missed approach obstacles clearance is provided by 2.5% gradient. 4.0% (243ft/NM) is required to remain inside vertical limits of controlled airspace while proceeding to missed approach holding pattern.
 REMARK: OM REPLACED BY 4 NM LAM DME



STRAIGHT IN APPROACH	OCA (OCH)				(*) CIRCLING SECTOR NOT ALLOWED	FT PER MIN	GS	FAF-OM	OM-MM	DME LAM	ALT(HGT)	MNM SECT ALT LMT VOR/DME
	A	B	C	D								
ILS	370 (331)	380 (341)	390 (351)	400 (361)		855	160	1 : 24	1 : 15	5	1945(1906)	
LOC	700 (661)					745	140	1 : 36	1 : 25	4	1627(1588)	
						640	120	1 : 52	1 : 40	3	1308(1269)	
						530	100	2 : 15	2 : 00	2	990(951)	
(*) CIRCLING	720 (681)		1250(1211) 2050(2011)			425	80	2 : 48	2 : 29	1	671(632)	

FIX/POINT	Coordinates (WGS84)
IAF (LMT VOR)	38°54'16.0"N 016°15'55.6"E
IF	38°52'30.9"N 016°29'52.7"E
FAP / FAF (LOC ONLY)	38°53'06.6"N 016°24'52.1"E
INT LOC COURSE/4.7 NM LAM LOC/DME (LOC ONLY)	38°53'33.9"N 016°21'00.9"E
INT LOC COURSE/2.7 NM LAM LOC/DME (LOC ONLY)	38°53'51.7"N 016°18'28.9"E
MAPt (LOC ONLY)	38°54'09.7"N 016°15'55.6"E