

ICAO - INSTRUMENT APPROACH CHART

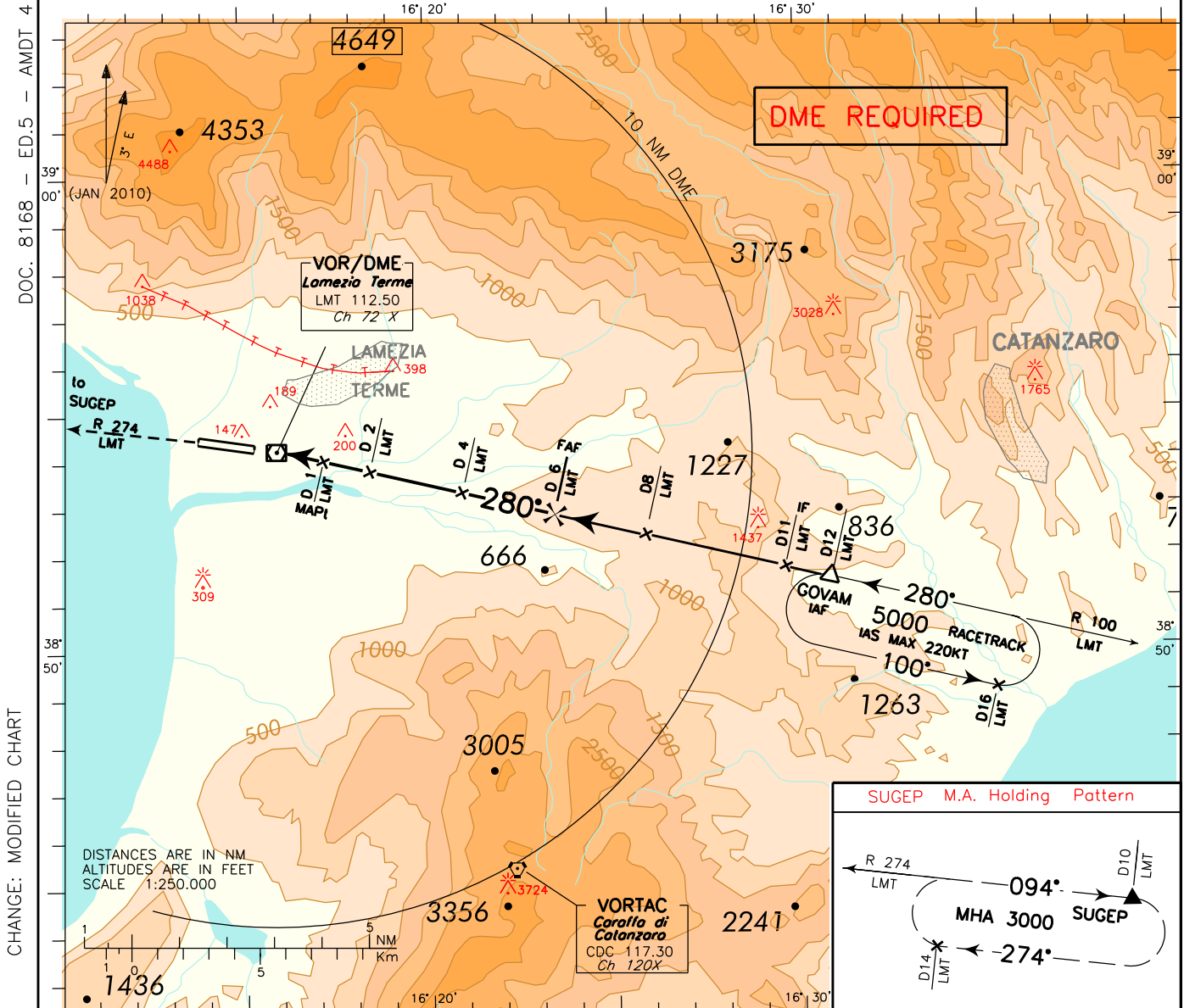
AD 2 LICA 5-9

REMARK: final track off set 4.70°
RWY center line intercepted
3267 m before THR 28

APP *Lamezia Approach* 118.800
TWR *Lamezia Tower* 125.900

AD ELEV 39

LICA
LAMEZIA TERME
VOR - Z RWY 28

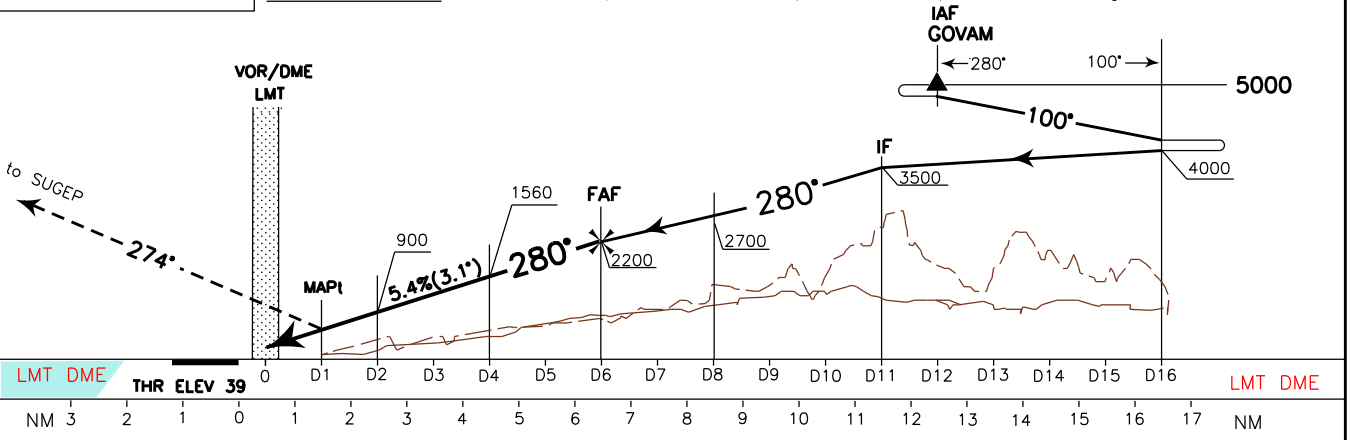


DOC. 8168 - ED.5 - AMDT 4

CHANGE: MODIFIED CHART

TRANSITION ALT 6000

MISSED APPROACH: At D1 LMT DME proceed on TR 274° (R 274 LMT VOR) to SUGEP climbing to 3000 ft.



OCA (OCH)		A	B	C	D	(*) CIRCLING SECTOR NOT ALLOWED	FT PER MIN	GS	FAF-MAPT	MAPt-THR	DME LMT	ALT (HGT)	MNM SECT ALT LMT VOR DME
STRAIGHT IN APPROACH		700 (661)					875	160	1 : 53	0 : 33	6	2200 (2161)	
(*) CIRCLING		720 (681)		1250(1211) 2050(2011)		766	140	2 : 09	0 : 38	5	1875 (1836)	6700	
						656	120	2 : 30	0 : 44	4	1550 (1511)	8400	
						547	100	3 : 00	0 : 53	3	1225 (1186)	6000	
						437	80	3 : 45	1 : 07	2	900 (861)	260	

FIX/POINT	Coordinates (WGS84)
IAF (GOVAM)	38°51'30.1"N 016°30'53.2"N
IF	38°51'44.0"N 016°29'38.5"E
RDL 100/8 NM LMT VOR/DME	38°52'25.7"N 016°25'54.2"E
FAF	38°52'53.3"N 016°23'24.8"E
RDL 100/4 NM LMT VOR/DME	38°53'21.0"N 016°20'55.1"E
RDL 100/2 NM LMT VOR/DME	38°53'48.5" N 016°18'25.5"E
MAPt	38°54'02.3"N 016°17'10.7"E