

APP Catania Radar 119.250

AD ELEV

L
I
C
B

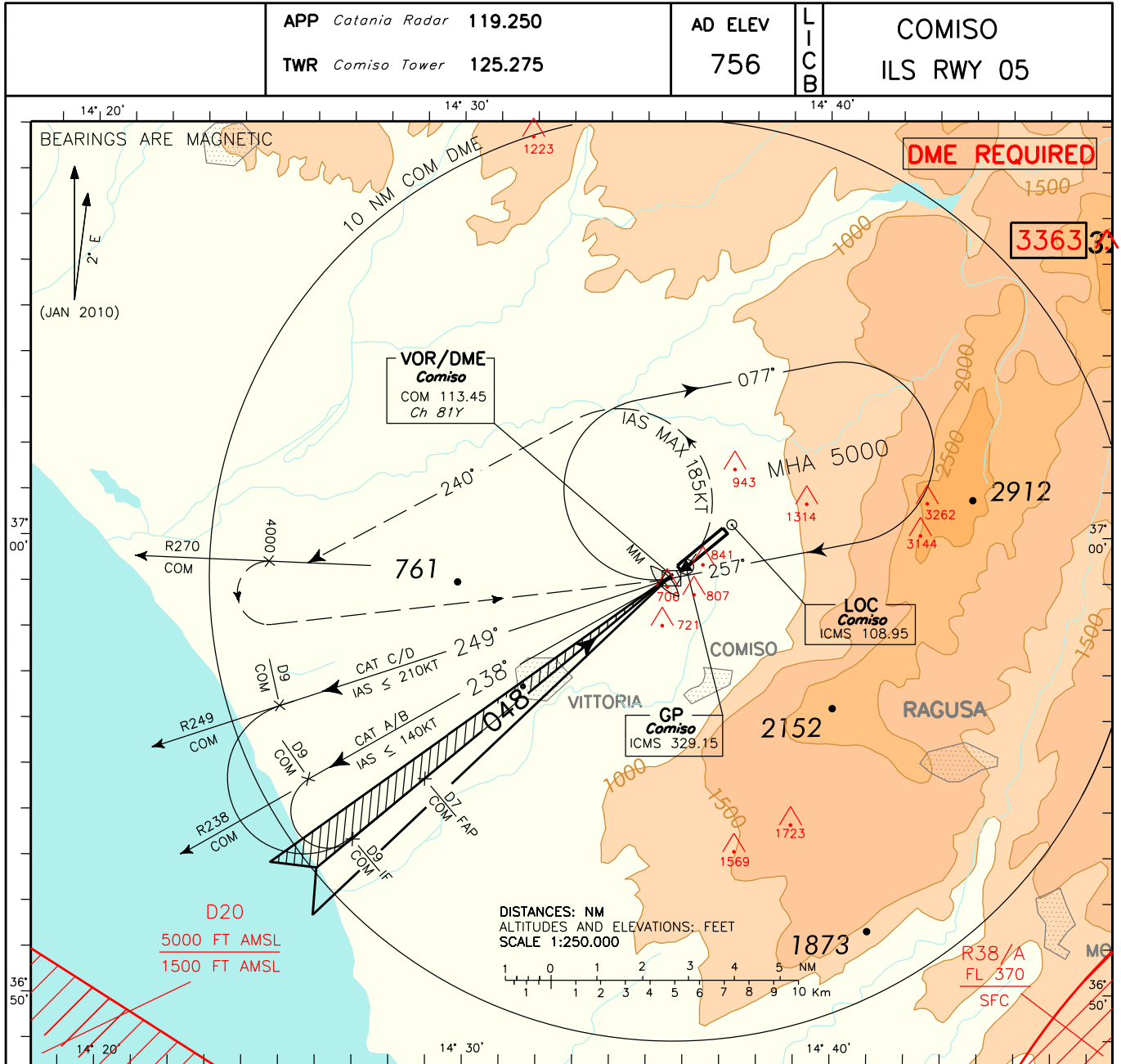
COMISO
ILS RWY 05

TWR Comiso Tower 125.275

756

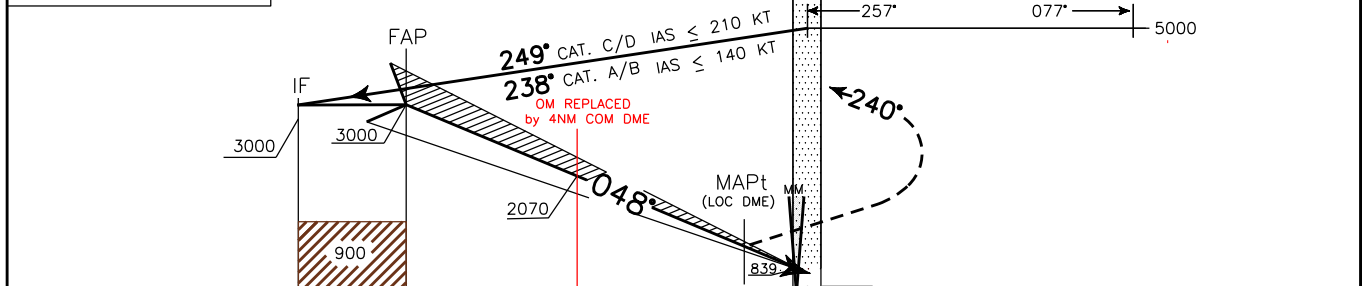
DOC.8168-ED.5 2006 AMD.4

NEW CHART



TRANSITION ALT 7000
ILS RDH 15M
GP 3°

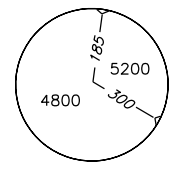
MISSED APPROACH: As soon as possible turn left (IAS MAX 185KT) on TR 240°, to join R270 COM VOR, climbing to 5000FT.
At 4000FT (not later than D10 COM DME) turn left to COM VOR to be reached at 5000FT.



COM DME D12 D11 D10 D9 D8 D7 D6 D5 D4 D3 D2 D1 0 THR ELEV 661 COM DME

NM 13 12 11 10 9 8 7 6 5 4 3 2 1 0 1 2 3 4 5 6 7 8 9 NM

OCA (OCH)		A	B	C	D	(*) CIRCLING SECTOR NOT ALLOWED ONLY NORTH OF RWY	GS	FT PER MIN	D7-OM	OM-THR	COM DME	ALT(HGT)	MNM SECT ALT COM VOR
STRAIGHT IN APPROACH	ILS	1041 (380)	1051 (390)	1059 (398)	1070 (409)				3 NM	4.27 NM	6 DME	2706 (2045)	
	LOC DME	1100 (439)					80	425	2 : 18	3 : 13	5 DME	2388 (1727)	
							100	531	1 : 47	2 : 34	4 DME	2070 (1409)	
							120	637	1 : 30	2 : 08	3 DME	1750 (1089)	
							140	743	1 : 17	1 : 50	2 DME	1432 (771)	
(*) CIRCLING		1400(644)	1650(894)	2050(1294)	2450(1694)		160	849	1 : 07	1 : 36	1 DME	1113 (452)	



FIX/POINT	Coordinates (WGS84)
IAF	36°59'06.3" N 14°35'40.7" E
IF	36°53'22.1" N 14°27'00.8" E
FAP	36°54'41.9"N 14°28'59.6"E