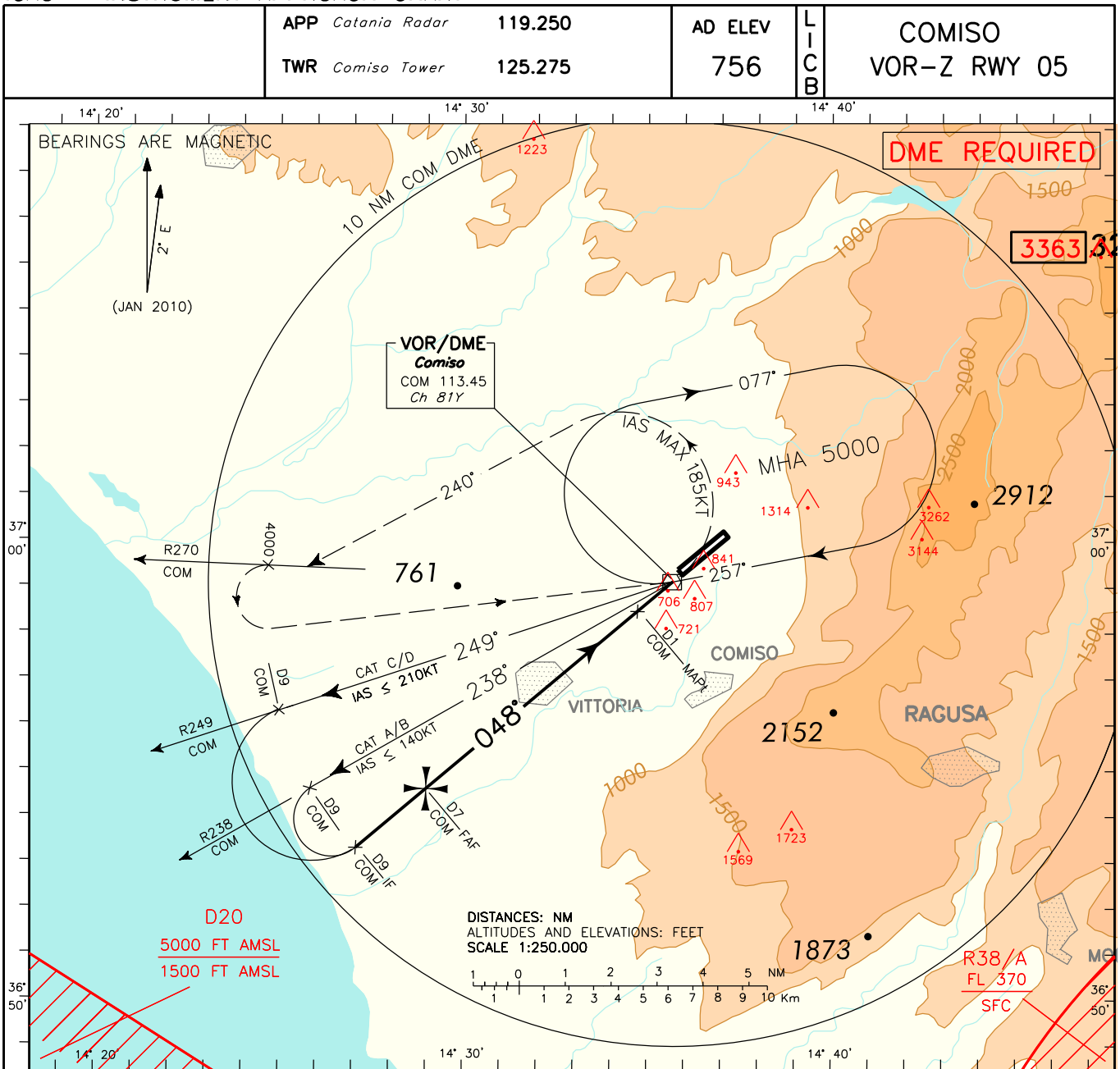
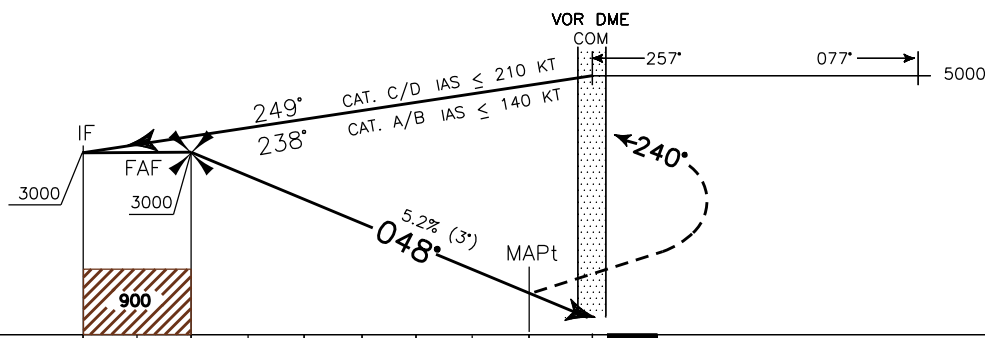


DOC.8168-ED.5 2006 AMD.4

NEW CHART



**TRANSITION ALT 7000** MISSED APPROACH: As soon as possible turn left (IAS MAX 185KT) on TR 240°, to join R270 COM VOR, climbing to 5000FT. At 4000FT (not later than D10 COM DME) turn left to COM VOR to be reached at 5000FT.



COM DME					D12	D11	D10	D9	D8	D7	D6	D5	D4	D3	D2	D1	0	1	2	3	4	5	6	7	8	9	COM DME				
NM													NM																		

STRAIGHT IN APPROACH	OCA (OCH)				(*) CIRCLING SECTOR	GS	FT PER MIN	FAF-MAPt		MAPt-THR		COM DME	ALT (HGT)	MNM SECT ALT	
	A	B	C	D				6 NM	1.26 NM	6 DME	2700 (2039)			COM	VOR
VORDME	1100 (439)					80	425	4 : 30	0 : 57	5 DME	2385 (1724)				
						100	531	3 : 36	0 : 45	4 DME	2070 (1409)				
						120	637	3 : 00	0 : 38	3 DME	1750 (1089)				
						140	743	2 : 34	0 : 32	2 DME	1430 (769)				
						160	849	2 : 15	0 : 28	1 DME	1115 (454)				
(*) CIRCLING	1400(644)	1650(894)	2050(1294)	2450(1694)											

<b>FIX/POINT</b>	<b>Coordinates (WGS84)</b>
IAF	36°59'06.3" N 14°35'40.7" E
IF	36°53'20.0" N 14°27'03.0" E
FAF	36°54'37.0"N 14°28'57.8"E
MAPt	36°58'27.7" N 14°34'42.8" E