

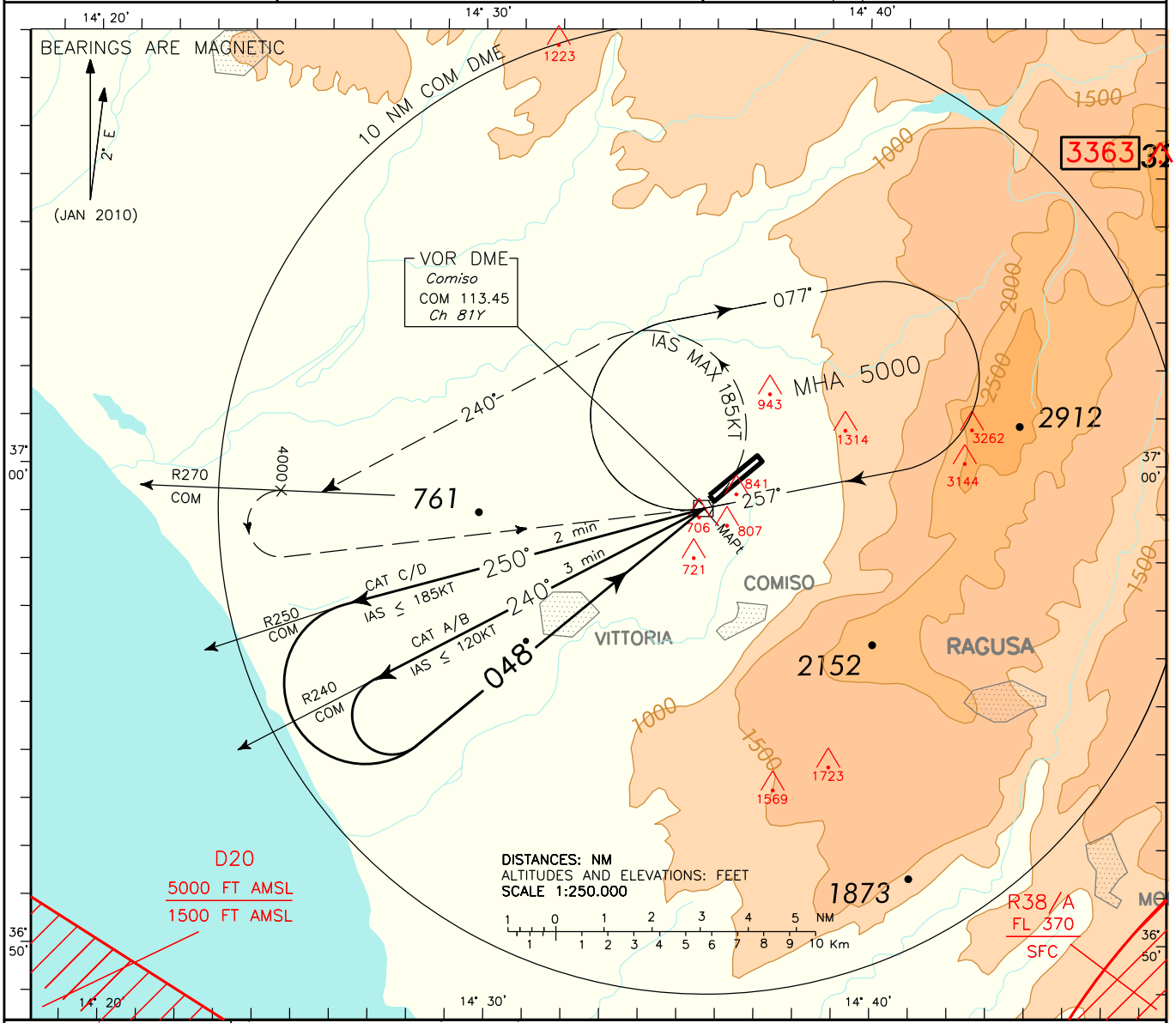
APP Catania Radar 119.250  
TWR Comiso Tower 125.275

AD ELEV  
756

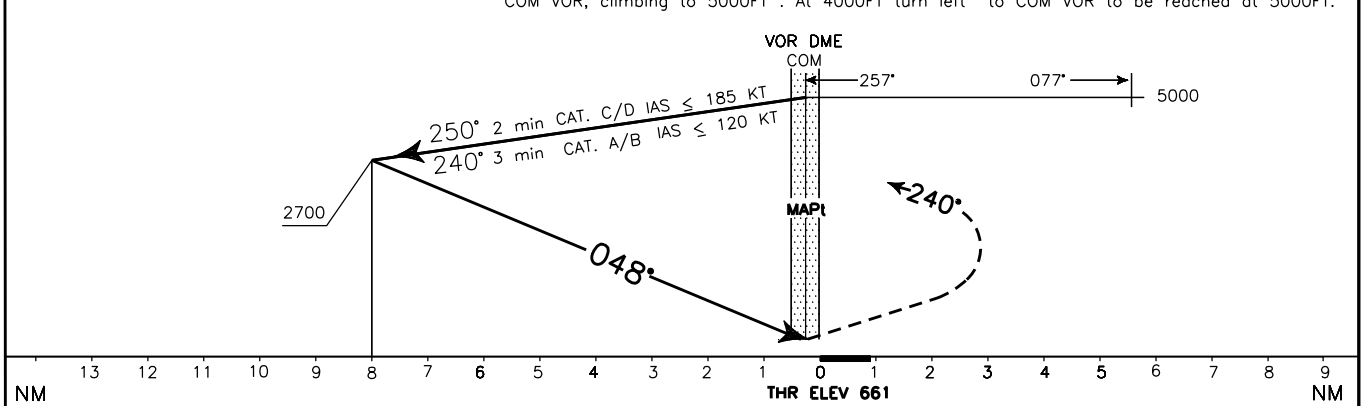
L  
I  
C  
B


COMISO  
VOR-Y RWY 05

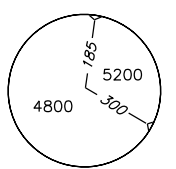
DOC.8168-ED.5 2006 AMD.4  
NEW CHART



**TRANSITION ALT 7000** MISSED APPROACH: As soon as possible, turn left (IAS MAX 185KT) on TR 240°, to intercept and follow R270 COM VOR, climbing to 5000FT. At 4000FT turn left to COM VOR to be reached at 5000FT.



OCA (OCH)		A	B	C	D	(*) CIRCLING SECTOR  ONLY NORTH OF RWY	GS	FT PER MIN	MNM SECT ALT		
STRAIGHT IN APPROACH	VOR	1150 (489)								COM	VOR
							80	425			
							100	531			
							120	637			
							140	743			
(*)	CIRCLING	1400(644)	1650(894)	2050(1294)	2450(1694)		160	849			



<b>FIX/POINT</b>	<b>Coordinates (WGS84)</b>
IAF	36°59'06.3" N 14°35'40.7" E
MAPt	36°59'06.3" N 14°35'40.7" E