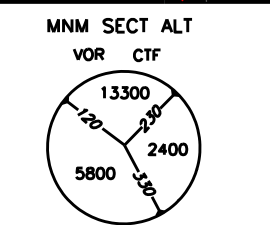


REMARK: Minimum levels provide at least 1000 ft terrain clearance with pressure values equal or higher than 960 Hpa
 (1) REMARK: STAR partially outside controlled airspace

AIRSPACE CLASSIFICATION

SEE AIP ENR 1.4



LEGEND

STAR
 STAR ATC DISCRETION

COBBA 2M

COBBA – TR 144° (RDL 324 CTF VOR) fino a 23 NM CTF DME, quindi virare a destra fino a intercettare e seguire ARC 21 NM CTF DME, quindi intercettando RDL 273 CTF VOR virare a sinistra fino a intercettare e seguire RDL 264 CTF VOR (TR 084°) per il punto GIGIX, quindi CTF VOR da lasciare su RDL 078 CTF VOR (TR 078°) per il punto INDAX.

MEL/MEA: COBBA – INT ARC 21 NM CTF DME/RDL 310 CTF VOR: FL 130; INT ARC 21 NM CTF DME/RDL 310 CTF VOR – GIGIX – RDL 264/11 NM CTF VOR/DME: 5500 FT; RDL 264/11 NM CTF VOR/DME – CTF VOR/DME: 4000 FT; CTF VOR/DME – INDAX: 3000 FT

LIBRO 2M

LIBRO – TR 106° (RDL 286 CTF VOR) fino a 23 NM CTF DME, quindi virare a destra fino a intercettare e seguire ARC 21 NM CTF DME, quindi intercettando RDL 273 CTF VOR virare a sinistra fino a intercettare e seguire RDL 264 CTF VOR (TR 084°) per il punto GIGIX, quindi CTF VOR da lasciare su RDL 078 CTF VOR (TR 078°) per il punto INDAX.

MEA: LIBRO – RDL 286/23 NM CTF VOR/DME: 6000 FT; RDL 286/23 NM CTF VOR/DME – GIGIX – RDL 264/11 NM CTF VOR/DME: 5500 FT; RDL 264/11 NM CTF VOR/DME – CTF VOR/DME: 4000 FT; CTF VOR/DME – INDAX: 3000 FT

NELDA 2M

NELDA – TR 040° (RDL 220 CTF VOR) fino a 23 NM CTF DME, quindi virare a sinistra fino a intercettare e seguire ARC 21 NM CTF DME, quindi intercettando RDL 255 CTF VOR virare a destra fino a intercettare e seguire RDL 264 CTF VOR (TR 084°) per il punto GIGIX, quindi CTF VOR da lasciare su RDL 078 CTF VOR (TR 078°) per il punto INDAX.

MEA: NELDA – INT ARC 21 NM CTF DME/RDL 226 CTF VOR: 6000 FT; INT ARC 21 NM CTF DME/RDL 226 CTF VOR – GIGIX – RDL 264/11 NM CTF VOR/DME: 5500 FT; RDL 264/11 NM CTF VOR/DME – CTF VOR/DME: 4000 FT; CTF VOR/DME – INDAX: 3000 FT

ERNAM 1M

ERNAM – TR 302° (RDL 122 CTF VOR) fino a 23 NM CTF DME, quindi virare a destra fino a intercettare e seguire ARC 21 NM CTF DME; intercettando RDL 085 CTF VOR virare a sinistra fino a intercettare e seguire RDL 078 CTF VOR (TR 258°) per il punto INDAX.

NOTA

La STAR si sviluppa parzialmente fuori spazio aereo controllato.

MEL/MEA: ERNAM – RDL 122/23 NM CTF VOR/DME: FL 100; RDL 122/23 NM CTF VOR/DME – INT ARC 21 NM CTF DME/RDL 085 CTF VOR: 6000 FT; INT ARC 21 NM CTF DME/RDL 085 CTF VOR – INDAX: 3000 FT

PIMOR 1M

PIMOR – TR 258° (RDL 078 CTF VOR) – INDAX.

COBBA 2M

COBBA – TR 144° (RDL 324 CTF VOR) until 23 NM CTF DME, then turn right until joining ARC 21 NM CTF DME, then intercepting RDL 273 CTF VOR turn left until joining RDL 264 CTF VOR (TR 084°) bound to GIGIX, then CTF VOR to be left on RDL 078 CTF VOR (TR 078°) bound to INDAX.

LIBRO 2M

LIBRO – TR 106° (RDL 286 CTF VOR) until 23 NM CTF DME, then turn right until joining ARC 21 NM CTF DME, then intercepting RDL 273 CTF VOR turn left until joining RDL 264 CTF VOR (TR 084°) bound to GIGIX, then CTF VOR to be left on RDL 078 CTF VOR (TR 078°) bound to INDAX.

NELDA 2M

NELDA – TR 040° (RDL 220 CTF VOR) until 23 NM CTF DME, then turn left until joining ARC 21 NM CTF DME, then intercepting RDL 255 CTF VOR turn right until joining RDL 264 CTF VOR (TR 084°) bound to GIGIX, then CTF VOR to be left on RDL 078 CTF VOR (TR 078°) bound to INDAX.

ERNAM 1M

ERNAM – TR 302° (RDL 122 CTF VOR) until 23 NM CTF DME, then turn right until joining ARC 21 NM CTF DME; intercepting RDL 085 CTF VOR turn left until joining RDL 078 CTF VOR (TR 258°) bound to INDAX.

REMARK

STAR is partially outside controlled airspace.

PIMOR 1M

PIMOR – TR 258° (RDL 078 CTF VOR) – INDAX.

MEA: PIMOR – INDAX: 3000 FT

NATOV 1M

NATOV - PEKOD – TR 200° (RDL 200 RCA VOR) fino a 35 NM RCA DME, quindi virare a destra fino a intercettare e seguire RDL 078 CTF VOR (TR 258°) per il punto INDAX.

NATOV 1M

NATOV - PEKOD – TR 200° (RDL 200 RCA VOR) until 35 NM RCA DME, then turn right until joining RDL 078 CTF VOR (TR 258°) bound to INDAX.

MEA: NATOV – RDL 200/30 NM RCA VOR/DME: 7000 FT; RDL 200/30 NM RCA VOR/DME – INDAX: 3000 FT

Intenzionalmente bianca

Intentionally left blank