

ICAO - INSTRUMENT APPROACH CHART

AD 2 LICC 5-11

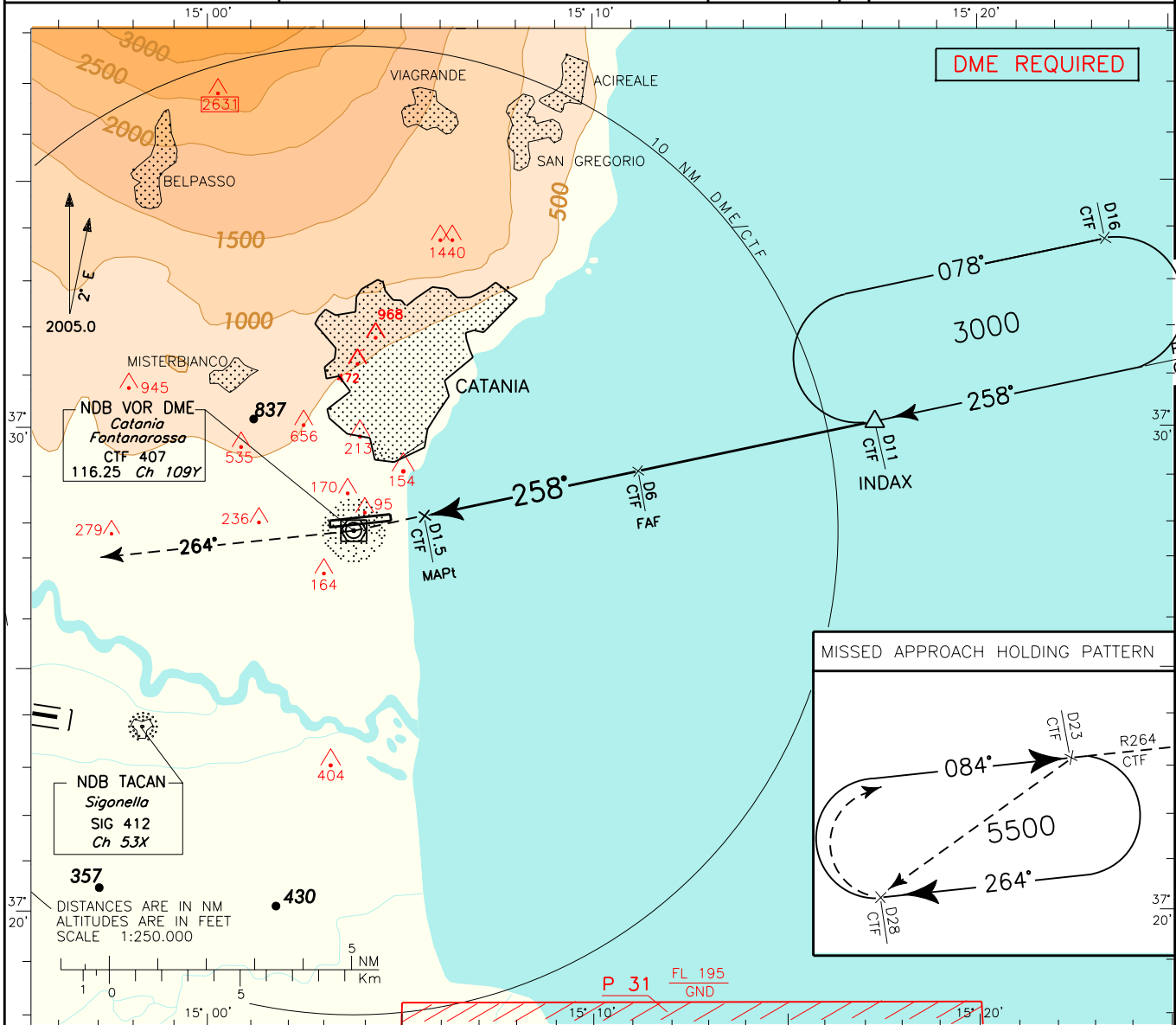
APP Catania Approach TWR Catania Tower
 119.25/123.30 118.70
 Catania Director Catania Ground
 120.80/123.30 129.725 (No DF)

AD ELEV
 39

LICCATANIA/FONTANAROSSA
 VOR - Y RWY 26

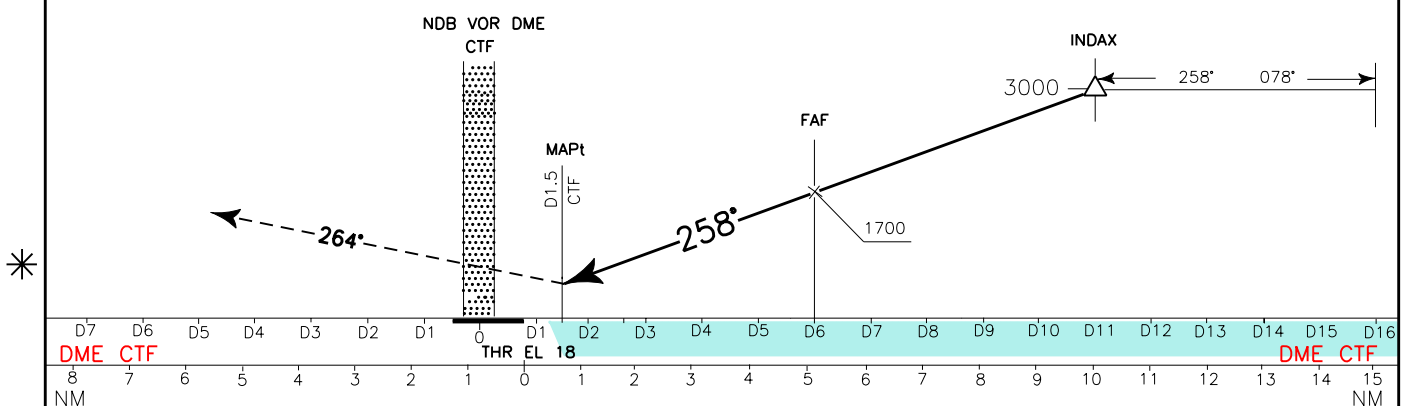
DOC.8168-ED.4-1993-AMD11

CHANGE: NEW AD SECTION



TRANSITION ALT 7000

MISSED APPROACH: Climb to 5500 FT and proceed to CTF VOR to leave on RDL 264 to holding pattern. Minimum climb gradient, due to obstacles and ATC reasons, 3.2% (195FT/NM). Hold between D23 CTF and D28, inbound TR 084° CTF, right turns.



OCA (OCH)	A	B	C	D
STRAIGHT IN APPROACH				
VOR - Y (M.A. 2.5%)	1250 (1240)			
VOR - Y (M.A. 3.2%)	630 (620)			
CIRCLING (1)	630 (600)	780 (750)	800 (770)	

(1) REMARK:
 Circling procedure allowed South of RWY only.

GS	FT PER MIN	
100	531	
120	637	
140	744	
160	850	
180	956	

