

ICAO - INSTRUMENT APPROACH CHART

AD 2 LICC 5-13

APP Catania Approach TWR Catania Tower
 119.25/123.30 118.70
 Catania Director Catania Ground
 120.80/123.30 129.725 (No DF)

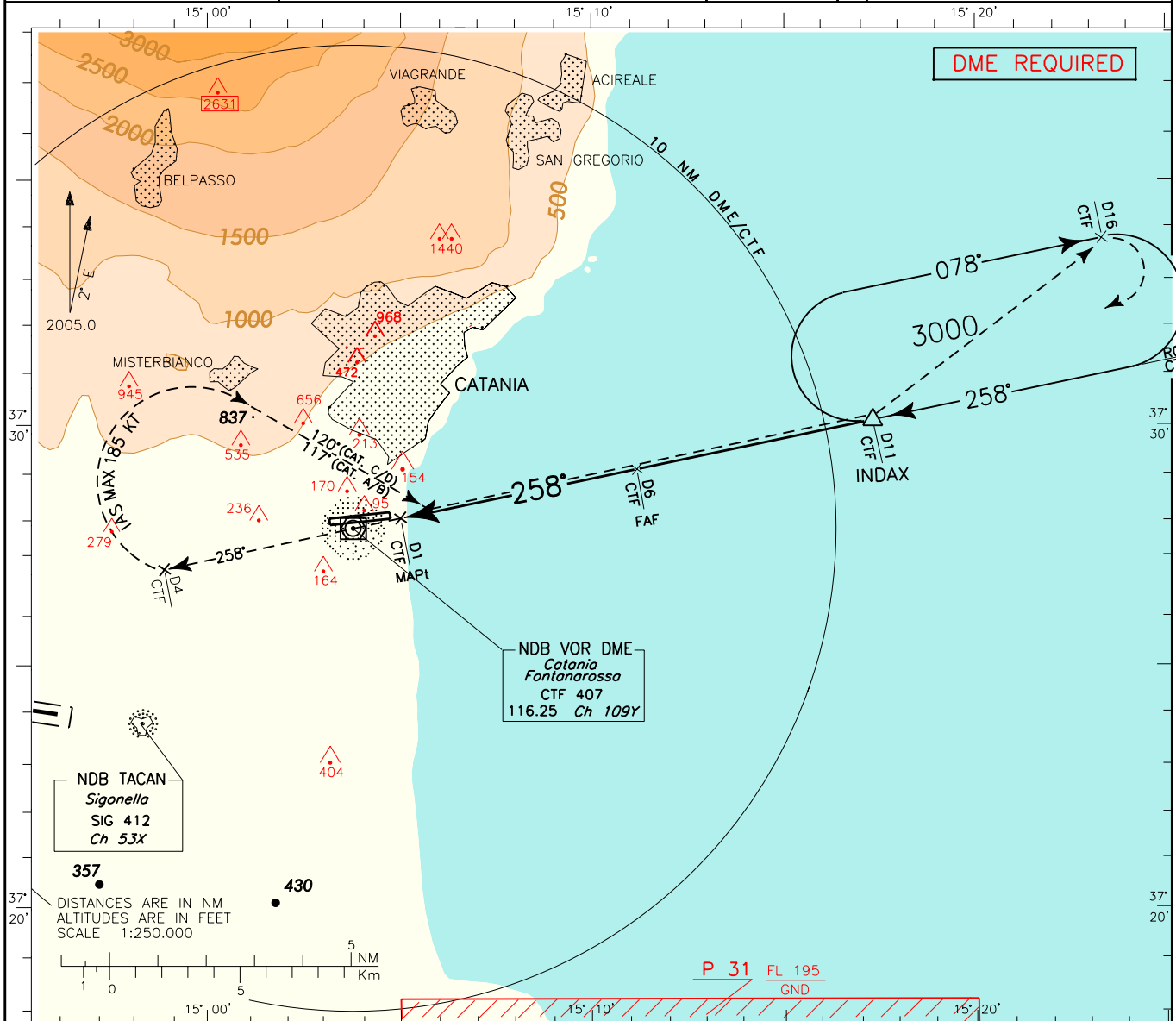
AD ELEV
39

L
 I
 C
 C

CATANIA/FONTANAROSSA
 VOR - W RWY 26

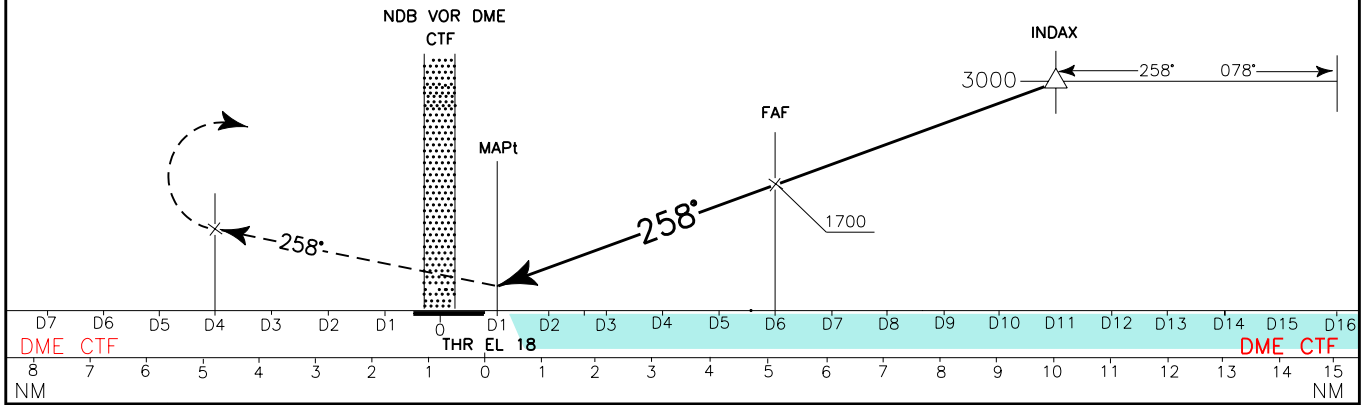
DOC.8168-ED.4-1993-AMD11

CHANGE: NEW AD SECTION



TRANSITION ALT 7000

MISSED APPROACH: Climb to 3000 FT and proceed on RDL 258 CTF VOR (TR258°). At D4 CTF DME turn right, TR 120° (TR 117° for ACFT CAT. A/B) to join RDL 078 to INDAX holding pattern, IAS MAX during right turn 185 KT.



OCA (OCH)		A	B	C	D
STRAIGHT IN APPROACH	VOR - W	630 (620)			
CIRCLING (1)		630 (600)	780 (750)	800 (770)	

(1) REMARK:
 Circling procedure allowed South of RWY only.

GS	FT PER MIN		
100	531		
120	637		
140	744		
160	850		
180	956		

