

ICAO - INSTRUMENT APPROACH CHART

AD 2 LICC 5-17

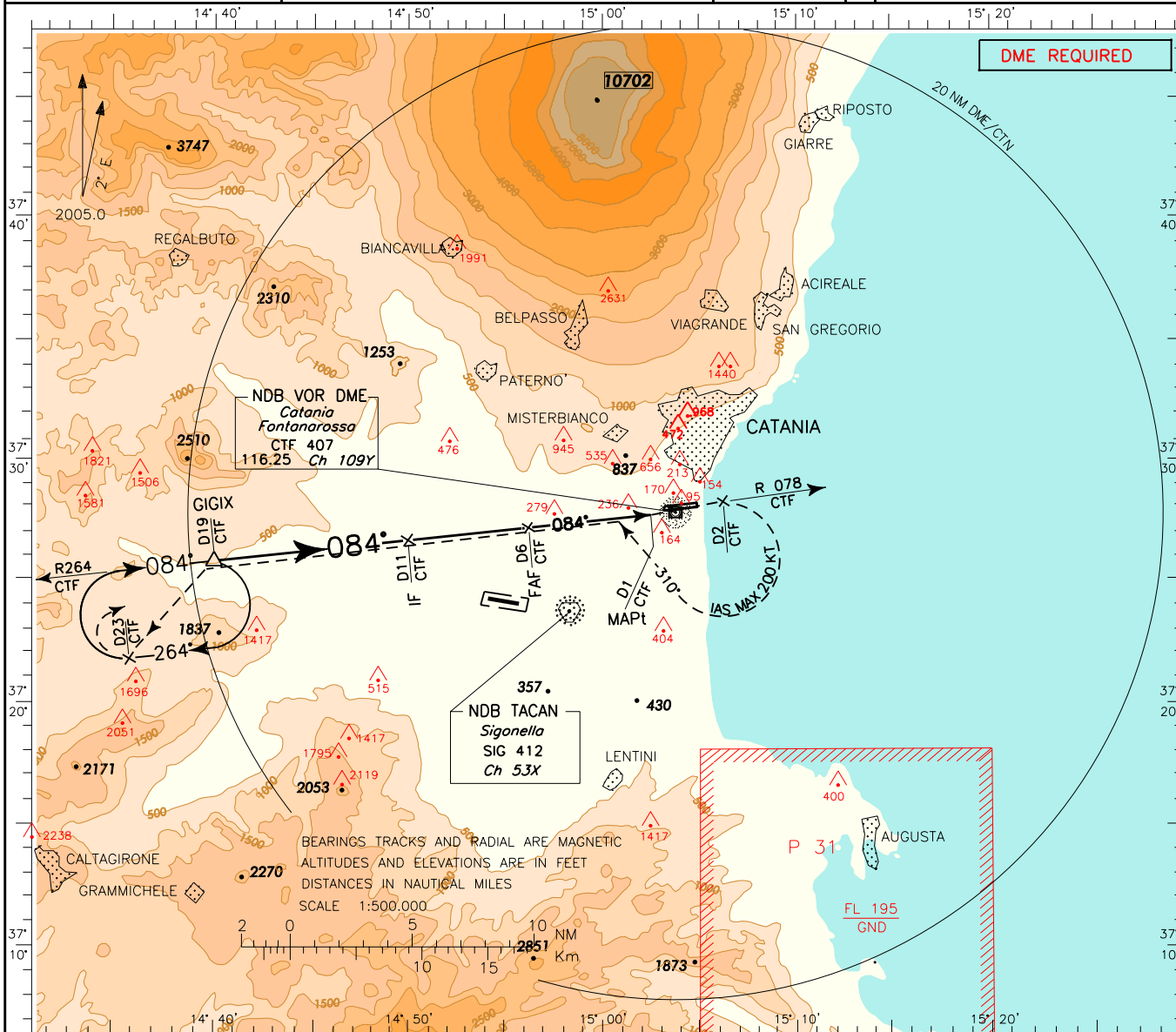
DOC.8168-ED.4-1993-AMD11

CHANGE: NEW AD SECTION

APP *Catania Approach* TWR *Catania Tower*
 119.25/123.30 118.70
Catania Director
 120.80/123.30 129,725 (No DF)

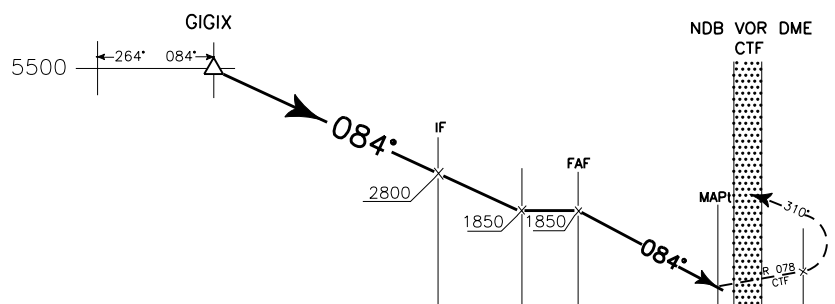
AD ELEV
39

LICC CATANIA/FONTANAROSSA
CONTINGENCY
 VOR - Y RWY 08



TRANSITION ALT 7000

MISSED APPROACH: As soon as practicable, join RDL 078 CTF VOR and climb to 5500FT (Minimum climb gradient 3.2%-195FT/NM). At D2 CTF DME, turn right TR310° to join and follow RDL 264 CTF VOR to holding pattern. IAS MAX during right turn 200KT.



29	28	27	26	25	24	23	22	21	20	19	18	17	16	15	14	13	12	11	10	9	8	7	6	5	4	3	2	1	0	1	2	3	4	5	6	7	8	9	10	11	12	13	14	15	16					
CTF DME																	THR ELEV 38																	CTF DME																
NM																	NM																	NM																

OCA (OCH)		A	B	C	D
STRAIGHT IN APPROACH	VOR - Y M.A. 2.5%	1250 (1220)			
	VOR - Y M.A. 3.2%	650 (620)			
CIRCLING (1)		650 (620)	780 (750)	800 (770)	

(1) REMARK:
 Circling procedure allowed South of RWY only.

NOT ALLOWED

GS	FT PER MIN
100	531
120	637
140	744
160	850
180	956

