

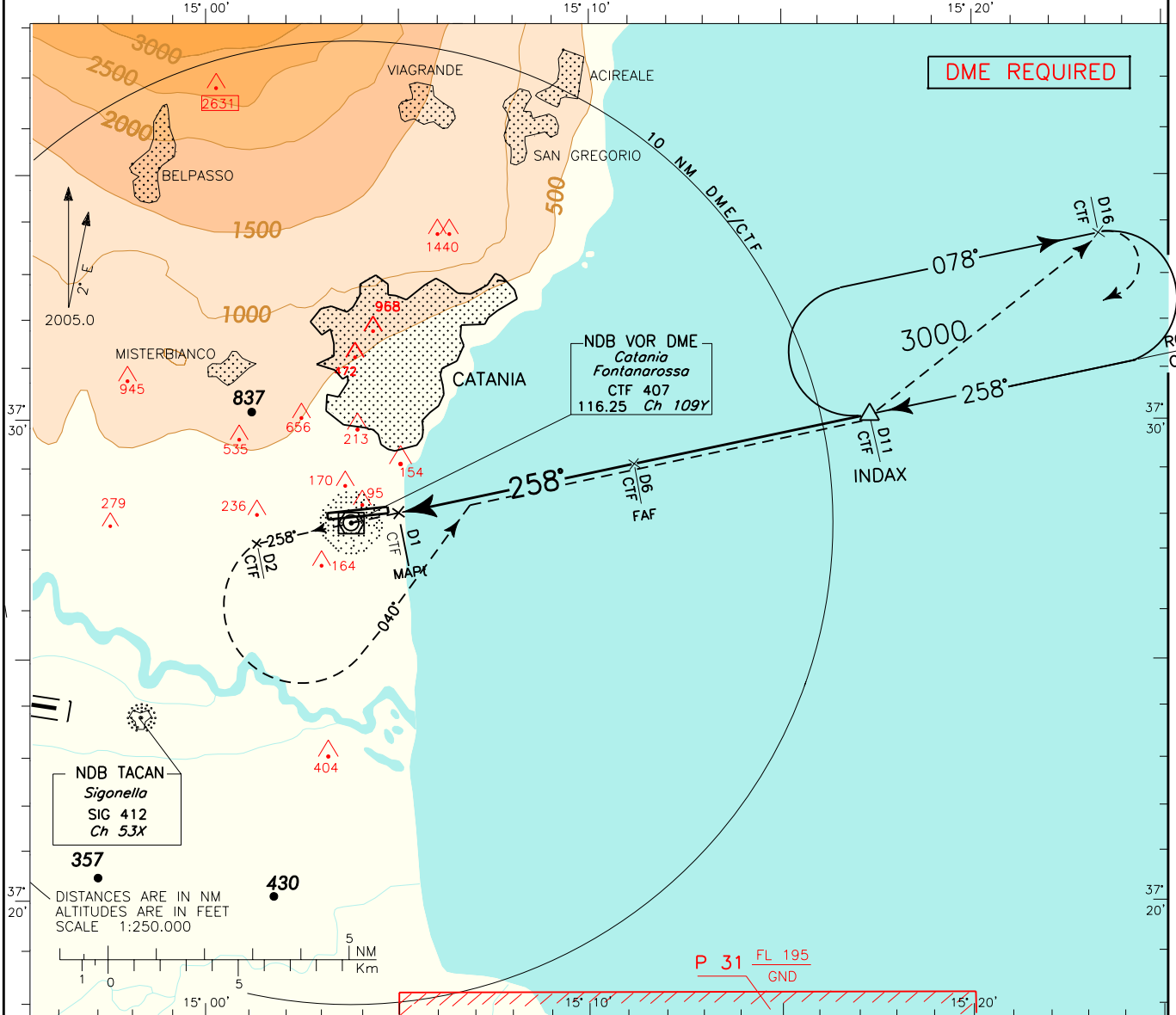
ICAO - INSTRUMENT APPROACH CHART

AD 2 LICC 5-19

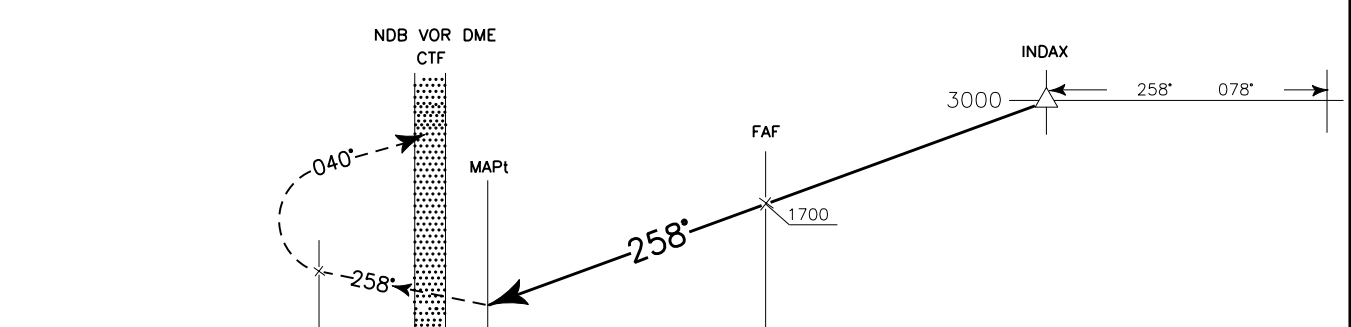
DOC.8168-ED.4-1993-AMD11

CHANGE: NEW AD SECTION

| | | | |
|--|--|---------|--|
| APP <i>Catania Approach</i> | TWR <i>Catania Tower</i> | AD ELEV | LICC CATANIA/FONTANAROSSA CONTINGENCY VOR - X RWY 26 |
| 119.25/123.30 | 118.70 | 39 | |
| <i>Catania Director</i> 120.80/123.30 | <i>Catania Ground</i> 129,725 (No DF) | | |



TRANSITION ALT 7000 MISSED APPROACH: Climb to 3000 FT and proceed on RDL 258 CTF VOR (TR258°); at D2 CTF DME turn left, TR 040°, to join and follow RDL 078 CTF VOR bound INDAX holding pattern.



| | | | | | | | | | | | | | | | | | | | | | | | |
|---------|----|----|----|----|----|----|---|----|----|----|---------|----|----|----|----|----|-----|-----|-----|-----|-----|-----|-----|
| D7 | D6 | D5 | D4 | D3 | D2 | D1 | 0 | D1 | D2 | D3 | D4 | D5 | D6 | D7 | D8 | D9 | D10 | D11 | D12 | D13 | D14 | D15 | D16 |
| DME CTF | | | | | | | | | | | DME CTF | | | | | | | | | | | | |
| NM | | | | | | | | | | | NM | | | | | | | | | | | | |

| | | | | |
|----------------------|-----------|-----------|-----------|---|
| OCA (OCH) | A | B | C | D |
| STRAIGHT IN APPROACH | VOR - X | 630 (620) | | |
| CIRCLING (1) | 630 (600) | 780 (750) | 800 (770) | |

(1) REMARK:
Circling procedure allowed South of RWY only.

| GS | FT PER MIN |
|-----|------------|
| 100 | 531 |
| 120 | 637 |
| 140 | 744 |
| 160 | 850 |
| 180 | 956 |

