



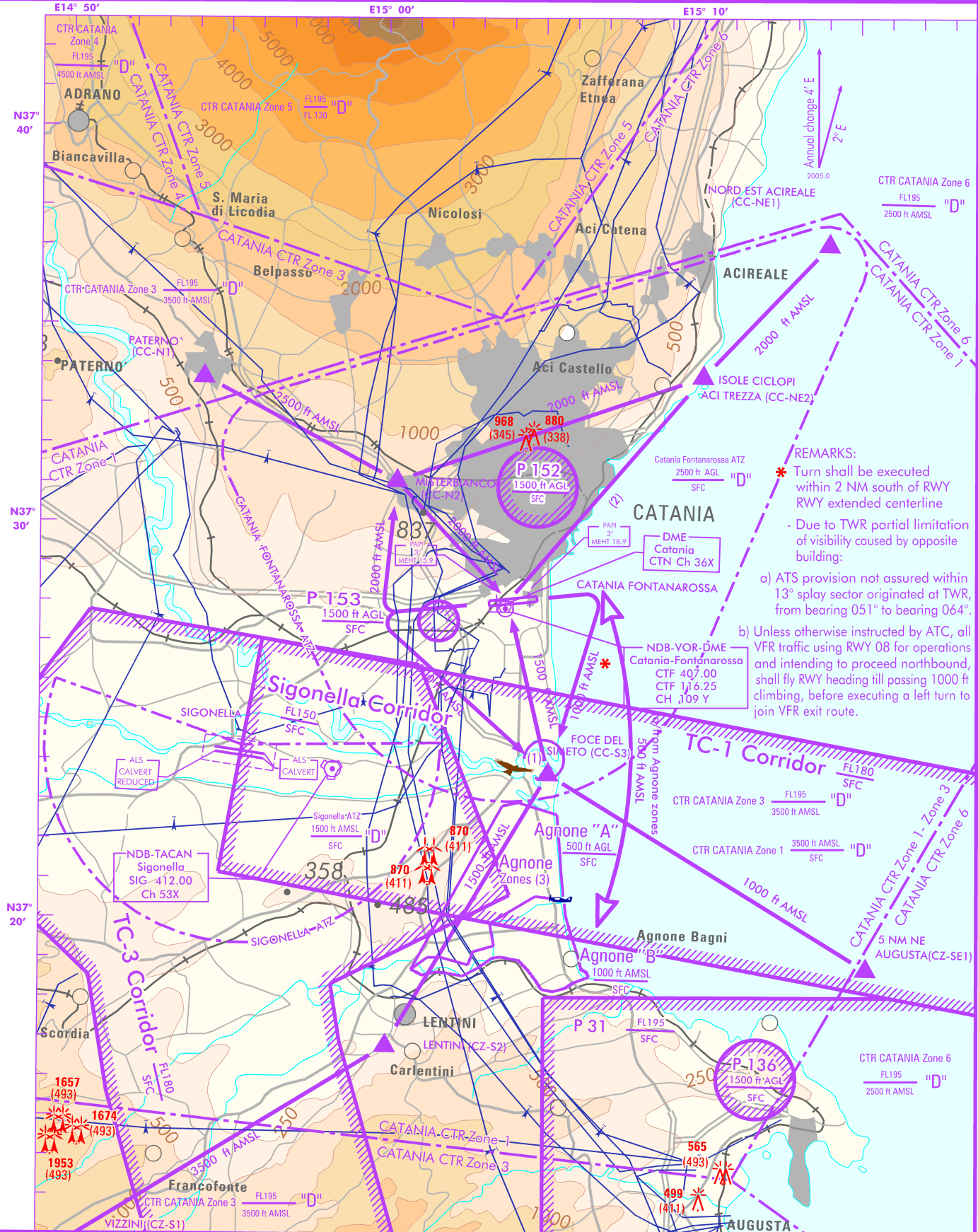
FIS	Roma Info	125.750
APP	Catania Approach	119.250
TWR	Catania Tower	118.700
	Catania Ground	129.725

AD ELEV
39

L
I
C
C

CATANIA / FONTANAROSSA

CHANGE: FIS FREQ AND CATANIA CTR ZONE 6 VERTICAL LIMITS



REMARKS:

- * Turn shall be executed within 2 NM south of RWY RWY extended centerline
- Due to TWR partial limitation of visibility caused by opposite building:

a) ATS provision not assured within 13° splay sector originated at TWR, from bearing 051° to bearing 064°.

b) Unless otherwise instructed by ATC, all VFR traffic using RWY 08 for operations and intending to proceed northbound, shall fly RWY heading till passing 1000 ft climbing, before executing a left turn to join VFR exit route.

AIRSPACE CLASSIFICATION (See AIP-Italia ENR 1.4)

- (1) Protected area SFC / 500 ft AGL See ENR 5.6.1.15-1
- (2) VFR ROUTE Isole Ciclopi Acitrezza - Catania AD shall be flown at 2000 ft AMSL only. If unable TFC will be rerouted via Misterbianco.
- (3) Aerial work areas (See AIP-Italia ENR 5.5.3.4-1)

TRANSITION ALT 7000 ft
Bearings are magnetic.
ELEV and ALT in ft.