

ICAO - INSTRUMENT APPROACH CHART

AD 2 LICC 5-5

APP Catania Approach TWR Catania Tower
 119.25/123.30 118.70
 Catania Director Catania Ground
 120.80/123.30 129.725 (No DF)

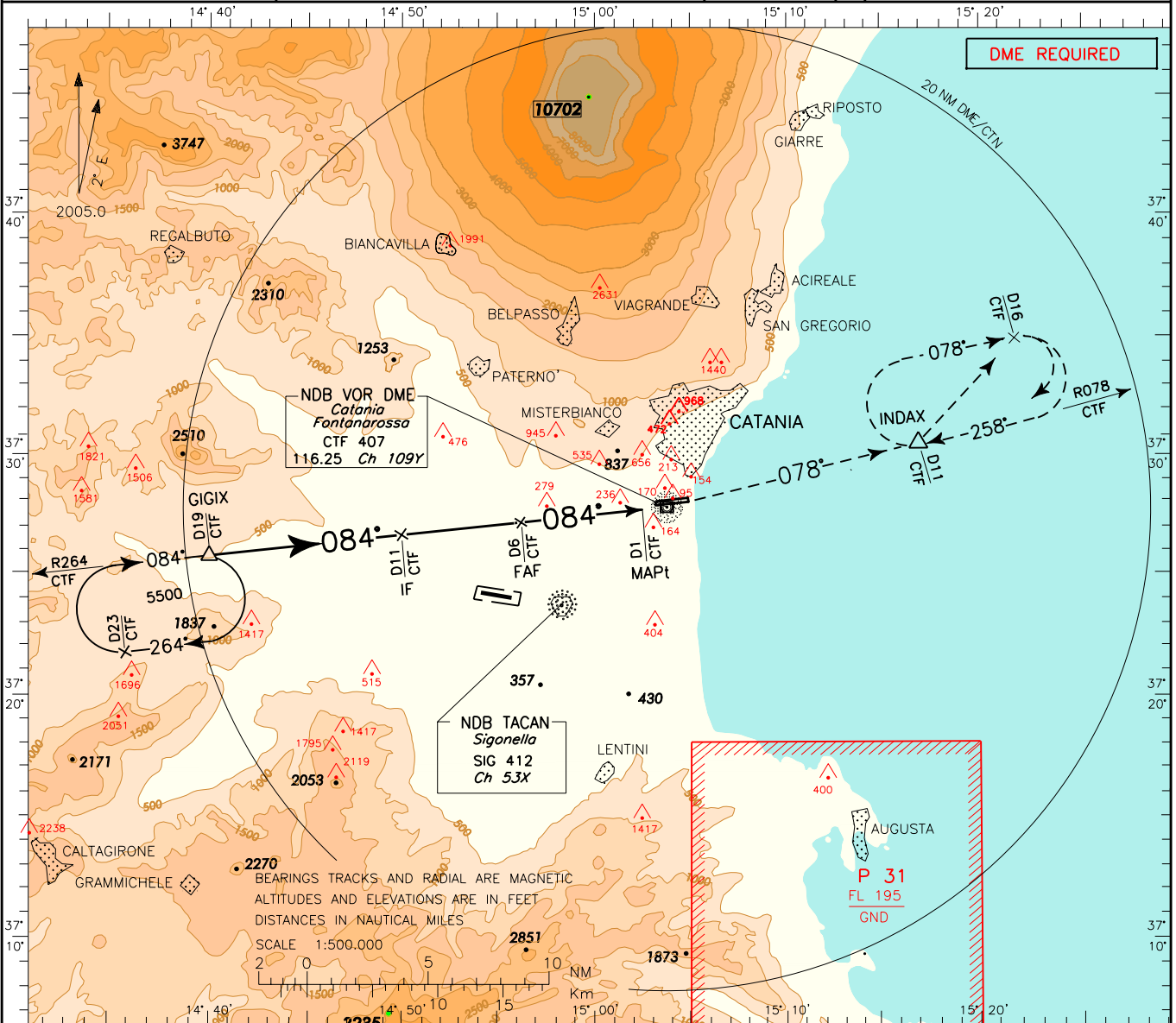
AD ELEV
 39

L
I
C
C

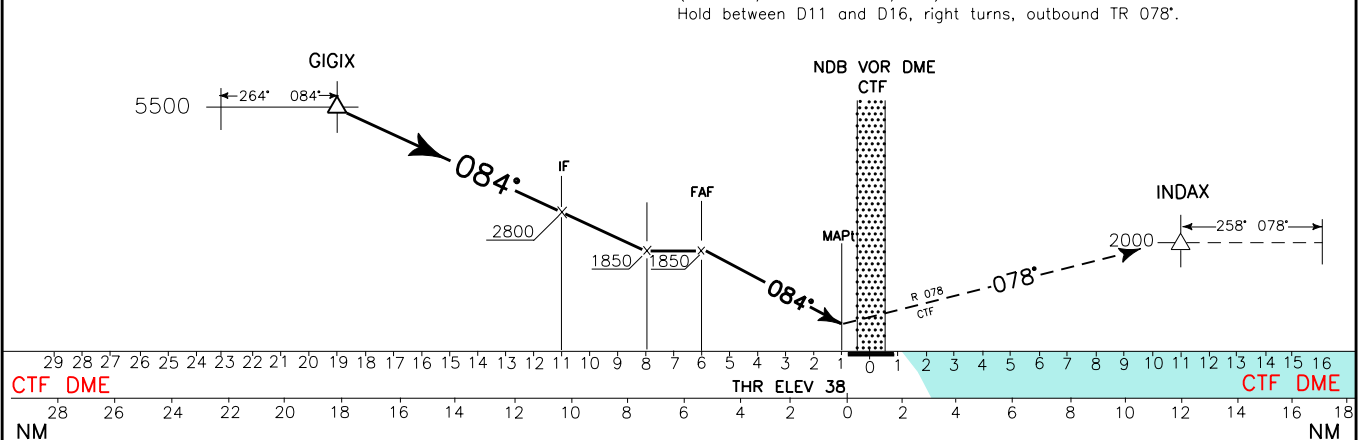
CATANIA/FONTANAROSSA
 VOR - Z RWY 08

DOC.8168-ED.4-1993-AMD11

CHANGE: NEW AD SECTION



TRANSITION ALT 7000 MISSED APPROACH: As soon as practicable, join RDL 078 and climb to 2000FT to INDAX (RDL 078/11NM CTF VOR/DME). Hold between D11 and D16, right turns, outbound TR 078°.



OCA (OCH)		A	B	C	D	(1) REMARK: Circling procedure allowed South of RWY only. 	GS	FT PER MIN	MMN SECT ALT	
STRAIGHT IN APPROACH	VOR - Z	650 (620)					100	531	NDB VOR CTF	
	CIRCLING (1)		650 (620)	780 (750)	800 (770)		120	637		
							140	744		
						160	850			
						180	956			