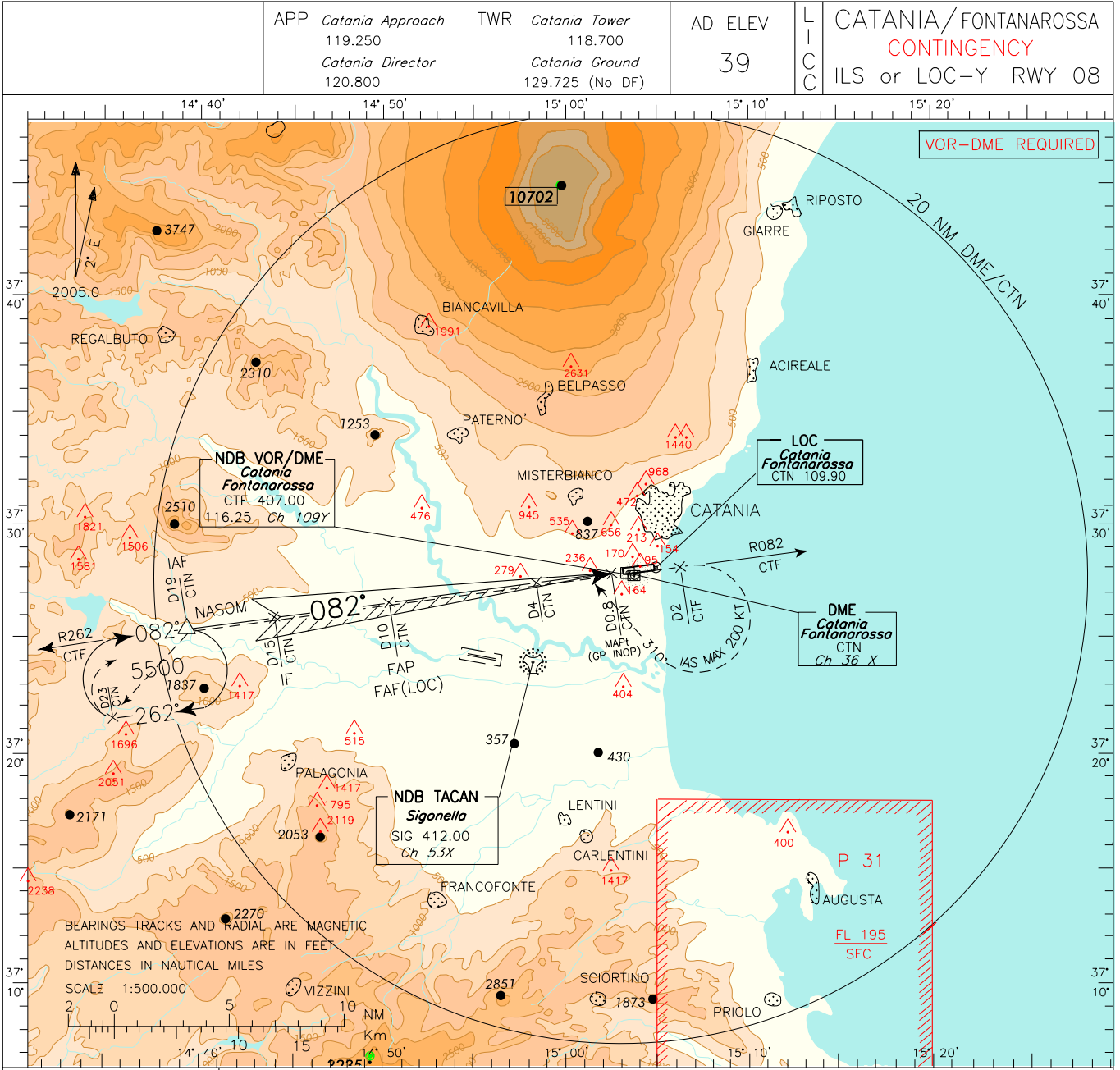
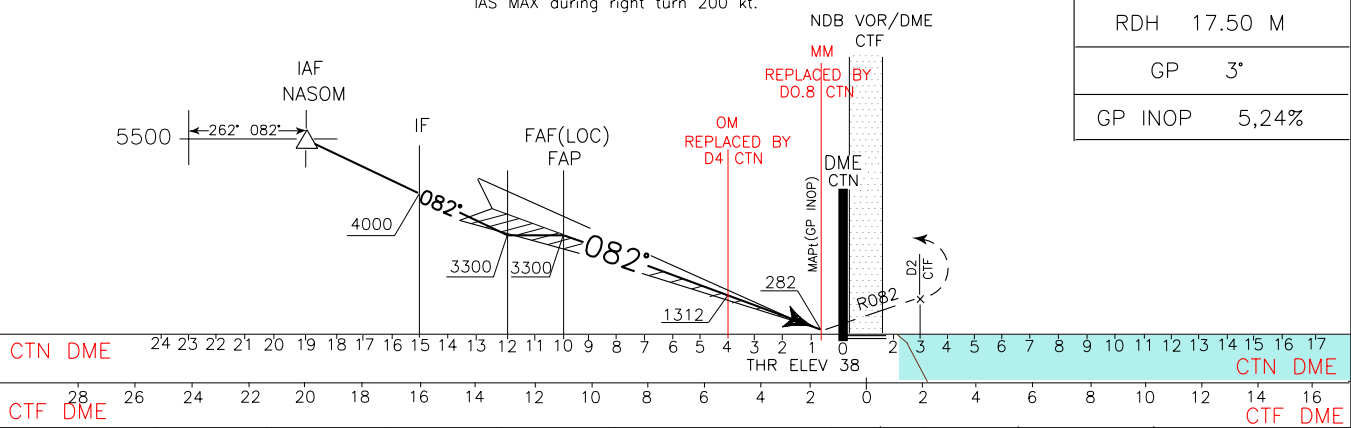


DOC.8168-ED.4-1993-AMDT 11
CHANGE: RENAMED PROCEDURE. IF, FAP AND FAF(LOC) MNM ALT



TRANSITION ALT 7000 MISSED APPROACH: Maintaining TR 082° climb to 5500 ft (MNM climb gradient 3.2%—195 ft/NM) and at D2 CTF DME, turn right TR 310° to join and follow RDL 262 CTF VORDME to holding pattern. IAS MAX during right turn 200 kt.



RDH	17.50 M
GP	3°
GP INOP	5,24%

CTN DME		24	23	22	21	20	19	18	17	16	15	14	13	12	11	10	9	8	7	6	5	4	3	2	1	0	1	2	3	4	5	6	7	8	9	10	11	12	13	14	15	16	17	CTN DME				
CTF DME		28	26	24	22	20	18	16	14	12	10	8	6	4	2	0	2	4	6	8	10	12	14	16	18	20	22	24	26	28	30	32	34	36	38	40	42	44	46	48	50	52	54	56	58	60	CTF DME	
STRAIGHT IN APPROACH	OCA (OCH)	A	B	C	D	(1) REMARK: Circling procedure allowed South of RWY only.		GS	FT PER MIN					MNM SECT ALT CTF NDB VOR																																		
	ILS-Y M.A. 3.2%	268 (230)	278 (240)	288 (250)	298 (260)			100	531																																							
	ILS-Y M.A. 2.5%	1250 (1212)						120	637																																							
	LOC M.A. 3.2%	650 (620)						140	744																																							
	LOC M.A. 2.5%	1250 (1220)						160	850																																							
CIRCLING (1)	650 (620)		780 (750)	800 (770)	180	956																																										