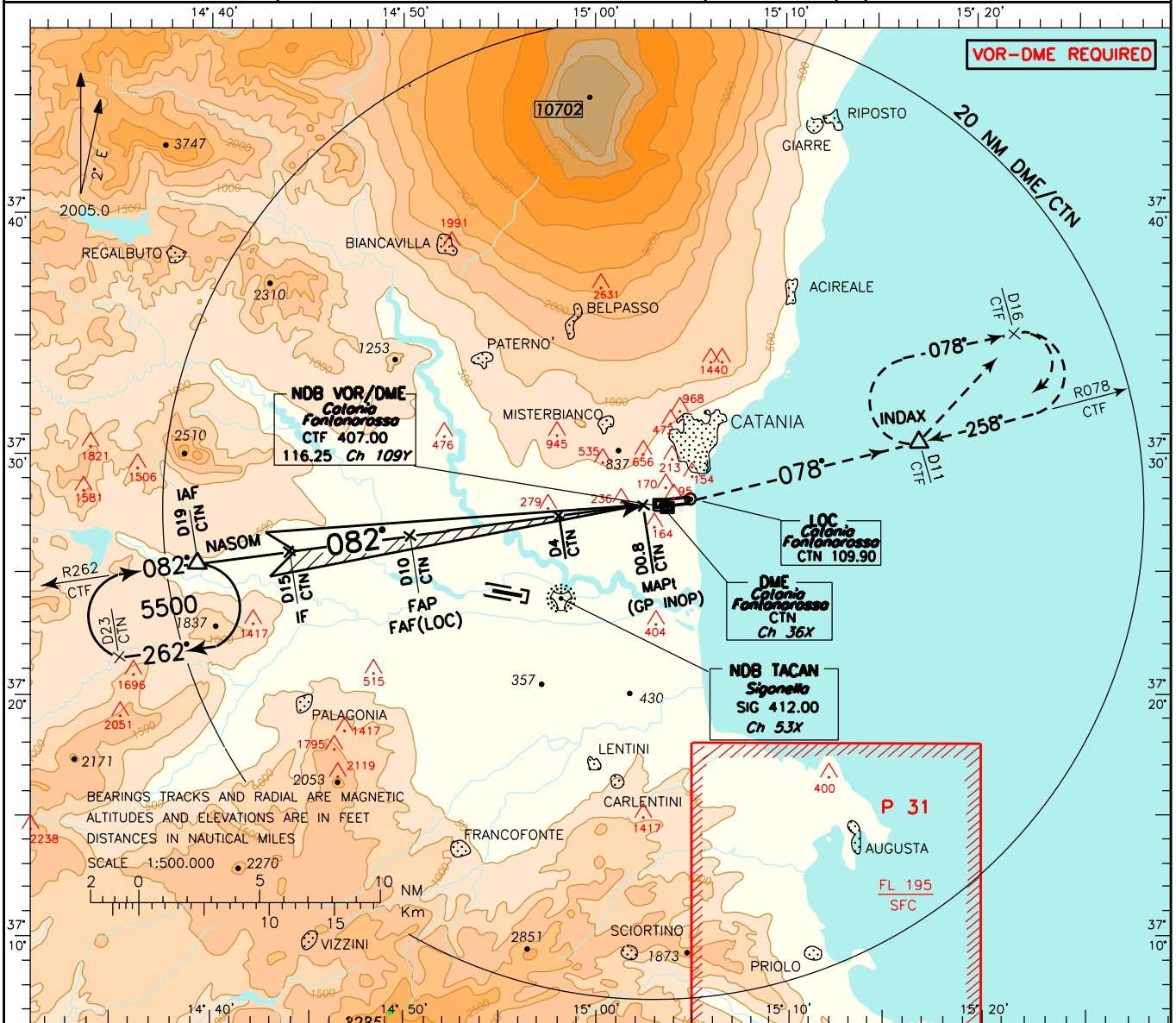


APP *Catania Approach* TWR *Catania Tower*
 119.250 118.700
Catania Director *Catania Ground*
 120.800 129.725 (No DF)

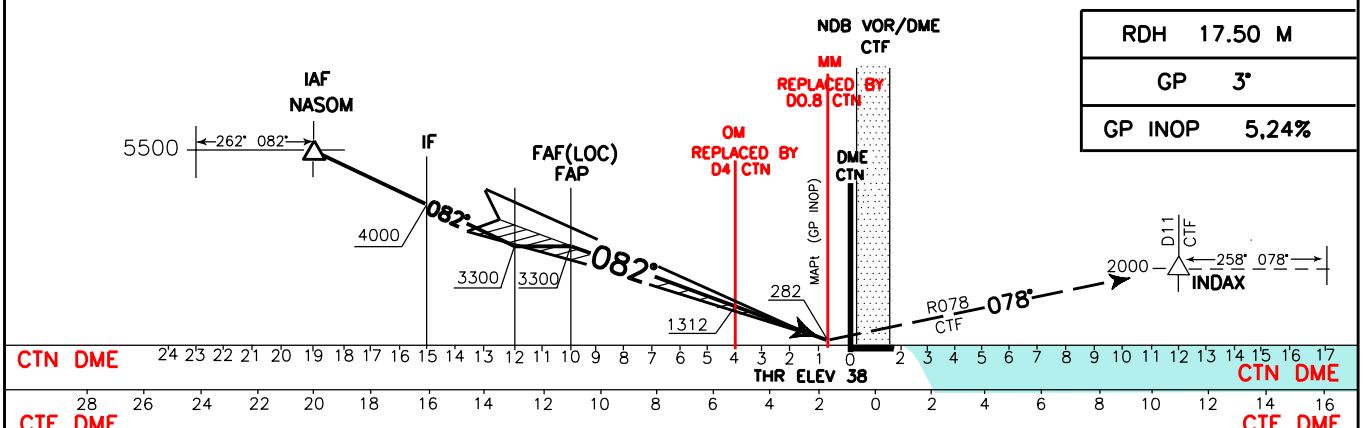
AD ELEV
39

LICC
CATANIA/FONTANAROSSA
 ILS or LOC-Z RWY 08

DOC.8168-ED.4-1993-AMDT 11
 CHANGE: RENAMED PROCEDURE IF, FAP AND FAF(LOC) MNM ALT



TRANSITION ALT 7000 MISSED APPROACH: AS soon as practicable join RDL 078 CTF and climb to 2000 ft, to INDAX (RDL 078/11NM CTF VORDME) Hold between D11 and D16, right turns, outbound TR 078°.



RDH	17.50 M
GP	3'
GP INOP	5,24%

CTN DME	24	23	22	21	20	19	18	17	16	15	14	13	12	11	10	9	8	7	6	5	4	3	2	1	0	1	2	3	4	5	6	7	8	9	10	11	12	13	14	15	16	17	CTN DME
CTF DME	28	26	24	22	20	18	16	14	12	10	8	6	4	2	0	2	4	6	8	10	12	14	16	CTF DME																			
OCA (OCH)	A	B	C	D																																							
STRAIGHT IN APPROACH	ILS - Z	268 (230)	278 (240)	288 (250)	298 (260)																																						
	LOC	650 (620)																																									
CIRCLING (1)	650 (620)		780 (750)		800 (770)																																						
	(1) REMARK: Circling procedure allowed South of RWY only.	GS	FT PER MIN																																								
		100	531																																								
		120	637																																								
		140	744																																								
		160	850																																								
		180	956																																								
				MNM SECT ALT																																							
				CTF		NDB VOR																																					
				13300		2400																																					