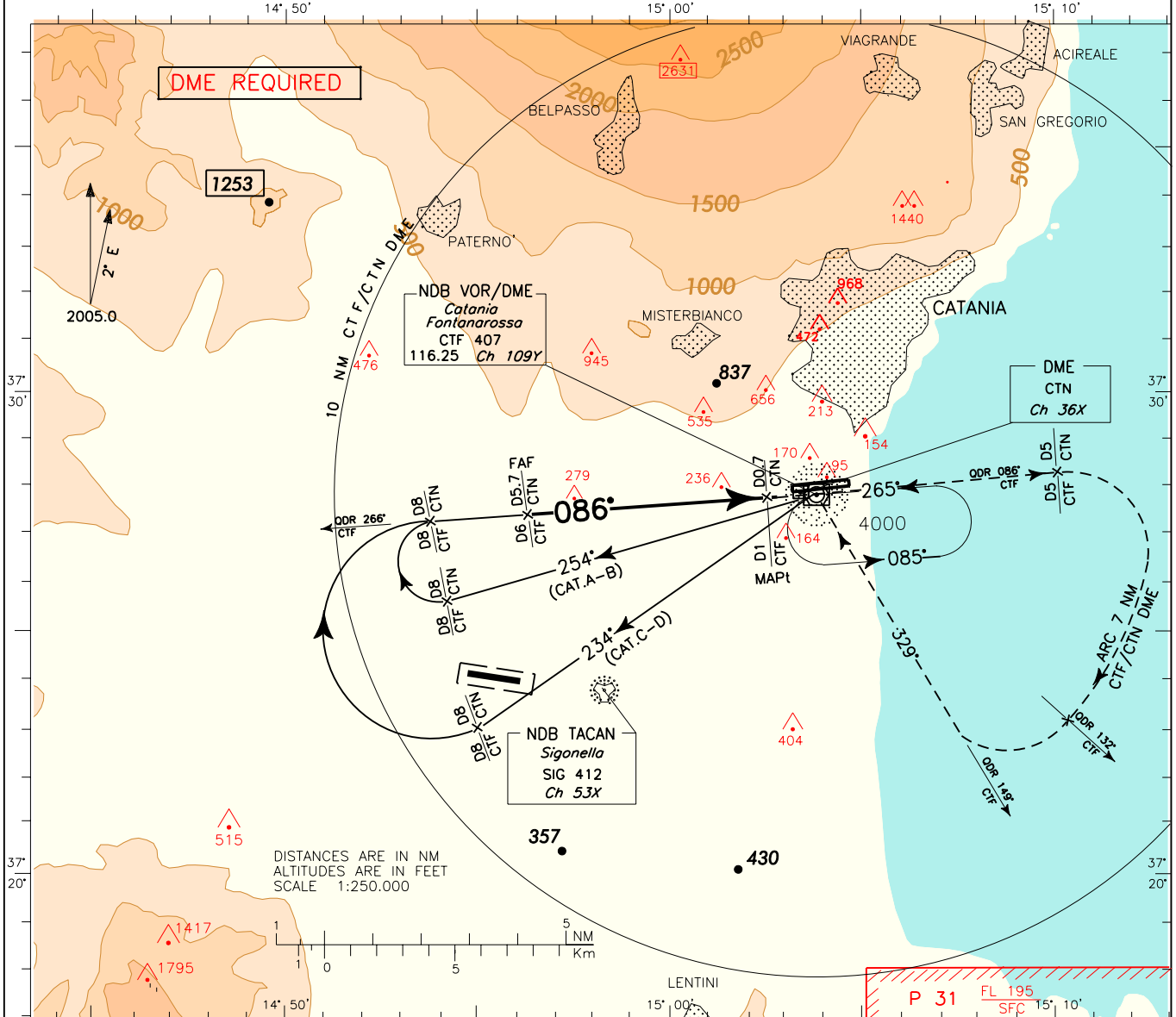
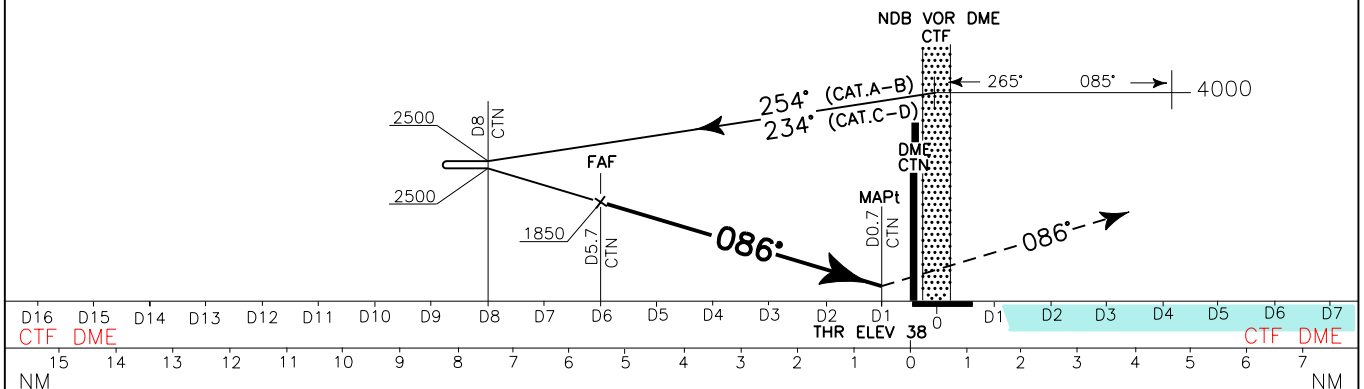


APP <i>Catania Approach</i> 119.250/123.300 <i>Catania Director</i> 120.800/123.300	TWR <i>Catania Tower</i> 118.700 <i>Catania Ground</i> 129.725 (No DF)	AD ELEV 39	L I C C CATANIA/FONTANAROSSA NDB RWY 08
--	---	---------------	---

DOC.8168-ED.4-1993-AMD11
CHANGE: IDENTIFICATION POINTS WITH DOUBLE DME READING



TRANSITION ALT 7000
 MISSED APPROACH: At 1 NM CTF DME (or 0.7 NM CTN DME) climb to 3000 ft and proceed on TR 086°. At 5 NM CTF (or CTN) DME turn right to join and follow 7 NM ARC CTF (or CTN) DME and crossing QDR 132° turn right to CTF NDB holding pattern (TR 329°).



D16	D15	D14	D13	D12	D11	D10	D9	D8	D7	D6	D5	D4	D3	D2	D1	D1	D2	D3	D4	D5	D6	D7									
CTF DME																THR ELEV 38						CTF DME									
NM																															
OCA (OCH)		A		B		C		D		(1) REMARK: Circling procedure allowed South of RWY only. 												GS		FT PER MIN		MNM SECT ALT					
STRAIGHT IN APPROACH		NDB		700 (670)																		80		425		CTF		NDB			
CIRCLING (1)		700 (670)		780 (750)		800 (770)																100		531		120		637		2400	
																						140		744		160		850		5800	
										180		956																			