

ICAO – INSTRUMENT APPROACH CHART

AD 2 LICC 5-9

APP Catania Approach  
119.250/123.300  
Catania Director  
120.800/123.300

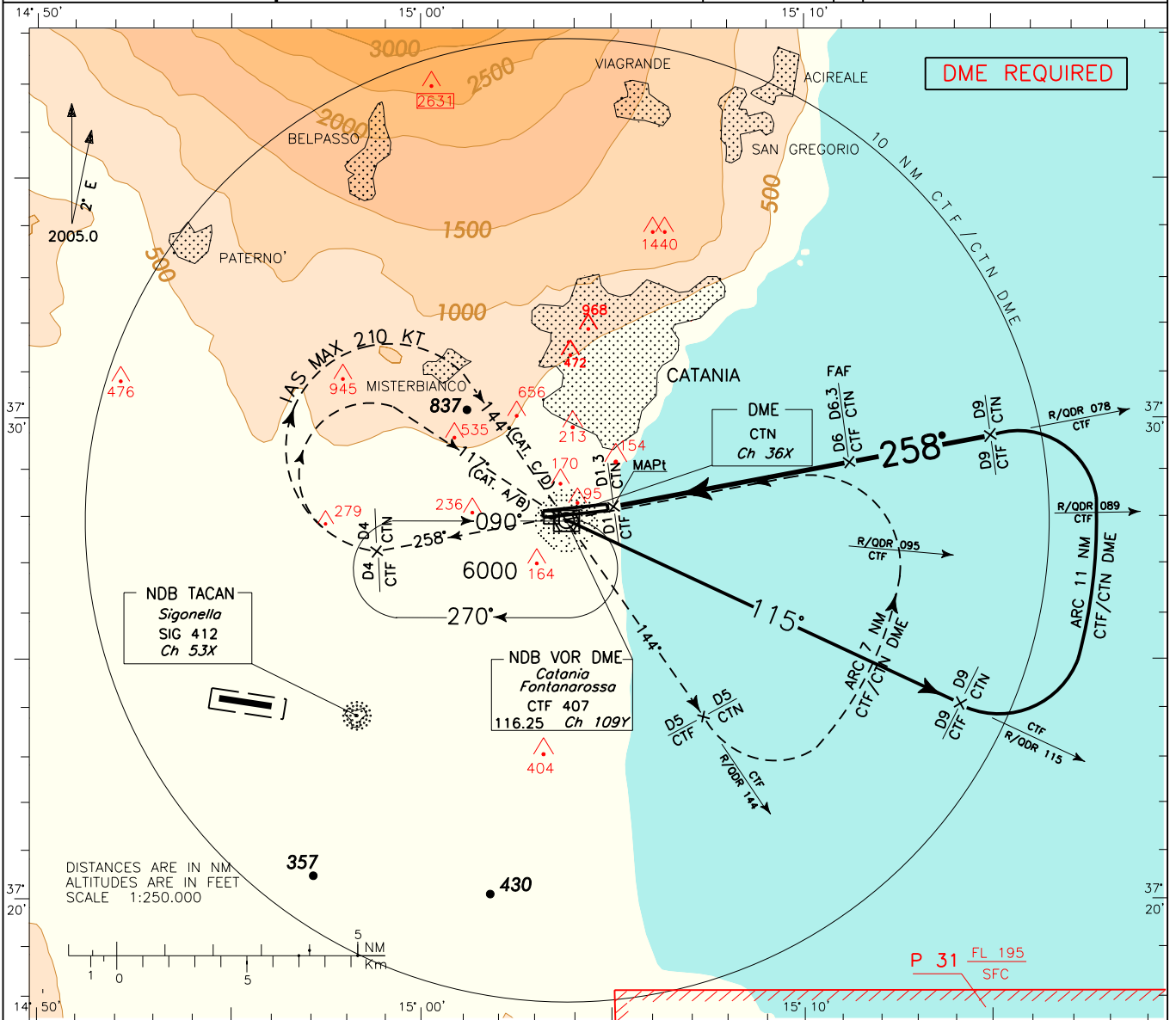
TWR Catania Tower  
118.700  
Catania Ground  
129.725 (No DF)

AD ELEV  
39

L I C C  
CATANIA/FONTANAROSSA  
VOR - Z or NDB  
RWY 26

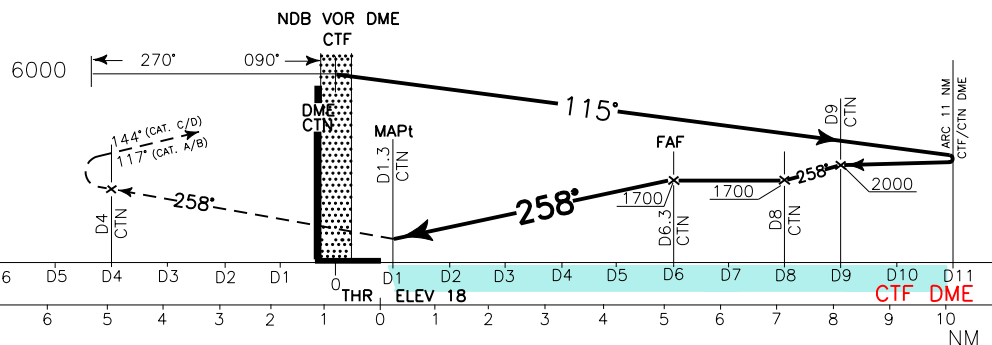
DOC.8168-ED.4-1993-AMD11

CHANGE: IDENTIFICATION POINTS WITH DOUBLE DME READING



TRANSITION ALT 7000

MISSED APPROACH: Climb to 5000 ft and proceed on TR 258°. At 4 NM CTF (or CTN) DME turn right TR 144° (TR 117° for ACFT Cat. A and B) to CTF VOR/NDB, IAS MAX 210 kt. Leave CTF VOR/NDB on R/QDR 144 and at 5 NM CTF (or CTN) DME turn left to join and follow 7 NM ARC CTF (or CTN) DME. Crossing R/QDR 095 turn left to join and follow R/QDR 078 to holding pattern.



D12	D11	D10	D9	D8	D7	D6	D5	D4	D3	D2	D1	0	D1	D2	D3	D4	D5	D6	D7	D8	D9	D10	D11
CTF DME												CTF DME											
NM																							

OCA (OCH)		A	B	C	D
STRAIGHT IN APPROACH	VOR - Z	630 (620)			
	NDB				
CIRCLING (1)		630 (600)	780 (750)	800 (770)	

(1) REMARK:  
Circling procedure allowed South of RWY only.

GS	FT PER MIN
100	531
120	637
140	744
160	850
180	956

