

STARs

RWY 08/26

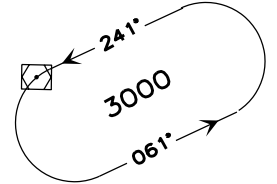
LAMPEDUSA

TRANSITION ALT 3000

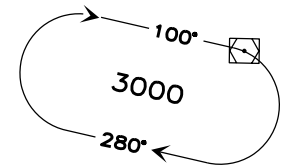
FREQUENCIES

ACC	Malta Control	130.975
(AFIS)	Lampedusa Aerodrome Info	123.500

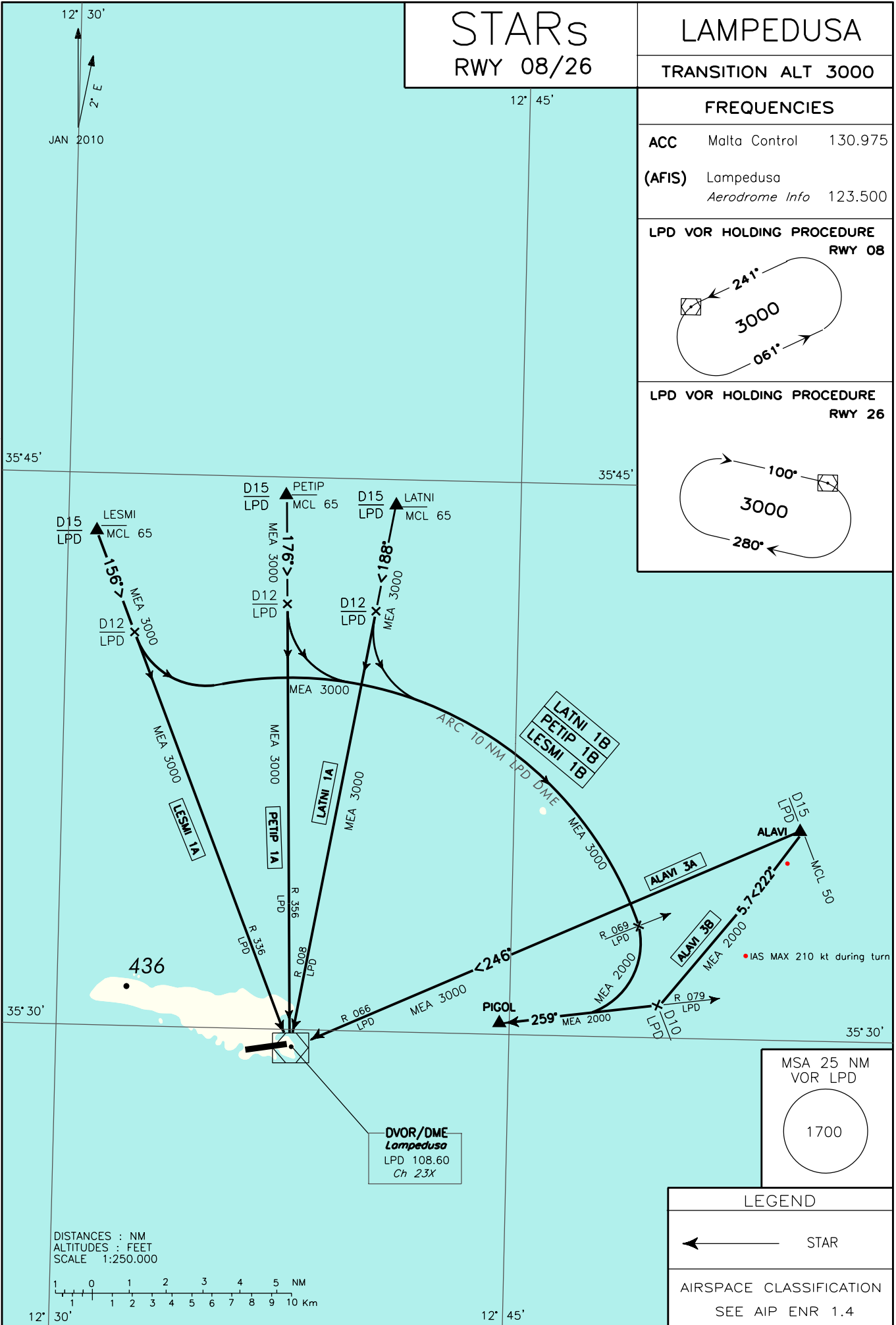
LPD VOR HOLDING PROCEDURE RWY 08



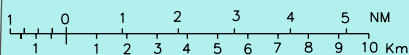
LPD VOR HOLDING PROCEDURE RWY 26



CHANGE: MAGNETIC VARIATION UPDATED and STARs "ALAVI 3A/3B" MODIFIED



DISTANCES : NM
ALTITUDES : FEET
SCALE 1:250.000



LEGEND

← STAR

AIRSPACE CLASSIFICATION
SEE AIP ENR 1.4

LESMI 1A

LESMI – TR 156° (RDL 336 LPD VOR) fino a LPD VOR/DME.

LESMI 1A

LESMI – TR 156° (RDL 336 LPD VOR) bound to LPD VOR/DME.

MEA: LESMI (MCL 65) – LPD VOR/DME: 3000 FT

LESMI 1B

LESMI – TR 156° (RDL 336 LPD VOR) fino a 12 NM LPD DME, quindi virare a sinistra fino ad intercettare e seguire ARC 10 NM LPD DME; attraversando RDL 069 LPD VOR virare a destra su TR 259° (RDL 079 LPD VOR) fino al punto PIGOL.

LESMI 1B

LESMI – TR 156° (RDL 336 LPD VOR) until 12 NM LPD DME, then turn left until joining ARC10 NM LPD DME; crossing RDL 069 LPD VOR turn right on TR 259° (RDL 079 LPD VOR) bound to PIGOL.

MEA: LESMI(MCL 65) – INT ARC 10 NM LPD DME/RDL 069 LPD VOR: 3000 FT; INT ARC 10 NM LPD DME/RDL 069 LPD VOR – PIGOL: 2000 FT

PETIP 1A

PETIP – TR 176° (RDL 356 LPD VOR), fino a LPD VOR/DME.

PETIP 1A

PETIP – TR 176° (RDL 356 LPD VOR) bound to LPD VOR/DME.

MEA: PETIP (MCL 65) – LPD VOR/DME: 3000 FT

PETIP 1B

PETIP – TR 176° (RDL 356 LPD VOR) fino a 12 NM LPD DME, quindi virare a sinistra fino ad intercettare e seguire ARC 10 NM LPD DME; attraversando RDL 069 LPD VOR virare a destra su TR 259° (RDL 079 LPD VOR) fino al punto PIGOL.

PETIP 1B

PETIP – TR 176° (RDL 356 LPD VOR) until 12 NM LPD DME, then turn left until joining ARC10 NM LPD DME; crossing RDL 069 LPD VOR turn right on TR 259° (RDL 079 LPD VOR) bound to PIGOL.

MEA: PETIP (MCL 65) – INT ARC 10 NM LPD DME/RDL 069 LPD VOR: 3000 FT; INT ARC 10 NM LPD DME/RDL 069 LPD VOR – PIGOL: 2000 FT

LATNI 1A

LATNI – TR 188° (RDL 008 LPD VOR) fino a LPD VOR/DME.

LATNI 1A

LATNI – TR 188° (RDL 008 LPD VOR) bound to LPD VOR/DME.

MEA: LATNI (MCL 65) – LPD VOR/DME: 3000 FT

LATNI 1B

LATNI – TR 188° (RDL 008 LPD VOR) fino a 12 NM LPD DME, quindi virare a sinistra fino ad intercettare e seguire ARC 10 NM LPD DME; attraversando RDL 069 LPD VOR virare a destra su TR 259° (RDL 079 LPD VOR) fino al punto PIGOL.

LATNI 1B

LATNI – TR 188° (RDL 008 LPD VOR) until 12 NM LPD DME, then turn left until joining ARC10 NM LPD DME; crossing RDL 069 LPD DME turn right on TR 259° (RDL 079 LPD VOR) bound to PIGOL.

MEA: LATNI (MCL 65) – INT ARC 10 NM LPD DME/RDL 069 LPD VOR: 3000 FT; INT ARC 10 NM LPD DME/RDL 069 LPD VOR – PIGOL: 2000 FT

ALAVI 3A

ALAVI – TR 246° (RDL 066 LPD VOR) fino a LPD VOR/DME.

ALAVI 3A

ALAVI – TR 246° (RDL 066 LPD VOR) bound to LPD VOR/DME.

MEA: ALAVI (MCL 50) – LPD VOR/DME: 3000 FT

ALAVI 3B

ALAVI - virare a sinistra (IAS MAX 210 kt durante la virata) su TR 222°; a 10 NM LPD DME virare destra fino ad intercettare e seguire RDL 079 LPD VOR (TR 259°) fino al punto PIGOL.

ALAVI 3B

ALAVI - turn left (IAS MAX 210 kt during turn) on TR 222°; at 10 NM LPD DME turn right until joining RDL 079 LPD VOR (TR259°) bound to PIGOL.

MEA: ALAVI (MCL 50) – PIGOL: 2000 FT

NOTE:

Malta ACC potrà richiedere ai voli con destinazione Lampedusa di attendere su LPD VOR/DME.

REMARKS:

Malta ACC may required to inbound flight destination Lampedusa to hold over LPD VOR/DME.

Intenzionalmente bianca

Intentionally left blank