

ICAO – INSTRUMENT APPROACH CHART

AD2 LICD 5-11

DOC. 8168 ED.5 2006 – AMDT 4

REMARK: The procedure is outside controlled airspace.
WARNING: Beware of other traffic. No Air Traffic Control Service provided.

AFIS *Lampedusa* **123.500**
Aerodrome Info

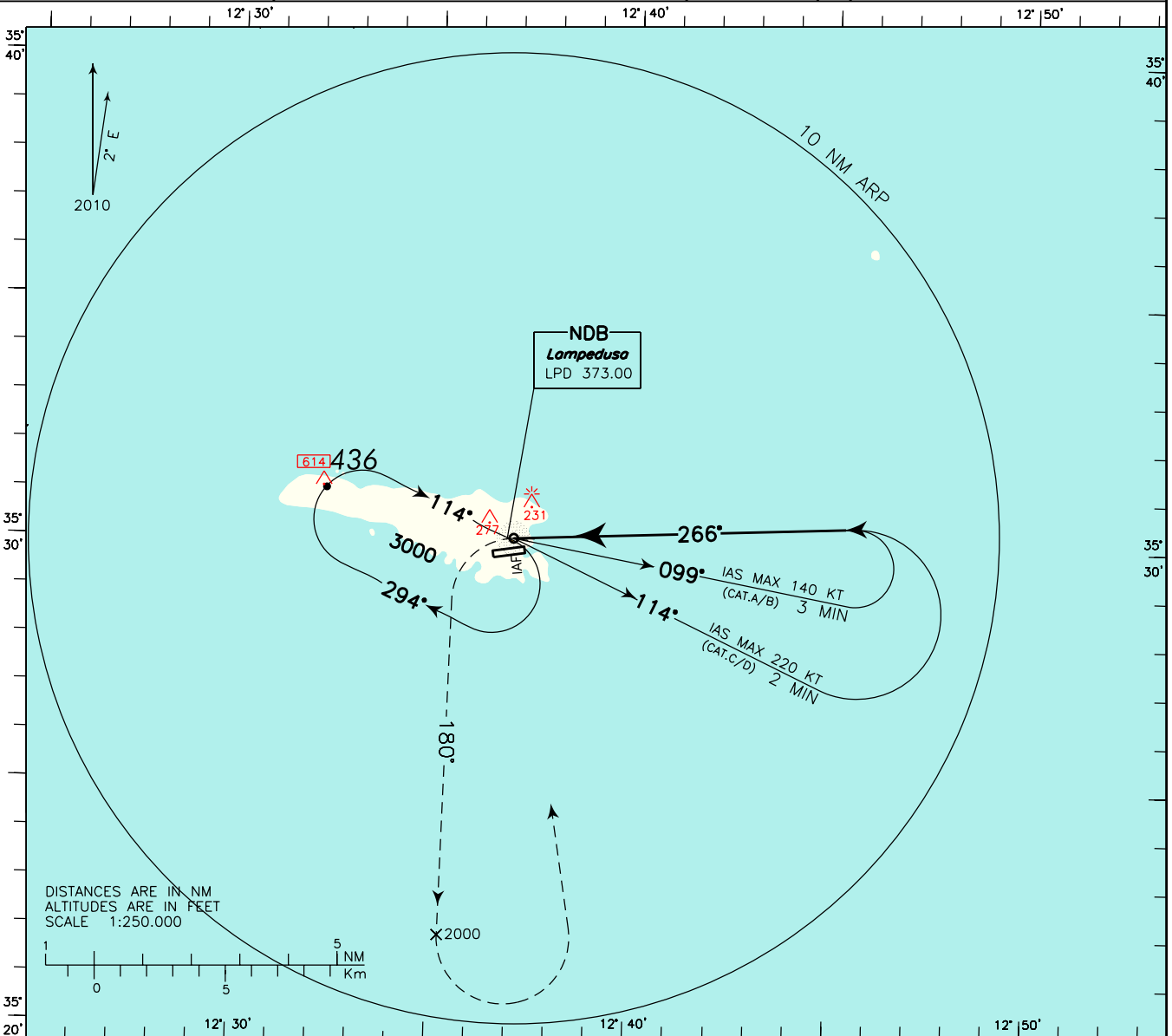
AD ELEV
66

LICD

LAMPEDUSA

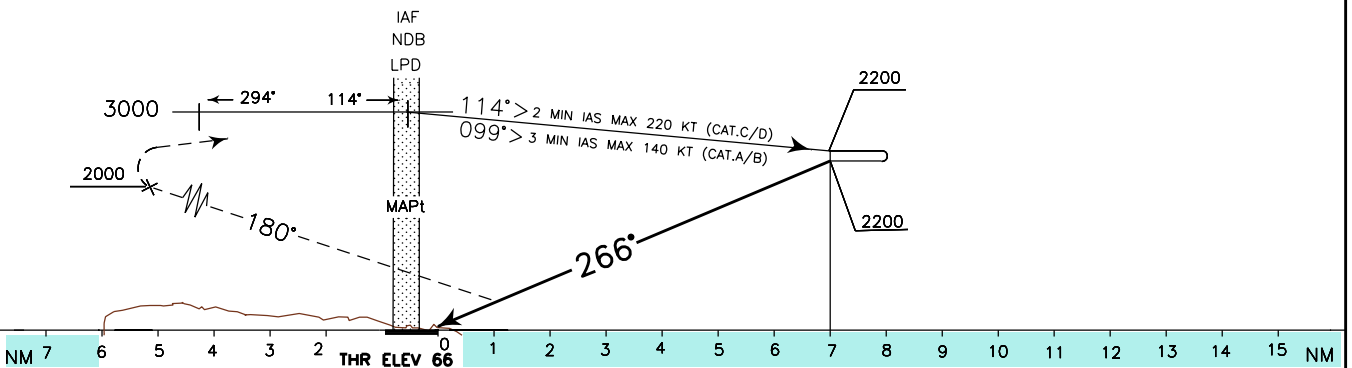
NDB-Y

RWY 26



TRANSITION ALT 3000

MISSED APPROACH: Not later than LPD NDB, climb to 3000 ft turning left on TR 180°; leaving 2000 ft turn left to LPD NDB to be reached at 3000 ft.



NM 7 6 5 4 3 2 1 0 1 2 3 4 5 6 7 8 9 10 11 12 13 14 15 NM

					PAPI descent gradient 5.2% – 3.00°					MSA 25NM LPD NDB 1700
OCA (OCH)	A	B	C	D	GS	FT/MIN				
STRAIGHT IN APPROACH	580(514)				80	425				
					100	530				
					120	635				
CIRCLING	700(634)	700(634)	1100(1034)	1100(1034)	140	745				
					160	850				

WARNING: Final approach TR 266° is offset 7' from RCL.
 RCL intercepted 1.4 NM before THR 26.

CHANGE: MAGNETIC VARIATION, AD ELEV, THR ELEV AND OCH VALUES UPDATED