

# ICAO – INSTRUMENT APPROACH CHART

AD2 LICD 5-13

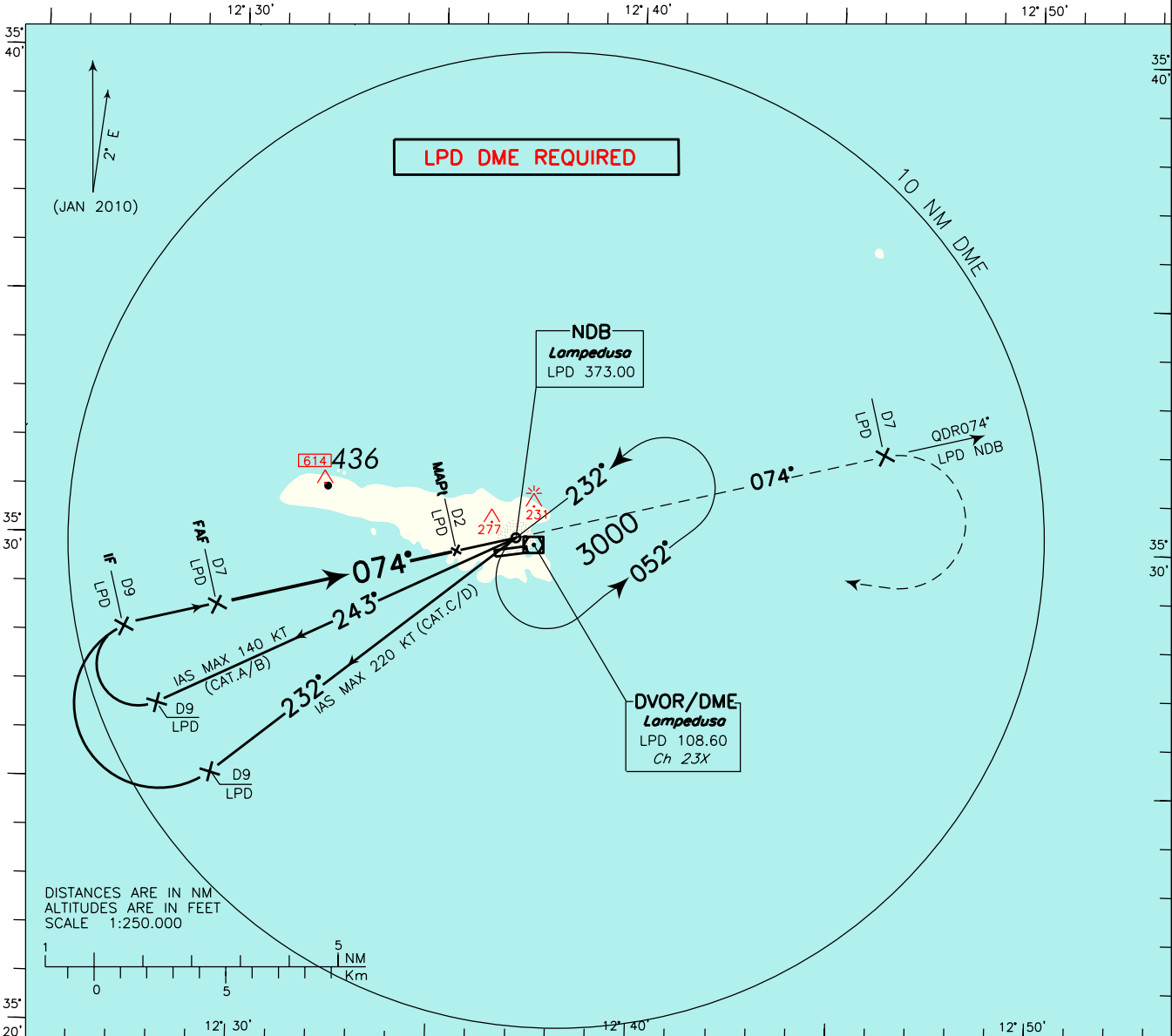
DOC. 8168 ED.5 2006 – AMDT 4  
CHANGE: MAGNETIC VARIATION, AD ELEV, THR ELEV AND OCH VALUES UPDATED

**REMARK:** The procedure is outside controlled airspace.  
**WARNING:** Beware of other traffic. No Air Traffic Control Service provided.

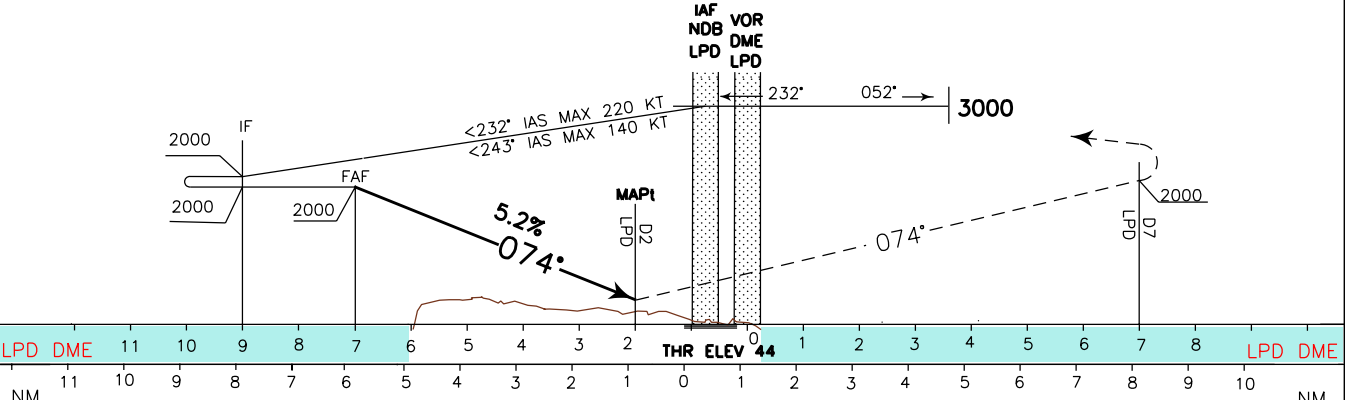
**AFIS** Lampedusa 123.500  
Aerodrome Info

**AD ELEV**  
66

**L I C D**  
**LAMPEDUSA**  
NDB-Z RWY 08



**TRANSITION ALT 3000** MISSED APPROACH: At 2 NM before LPD DME climb to 3000 ft on TR 074°. At 7 NM LPD DME, at 2000 ft or above, turn right to LPD NDB to be reached at 3000 ft.



OCA (OCH)					<b>WARNING:</b> Final approach TR 074° is offset 5° from RCL.	GS	FT/MIN	FAF-MAPt 5 NM	MAPt-THR 0.84 NM	DME	ALT(HGT)	MSA 25NM LPD NDB 1700
STRAIGHT IN APPROACH						80	425	3 : 45	0 : 38	6	1640(1596)	
						100	530	3 : 00	0 : 30	5	1320(1276)	
						120	635	2 : 30	0 : 25	4	1000(956)	
					140	745	2 : 09	0 : 22	3	690(646)		
CIRCLING					160	850	1 : 53	0 : 19	2	370(326)		