

ICAO - INSTRUMENT APPROACH CHART

AD2 LICD 5-15

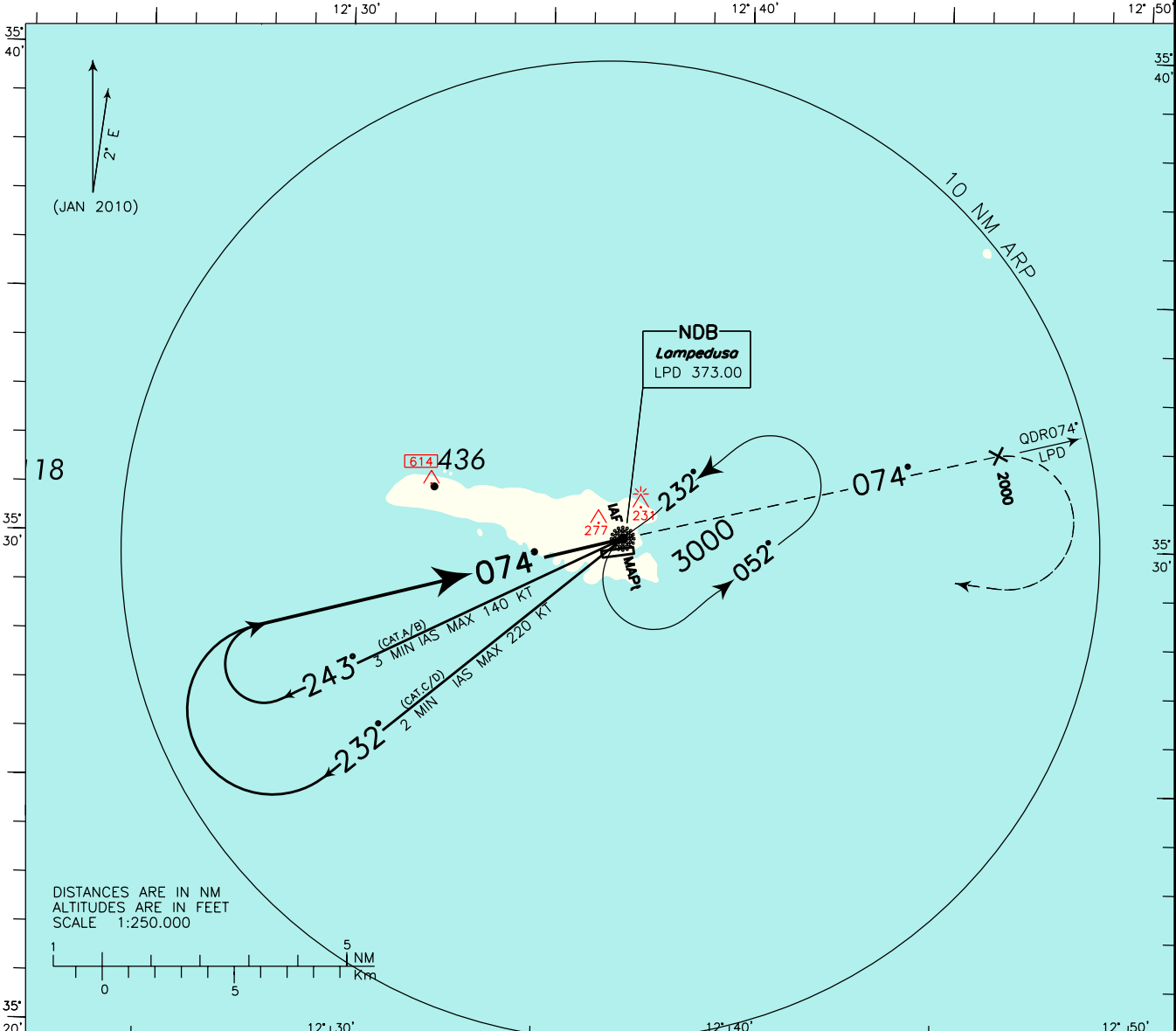
CHANGE: MAGNETIC VARIATION, AD ELEV, THR ELEV AND OCH VALUES UPDATED

REMARK: The procedure is outside controlled airspace.
WARNING: Beware of other traffic. No Air Traffic Control Service provided.

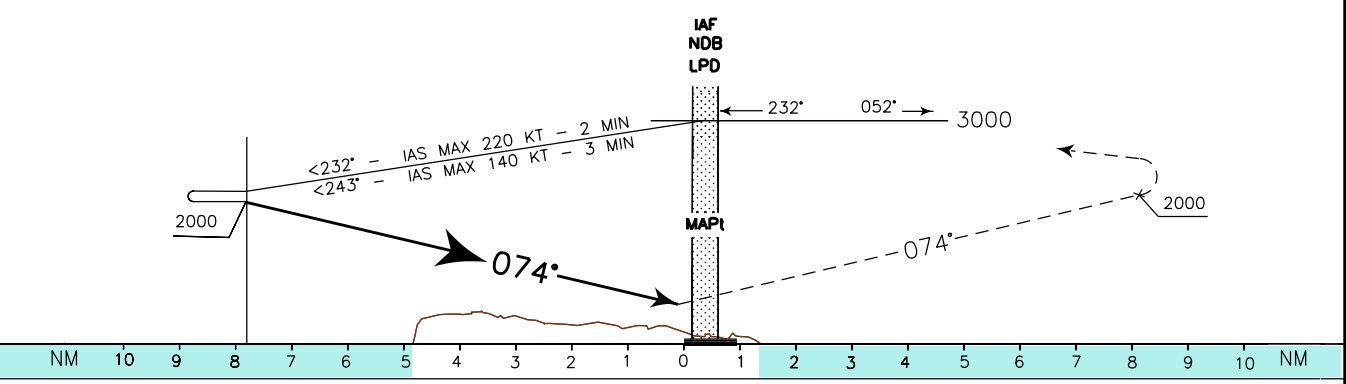
AFIS Lampedusa
Aerodrome Info **123.500**

AD ELEV
66

LAMPEDUSA
NDB-Y **RWY 08**



TRANSITION ALT 3000 MISSED APPROACH: Climb to 3000 ft on TR 074°. Passing 2000 ft turn right to LPD NDB.



OCA (OCH)					PAPI descent gradient 5.2% - 3.00°	MSA 25NM LPD NDB
A	B	C	D			
NDB					GS	1700
550 (506)					80	
					100	
					120	
					140	
CIRCLING					160	
700(634)	700(634)	1100(1034)	1100(1034)			