

ICAO - INSTRUMENT APPROACH CHART

AD2 LICD 5-17

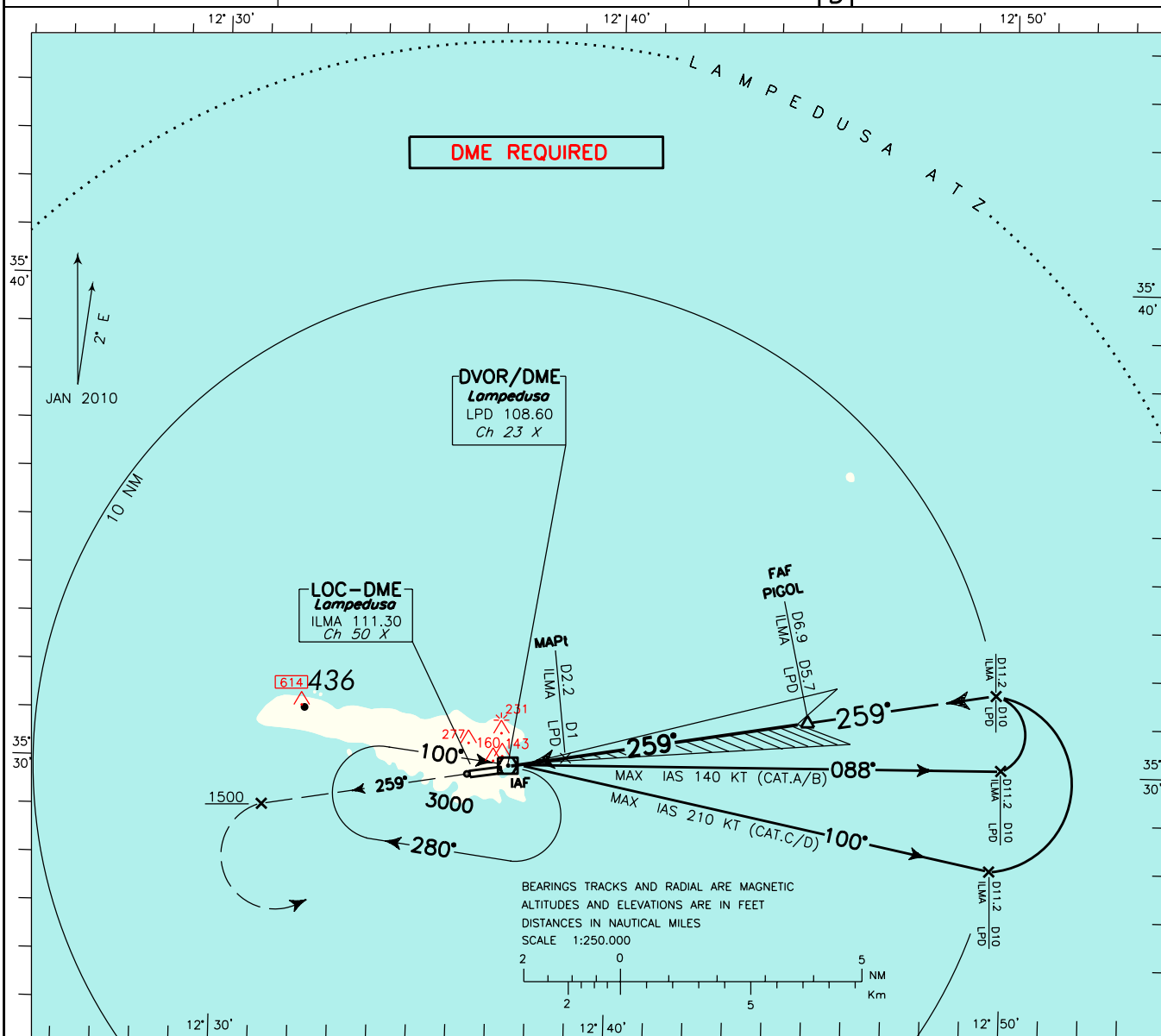
DOC. 8168 ED.5 2006 - AMDT 4

REMARK: The procedure is outside controlled airspace.
WARNING: Beware of other traffic. No Air Traffic Control Service provided.

AFIS Lampedusa **123.500**
 Aerodrome Info

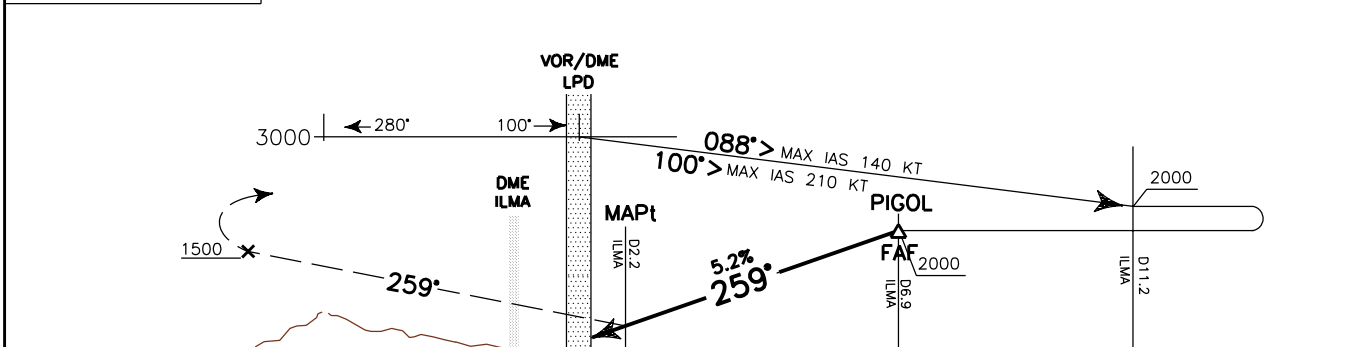
AD ELEV
66

LAMPEDUSA
LOC-Z RWY 26



TRANSITION ALT 3000

MISSED APPROACH: On TR 259° climb to 3000 ft, passing 1500 ft turn left to LPD VOR.



LPD DME 0 1 2 3 4 5 6 7 8 9 10 11 12 13 LPD DME

ILMA DME 0 1 2 3 4 5 6 7 8 9 10 11 12 13 ILMA DME

OCA (OCH)		A	B	C	D	FAF-MAPt	GS	FT PER MIN	DIST LPD	ALT (HGT)	MSA 25NM LPD VOR
STRAIGHT IN APPROACH	LOC	420(354)				4.7 NM	80	430	5 DME	1770 (1704)	1700
						3:32	100	530	4 DME	1450 (1384)	
						2:49	120	640	3 DME	1130 (1064)	
						2:01	140	740	2 DME	810 (744)	
CIRCLING		700(634)	700(634)	1100(1034)	1100(1034)	1:46	160	850	1 DME	500 (434)	