

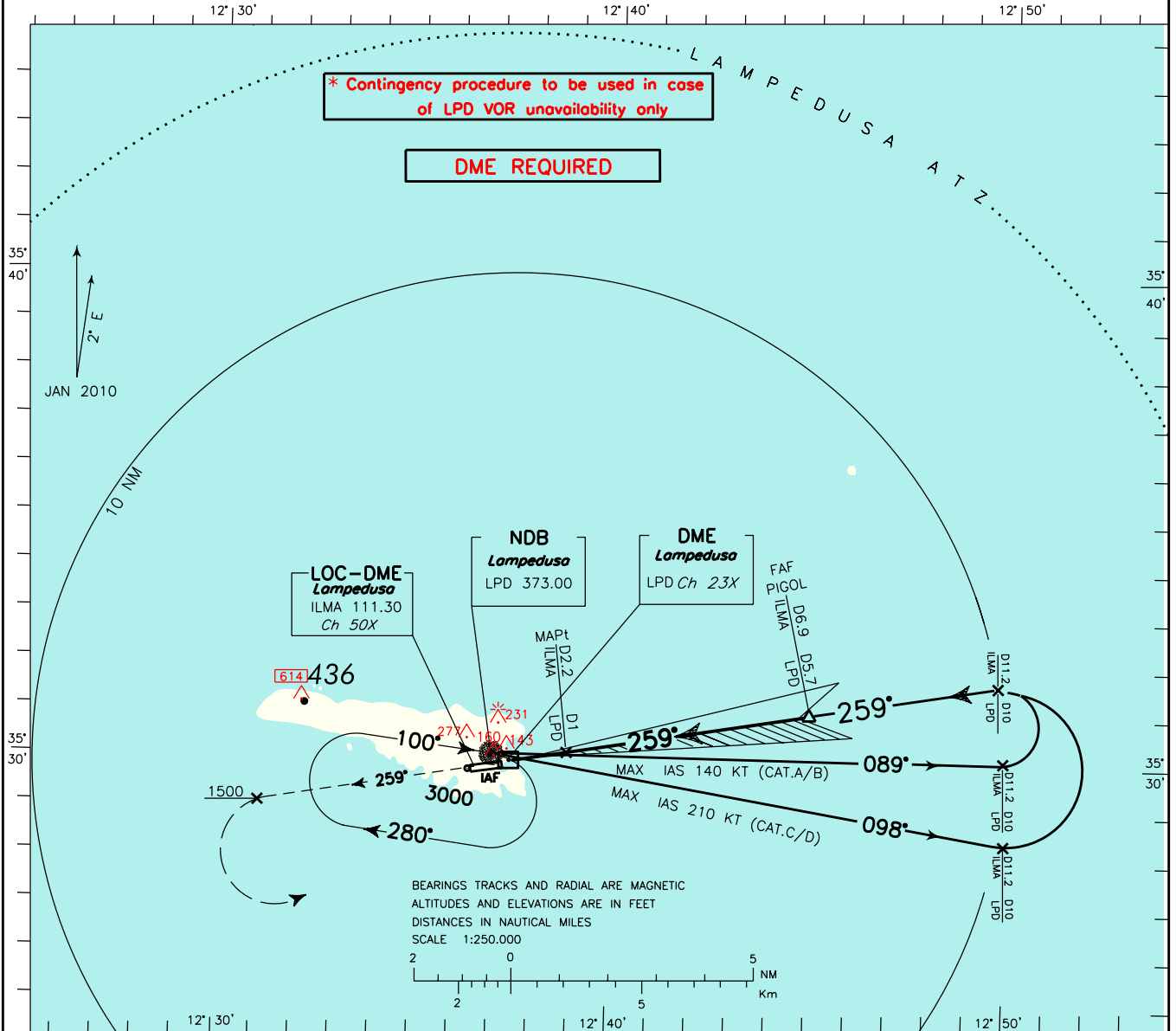
# ICAO - INSTRUMENT APPROACH CHART

AD2 LICD 5-19

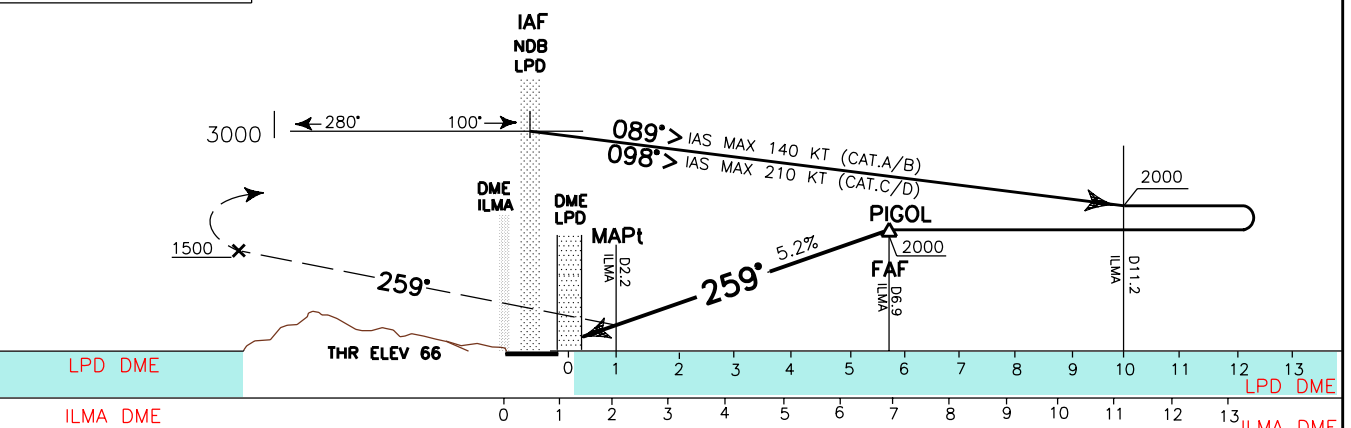
DOC. 8168 ED.5 2006 - AMDT 4

CHANGE: MAGNETIC VARIATION, AD ELEV., THR ELEV AND OCH VALUES UPDATED

<p><b>REMARK:</b> The procedure is outside controlled Airspace.</p> <p><b>WARNING:</b> Beware of other traffic. No Air Traffic Control Service provided.</p>	<p><b>AFIS</b> Lampedusa Aerodrome Info</p>	<p><b>123.500</b></p>	<p><b>AD ELEV</b> 66</p>	<p><b>LICD</b> LAMPEDUSA</p>	<p><b>LOC-Y</b>      <b>RWY 26</b></p>
--	---	-----------------------	------------------------------	----------------------------------	--



TRANSITION ALT 3000      MISSED APPROACH: Climb on TR 259° to 3000 ft, passing 1500 ft turn left to LPD NDB.



		LPD DME				LPD DME									
		ILMA DME				ILMA DME									
* STRAIGHT IN APPROACH	LOC	A	B	C	D	FAF-MAPt	GS	FT PER MIN	DIST LPD	ALT (HGT)	MSA 25NM LPD NDB <div style="border: 1px solid black; border-radius: 50%; width: 40px; height: 40px; margin: 0 auto; display: flex; align-items: center; justify-content: center;">1700</div>				
		420(354)				4.7 NM									
						3:32	80	430	5 DME	1770 (1704)					
						2:49	100	530	4 DME	1450 (1384)					
					2:21	120	640	3 DME	1130 (1064)						
CIRCLING		700(634)	700(634)	1100(1034)	1100(1034)	2:01	140	740	2 DME	810 (744)					
						1:46	160	850	1 DME	500 (434)					