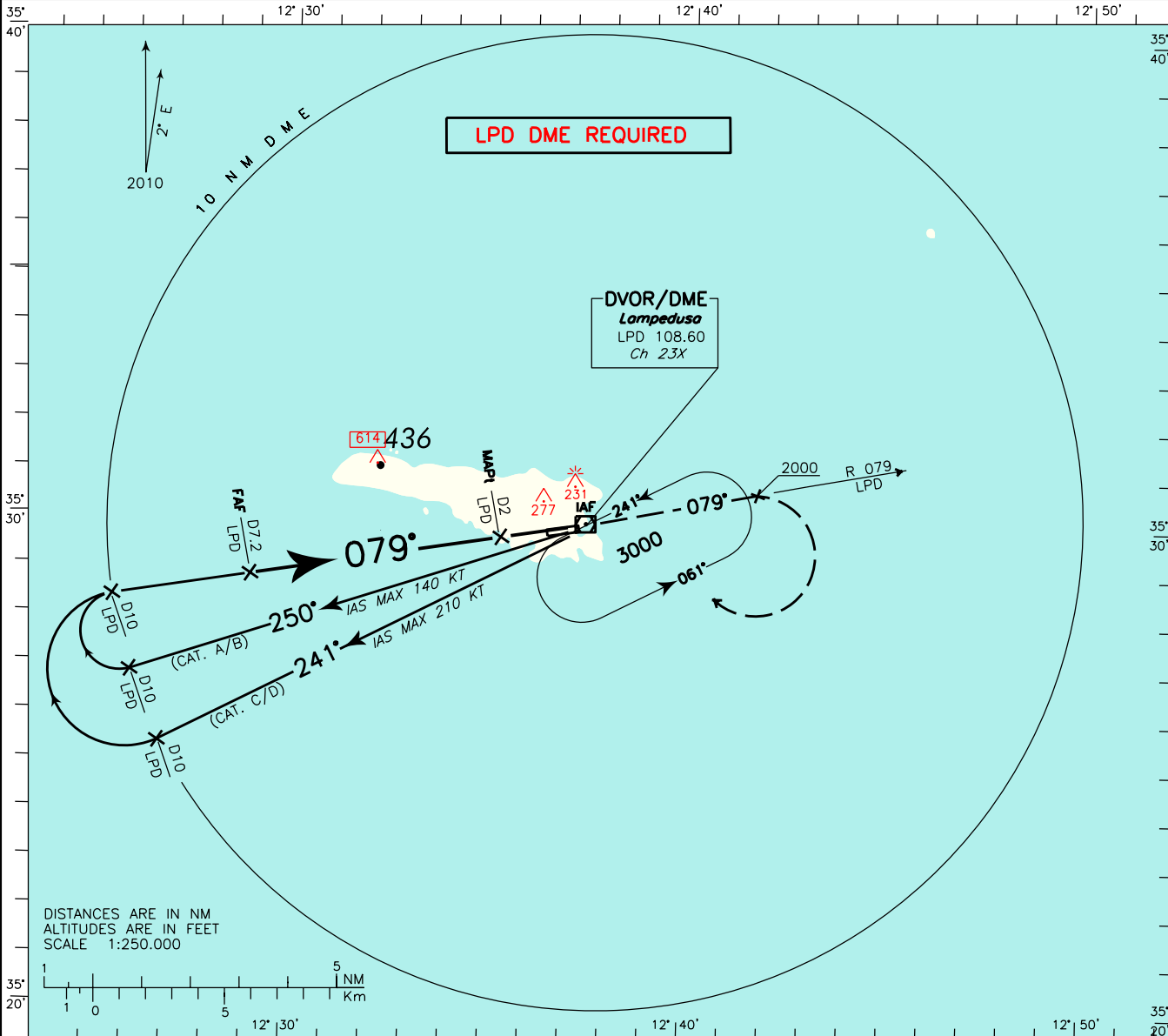


ICAO - INSTRUMENT APPROACH CHART

AD2 LICD 5-3

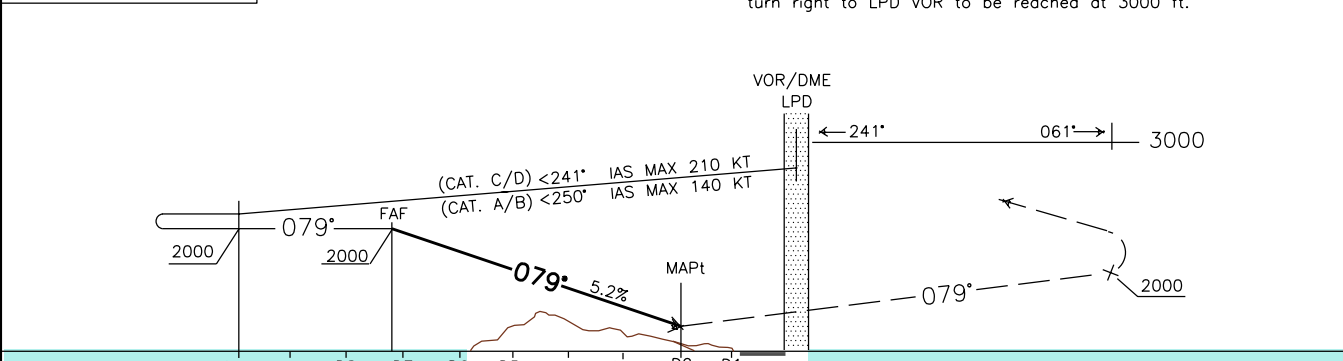
DOC. 8168 ED.5 2006 - AMDT 4

<p>REMARK: The procedure is outside controlled airspace.</p> <p>WARNING: Beware of other traffic. No Air Traffic Control Service provided.</p>	<p>AFIS Lampedusa Aerodrome Info</p>	<p>123.500</p>	<p>AD ELEV 66</p>	<p>LICD</p>	<p>LAMPEDUSA VOR RWY 08</p>
--	---	-----------------------	-------------------------------------	--------------------	--



TRANSITION ALT 3000

MISSED APPROACH: At 2 NM LPD DME climb to 3000 ft on TR 079°. Passing 2000 ft turn right to LPD VOR to be reached at 3000 ft.



	LPD DME	D10	D9	D8	D7	D6	D5	D4	D3	D2	D1	THR ELEV 44	LPD DME												
	13	12	11	10	9	8	7	6	5	4	3	2	1	0	1	2	3	4	5	6	7	8	9	10	NM

STRAIGHT IN APPROACH		A	B	C	D		GS	FT PER MIN	DIST	ALT (HGT)	MSA 25NM LPD VOR
	OCA (OCH)	500(456)					80	430	6 DME	1640 (1596)	
						100	530	5 DME	1320 (1276)		
						120	640	4 DME	1000 (956)		
						140	740	3 DME	690 (646)		
						160	850	2 DME	370 (326)		
CIRCLING		700 (634)	700 (634)	1100 (1034)	1100 (1034)						