

ICAO - INSTRUMENT APPROACH CHART

AD2 LICD 5-5

DOC. 8168 ED.5 2006 - AMDT 4

REMARK: The procedure is outside controlled Airspace.
WARNING: Beware of other traffic. No Air Traffic Control Service provided.

AFIS Lampedusa 123.500
 Aerodrome Info

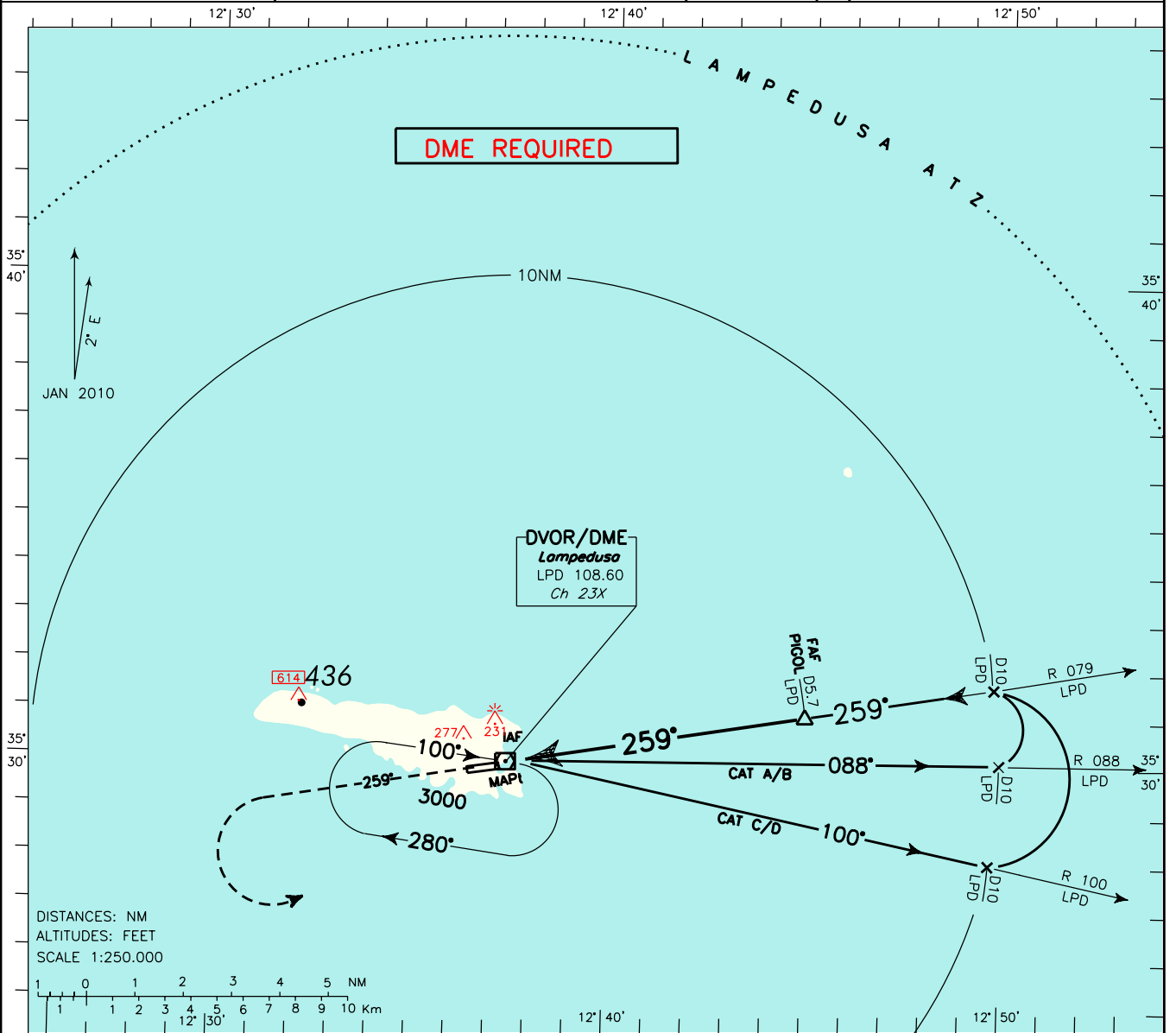
AD ELEV
 66

LICD

LAMPEDUSA

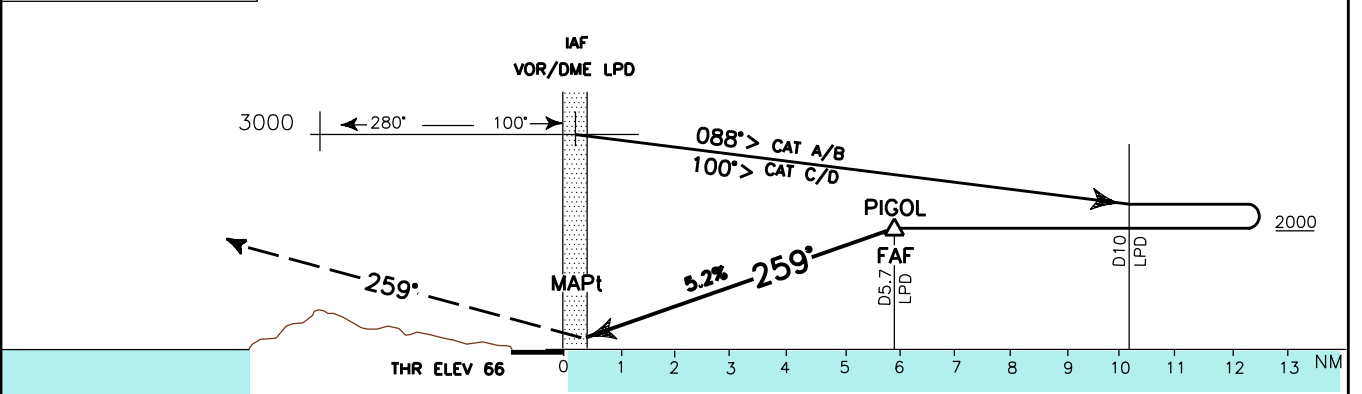
VOR-Z

RWY 26



TRANSITION ALT 3000

MISSED APPROACH: Climb straight ahead to 3000 ft, then turn left to LPD VOR.



LPD DME 0 1 2 3 4 5 6 7 8 9 10 11 12 13 **LPD DME**

CAT	A	B	C	D	RECOMMENDED PROFILE Gradient 5.2% (320FT/NM)	GS	FT PER MIN	DIST	ALT (HGT)	MSA 25NM LPD VOR 1700
						80	430	5 DME	1770 (1704)	
STRAIGHT IN APPROACH	OCA (OCH) 500(434)					100	530	4 DME	1450 (1384)	
						120	640	3 DME	1130 (1064)	
						140	740	2 DME	810 (744)	
						160	850	1 DME	490 (424)	
CIRCLING	700(634)	700(634)	1100(1034)	1100(1034)						