

ICAO - INSTRUMENT APPROACH CHART

AD2 LICD 5-7

DOC. 8168 ED.5 2006 - AMDT 4

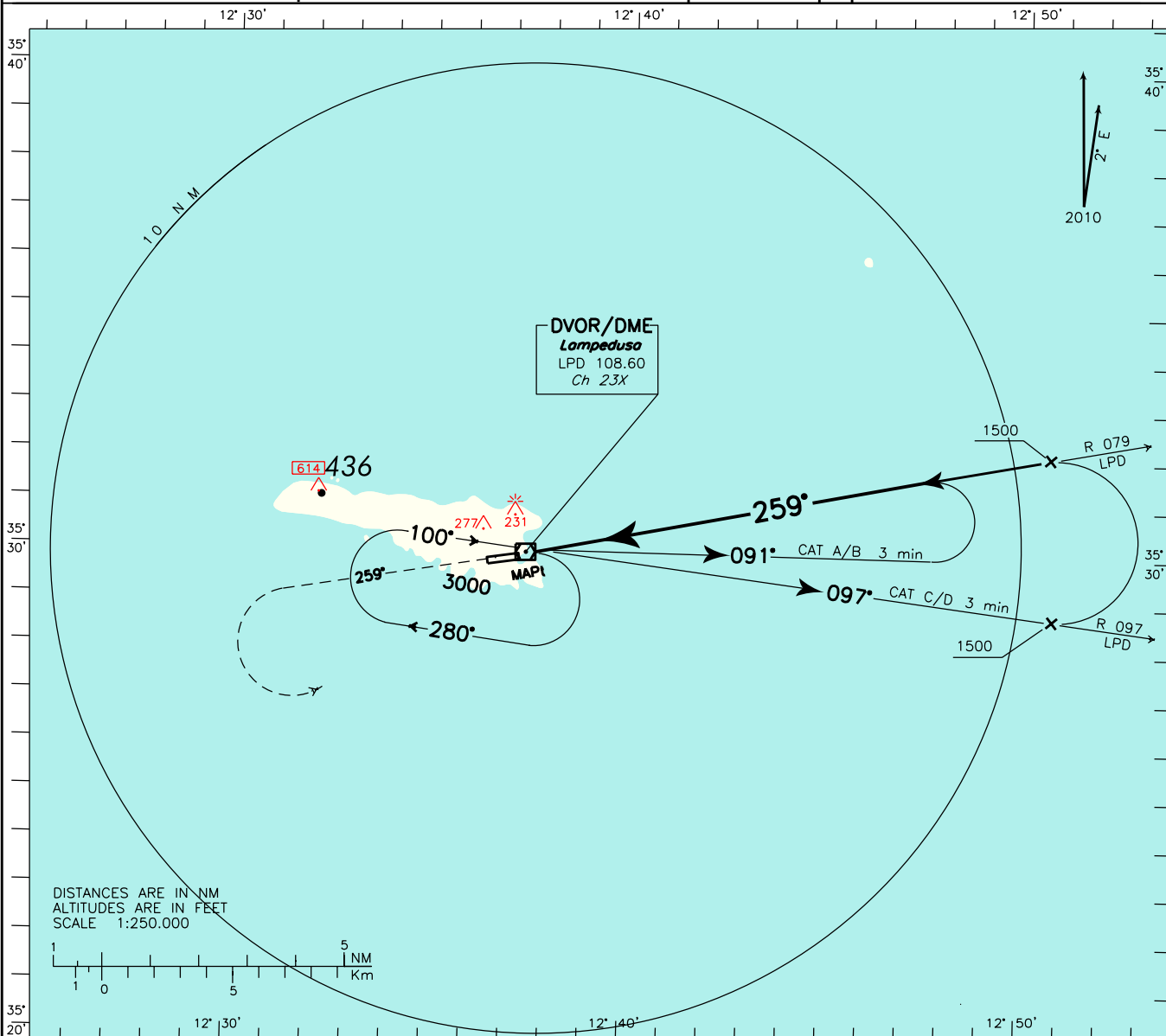
REMARK: The procedure is outside controlled airspace.
WARNING: Beware of other traffic. No Air Traffic Control Service provided.

AFIS Lampedusa
Aerodrome Info

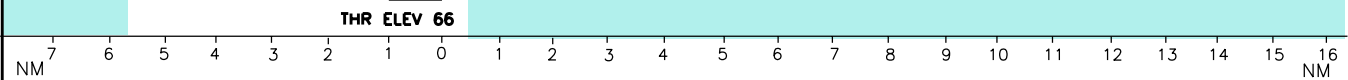
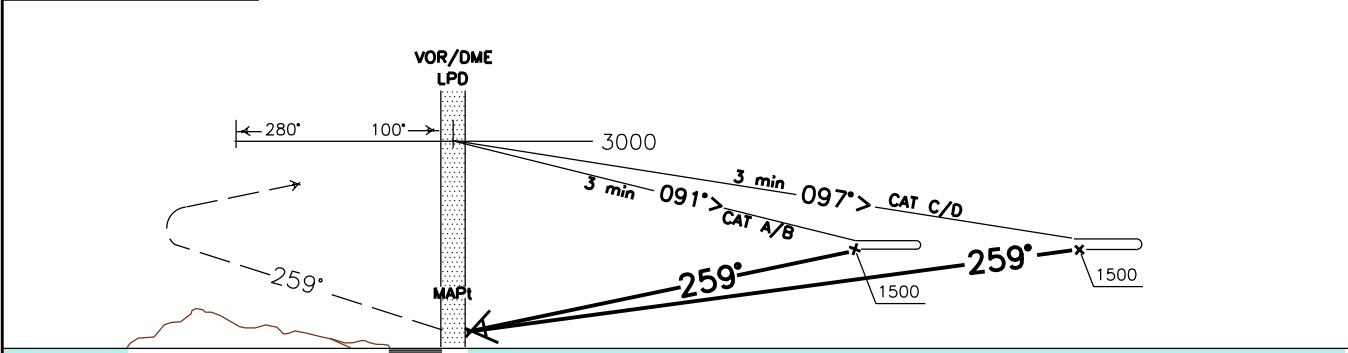
123.500

AD ELEV
66

LICD LAMPEDUSA
VOR-Y **RWY 26**



TRANSITION ALT 3000 MISSED APPROACH: Climb straight ahead to 3000 ft, then turn left to LPD VOR.



OCA (OCH)		A	B	C	D	MSA 25NM LPD VOR
STRAIGHT IN APPROACH	VOR	500(434)				
CIRCLING		700(634)	700(634)	1100(1034)	1100(1034)	

* CHANGE: MAGNETIC VARIATION, AD ELEV, THR ELEV AND OCH VALUES UPDATED