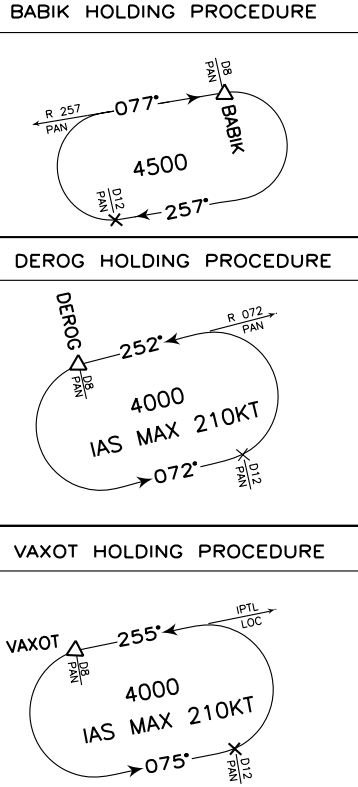
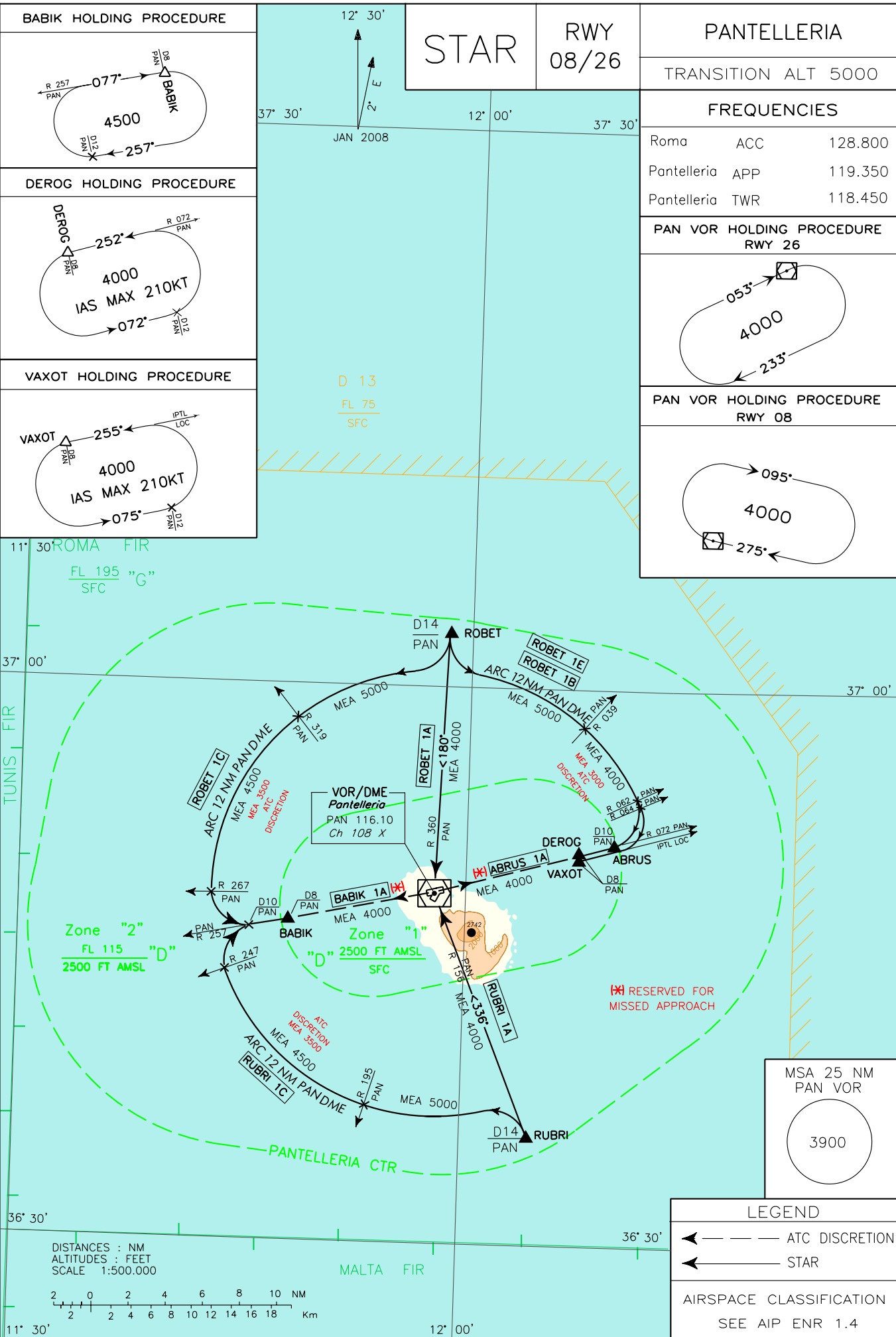
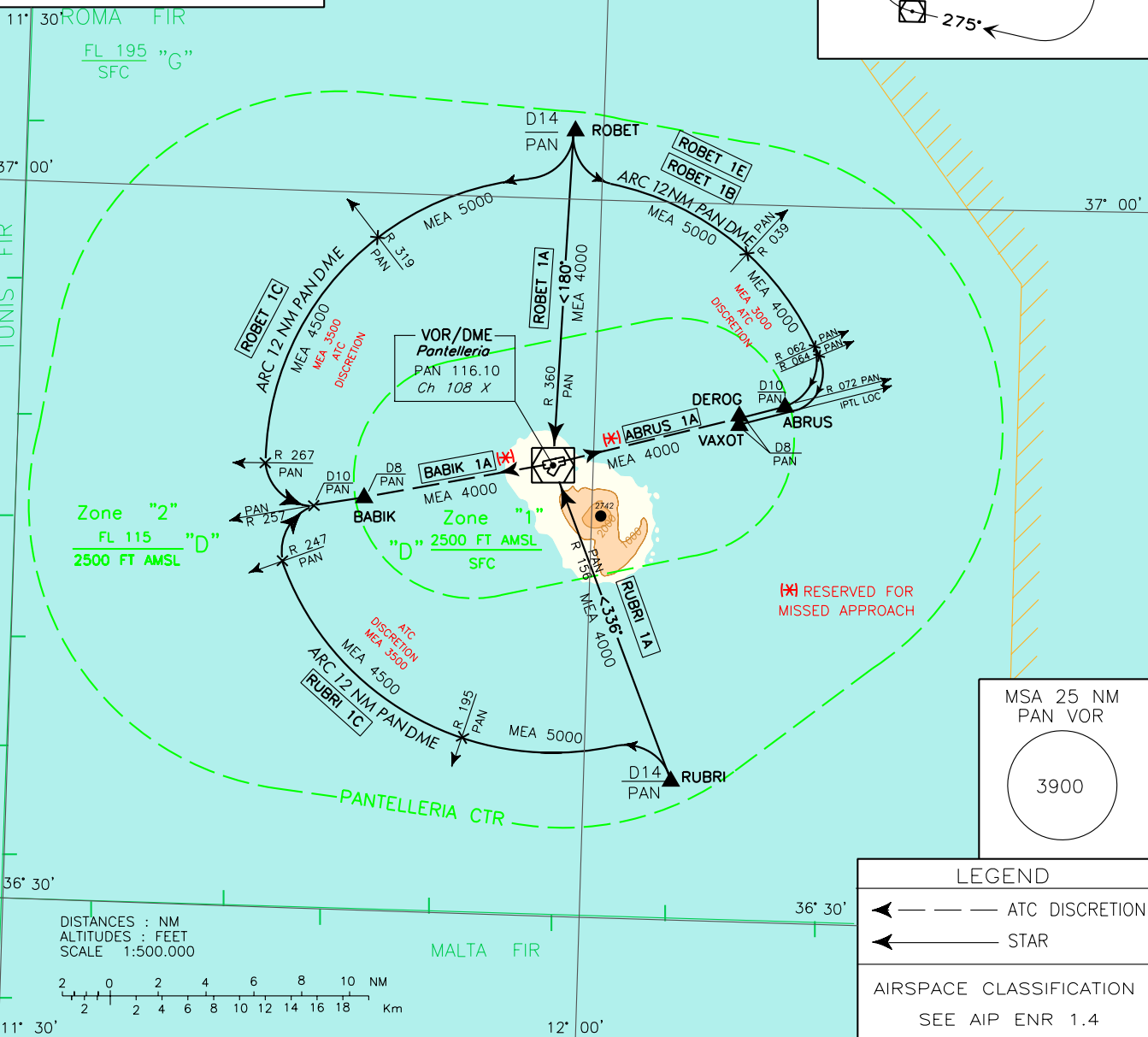


DOC.8168-ED.5 2006 - AMDT.4

CHANGE: NEW STAR "ROBET 1E" and REP "VAXOT" (with HOLDING) IMPLEMENTED



PANTELLERIA		
TRANSITION ALT 5000		
FREQUENCIES		
Roma	ACC	128.800
Pantelleria	APP	119.350
Pantelleria	TWR	118.450
PAN VOR HOLDING PROCEDURE RWY 26		
PAN VOR HOLDING PROCEDURE RWY 08		



STAR RWY 08/26

ROBET 1A
ROBET – PAN VOR/DME.

ROBET 1A
ROBET – PAN VOR/DME.

MEA: ROBET – PAN VOR/DME: 4000FT

ROBET 1B
ROBET – quindi virare a sinistra per intercettare e seguire ARC 12 NM PAN DME. Attraversando RDL 062 PAN VOR virare a destra per intercettare e seguire RDL 072 PAN VOR diretti al DEROG.

ROBET 1B
ROBET – then turn left to intercept and follow ARC 12 NM PAN DME. Crossing RDL 062 PAN VOR turn right to intercept and follow RDL 072 PAN VOR bound to DEROG.

MEA: ROBET – INT ARC 12 NM PAN DME/RDL 039 PAN VOR: 5000FT; INT ARC 12 NM PAN DME/RDL 039 PAN VOR – DEROG: 4000 FT (3000 FT ATC DISCRETION)

ROBET 1C
ROBET – quindi virare a destra per intercettare e seguire ARC 12 NM PAN DME. Attraversando RDL 267 PAN VOR virare a sinistra per intercettare e seguire RDL 257 PAN VOR diretti al BABIK.

ROBET 1C
ROBET – then turn right to intercept and follow ARC 12 NM PAN DME. Crossing RDL 267 PAN VOR turn left to intercept and follow RDL 257 PAN VOR bound to BABIK.

MEA: ROBET – INT ARC 12 NM PAN DME/RDL 319 PAN VOR: 5000FT; INT ARC 12 NM PAN DME/RDL 319 PAN VOR – BABIK: 4500 FT (3500 FT ATC DISCRETION)

RUBRI 1A
RUBRI – PAN VOR/DME.

RUBRI 1A
RUBRI – PAN VOR/DME.

MEA: RUBRI – PAN VOR/DME: 4000FT

RUBRI 1C
RUBRI – quindi virare a sinistra per intercettare e seguire ARC 12 NM PAN DME. Attraversando RDL 247 PAN VOR virare a destra per intercettare e seguire RDL 257 PAN VOR diretti al BABIK.

RUBRI 1C
RUBRI – then turn left to intercept and follow ARC 12 NM PAN DME. Crossing RDL 247 PAN VOR turn right to intercept and follow RDL 257 PAN VOR bound to BABIK.

MEA: RUBRI – INT ARC 12 NM PAN DME/RDL 195 PAN VOR: 5000FT; INT ARC 12 NM PAN DME/RDL 195 PAN VOR – BABIK: 4500 FT (3500 FT ATC DISCRETION)

BABIK 1A
BABIK – PAN VOR/DME.

BABIK 1A
BABIK – PAN VOR/DME.

NOTA: STAR riservata al mancato avvicinamento

REMARK: STAR reserved for missed approach

MEA: BABIK – PAN VOR/DME: 4000FT

ABRUS 1A
ABRUS – PAN VOR/DME.

ABRUS 1A
ABRUS – PAN VOR/DME.

NOTA: STAR riservata al mancato avvicinamento

REMARK: STAR reserved for missed approach

MEA: ABRUS – PAN VOR/DME: 4000FT

ROBET 1E
ROBET – quindi virare a sinistra per intercettare e seguire ARC 12 NM PAN DME. Attraversando RDL 064 PAN VOR virare a destra per intercettare e seguire IPTL LOC (TR 255°) diretti al VAXOT.

ROBET 1E
ROBET – then turn left to intercept and follow ARC 12 NM PAN DME. Crossing RDL 064 PAN VOR turn right to intercept and follow IPTL LOC (TR 255°) bound to VAXOT.

MEA: ROBET – INT ARC 12 NM PAN DME/RDL 039 PAN VOR: 5000FT; INT ARC 12 NM PAN DME/RDL 039 PAN VOR – VAXOT: 4000 FT (3000 FT ATC DISCRETION)

Intenzionalmente bianca

Intentionally left blank