

ICAO - INSTRUMENT APPROACH CHART

AD 2 LICG 5-13

WARNING : Due to orographic and artificial obstacles PAPI indications not usable last 200M before THR

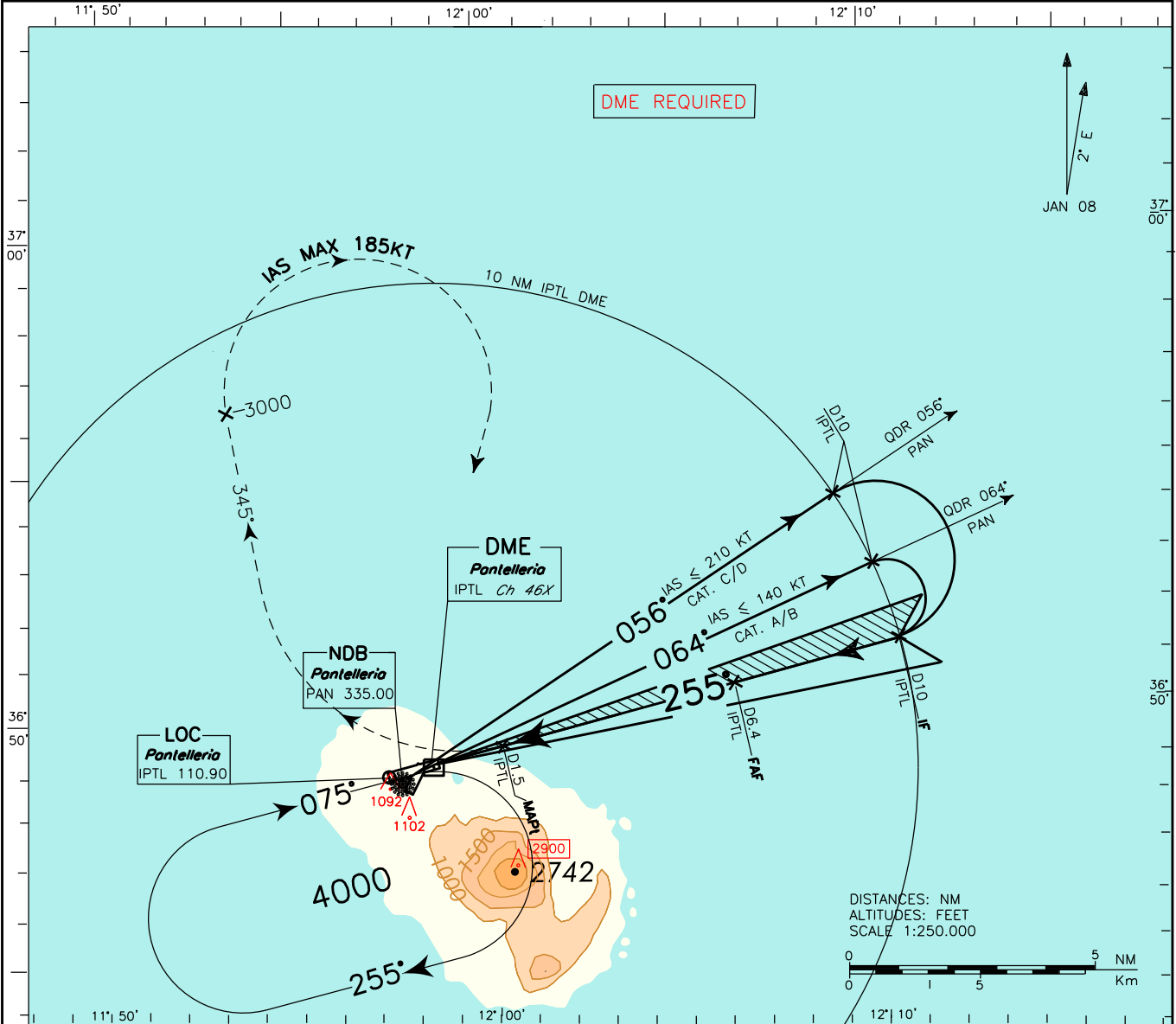
APP Pantelleria Approach 119.350
TWR Pantelleria Tower 118.450

AD ELEV 628

LICG PANTELLERIA
LOC-X RWY 26

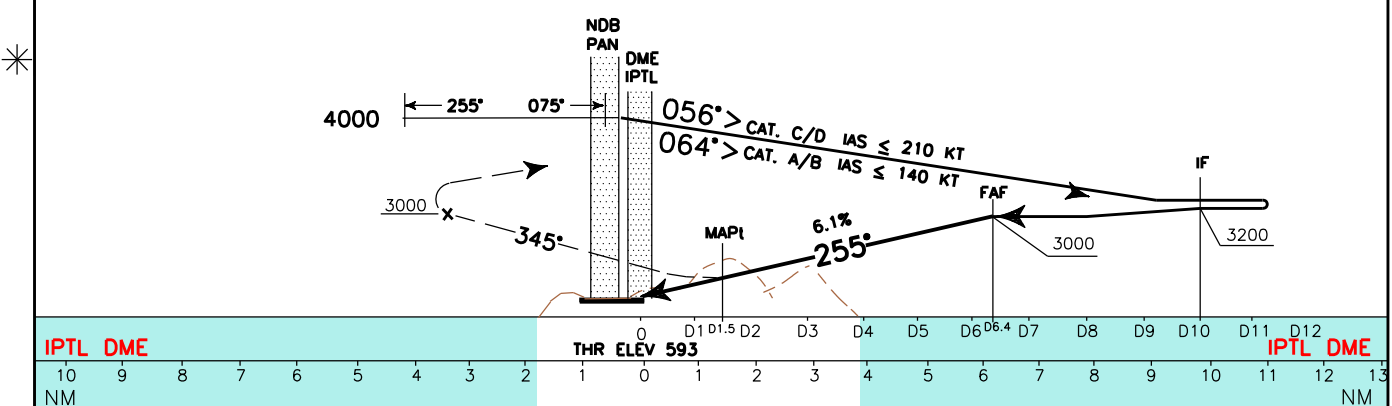
DOC.8168-ED.5 2006 - AMDT.4

NEW CHART



TRANSITION ALT 5000

MISSED APPROACH: At 1.5 NM IPTL DME, climbing to 4000 ft turn right on TR 345°. Passing 3000 ft turn right (IAS MAX 185 kt) to PAN NDB to be reached at 4000 ft.



IPTL DME THR ELEV 593 IPTL DME

STRAIGHT-IN LANDING RWY 26				CIRCLE TO LAND		CIRCLING SECTORS	GS	FT PER MIN	FAF-MAP 4.9 NM	MAP-THR 1.46 NM	DME IPTL	ALT (HGT)	MSA 25NM PAN NDB
OCA (OCH)	A	B	C	D	MAX KT								
LOC	1300 (707)												
A	2250M	2250M	ALS OUT		100	1600 (972)	2100 (1472)	VS 3000M	80	3 : 41	1 : 06	6 2860 (2267)	3900
B			135	VS 3600M	100			2 : 56	0 : 53	5 2490 (1897)			
C	3000M	3000M	180	VS 5400M	120	2 : 27	0 : 44	4 2120 (1527)					
D			205	1700 (1072)	140	2 : 06	0 : 38	3 1750 (1157)					
					160	1 : 50	0 : 33	1 1000 (397)					