

DOC.8168-ED.5 2006 – AMDT. 4

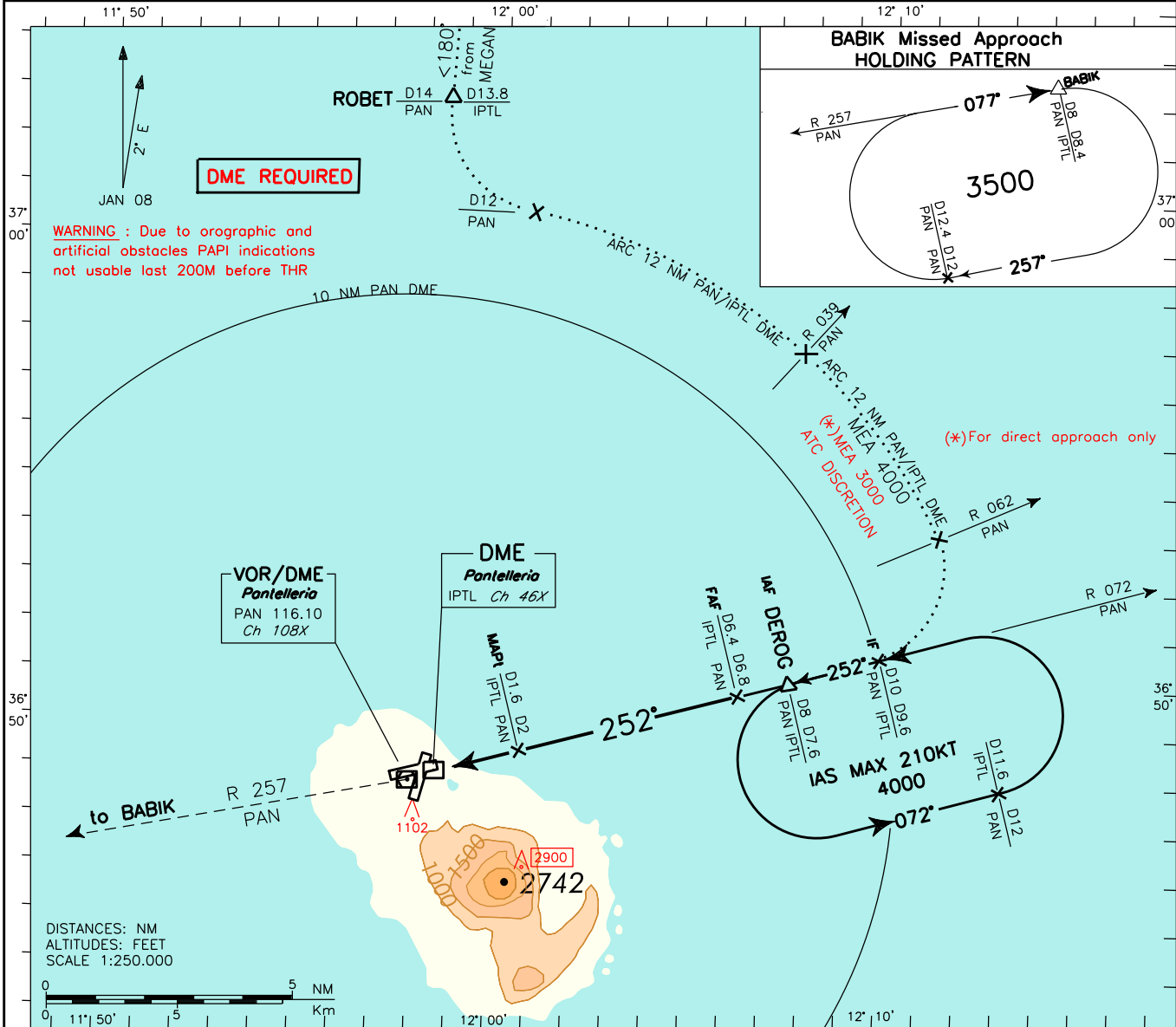
CHANGE: RENUMBERED PAGE

REMARK:
 Final approach track off set 2.7° from RWY center line.
 RWY center line intercepted 2341m before THR26.

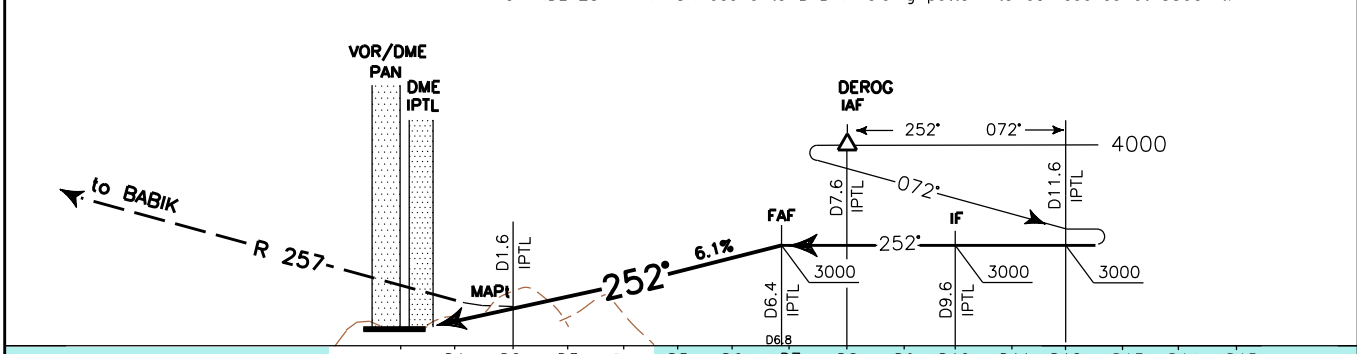
APP Pantelleria Approach **119.350**
TWR Pantelleria Tower **118.450**

AD ELEV
629

LICG
PANTELLERIA
VOR – Z RWY 26



TRANSITION ALT 5000 **MISSED APPROACH:** Not later than 2 NM before PAN DME climb to 3500 ft direct to PAN VOR. Then proceed on RDL 257 PAN VOR bound to BABIK holding pattern to be reached at 3500 ft.



PAN DME													PAN DME												
THR ELEV 594																									
7 6 5 4 3 2 1 0 1 2 3 4 5 6 7 8 9 10 11 12 13													7 6 5 4 3 2 1 0 1 2 3 4 5 6 7 8 9 10 11 12 13												
NM													NM												

STRAIGHT-IN LANDING RWY 26		CIRCLE TO LAND		CIRCLING SECTORS	GS	FT PER MIN	FAF-MAP1	MAP1-THR	DME PAN	ALT (HGT)	MSA 25NM PAN VOR
OCA(H)	1600(1006)	MAX KT	OCA(H)								
A	2250M	100	1600 (971)	2100 (1471)	80	500	3 : 36	1 : 08	6	2690 (2096)	3900
B	2250M	135	1600 (971)	2100 (1471)	100	620	2 : 53	0 : 55	5	2320 (1726)	
C	2700M	180	1700 (1071)	2100 (1471)	120	740	2 : 24	0 : 46	4	1950 (1356)	
D	3000M	205	1700 (1071)	2100 (1471)	140	870	2 : 03	0 : 39	3	1580 (986)	
					160	990	1 : 48	0 : 34	2	1210 (616)	