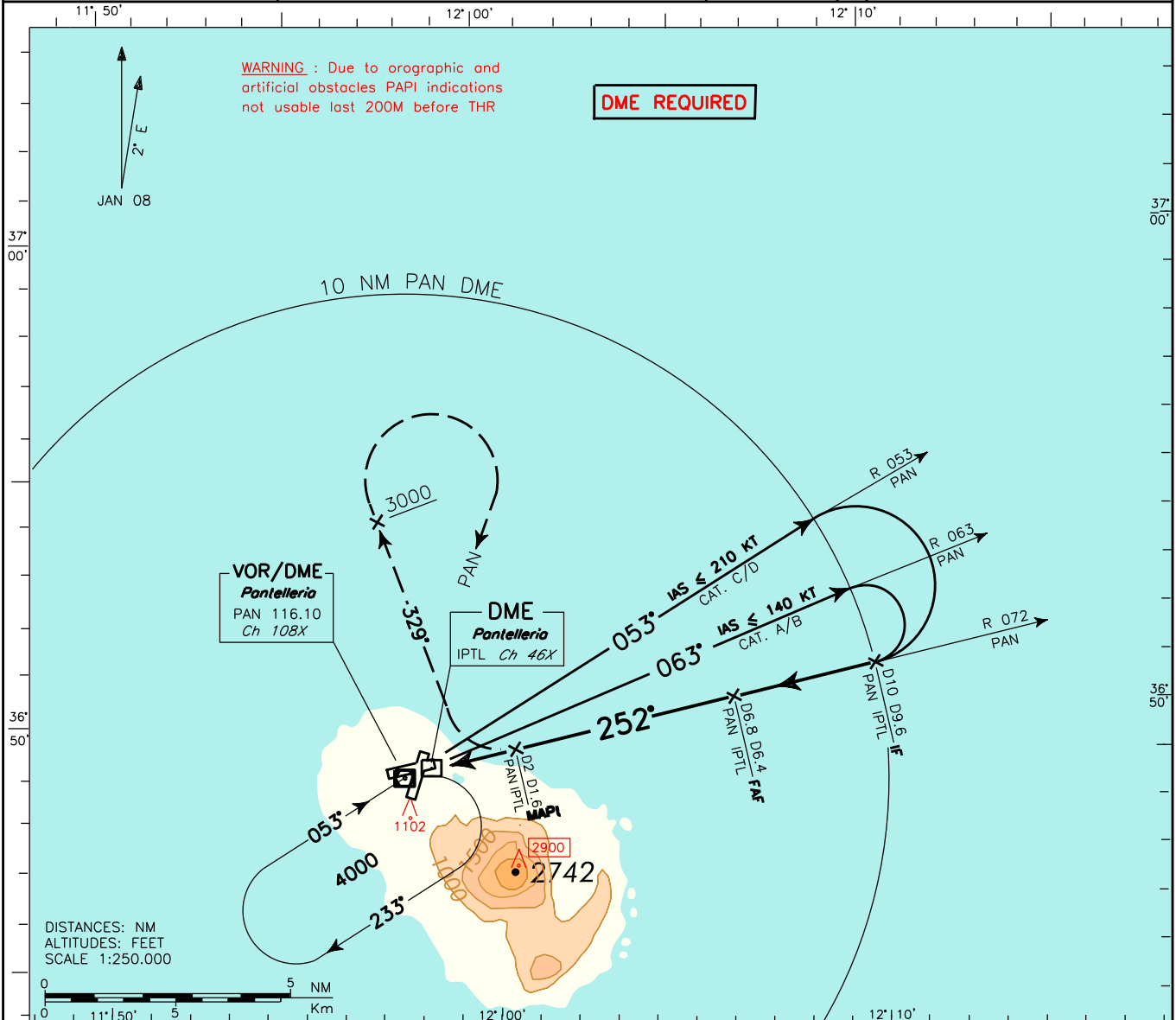


DOC.8168 - ED.5 2006 - AMDT.4

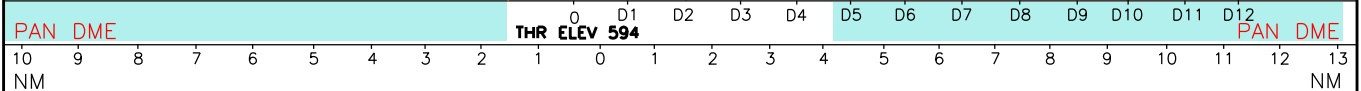
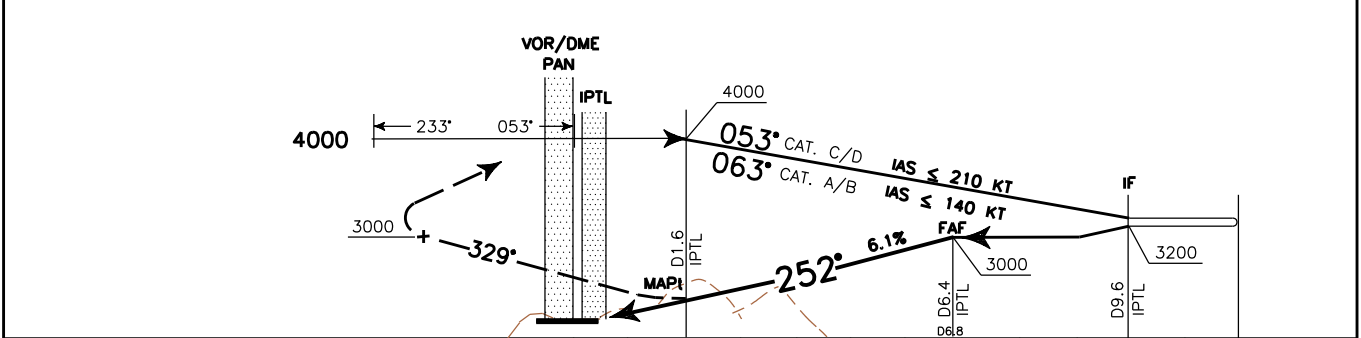
CHANGE: IF ALTITUDE MODIFIED AND RENUMBERED PAGE

REMARK: Final Approach Track off set 2.7' from RWY center line. RWY center line intercepted 2341 m before THR26.	APP Pantelleria Approach 119.350	AD ELEV 629	LICG PANTELLERIA VOR-Y RWY 26
	TWR Pantelleria Tower 118.450		



TRANSITION ALT 5000

MISSED APPROACH: Not later than 2 NM before PAN DME climb to 4000 ft turning right on track 329°, then passing 3000 ft turn right to PAN VOR to be reached at 4000 ft.



STRAIGHT-IN LANDING RWY 26		CIRCLE TO LAND		CIRCLING SECTORS	GS	FT PER MIN	FAF-MAPi		MAPi-THR		DME PAN	ALT (HGT)	MSA 25NM PAN VOR
OCA(H)	MDA(H)	OCA(H)	MDA(H)				4.8 NM	1.52 NM	D	1			
1600(1006)	1600(1006)	1600(971)	2100(1471)		80	500	3 : 36	1 : 08	6	2690 (2096)			
A	2250M	100	2100(1471)		100	620	2 : 53	0 : 55	5	2320 (1726)			
		135			120	740	2 : 24	0 : 46	4	1950 (1356)			
		180			140	870	2 : 03	0 : 39	3	1580 (986)			
		205			160	990	1 : 48	0 : 34	2	1210 (616)			
B	2250M	100	2100(1471)	1	840 (246)								
C	2700M	180	2100(1471)										
D	3000M	205	2100(1471)										