

DOC.8168 - ED.5 2006

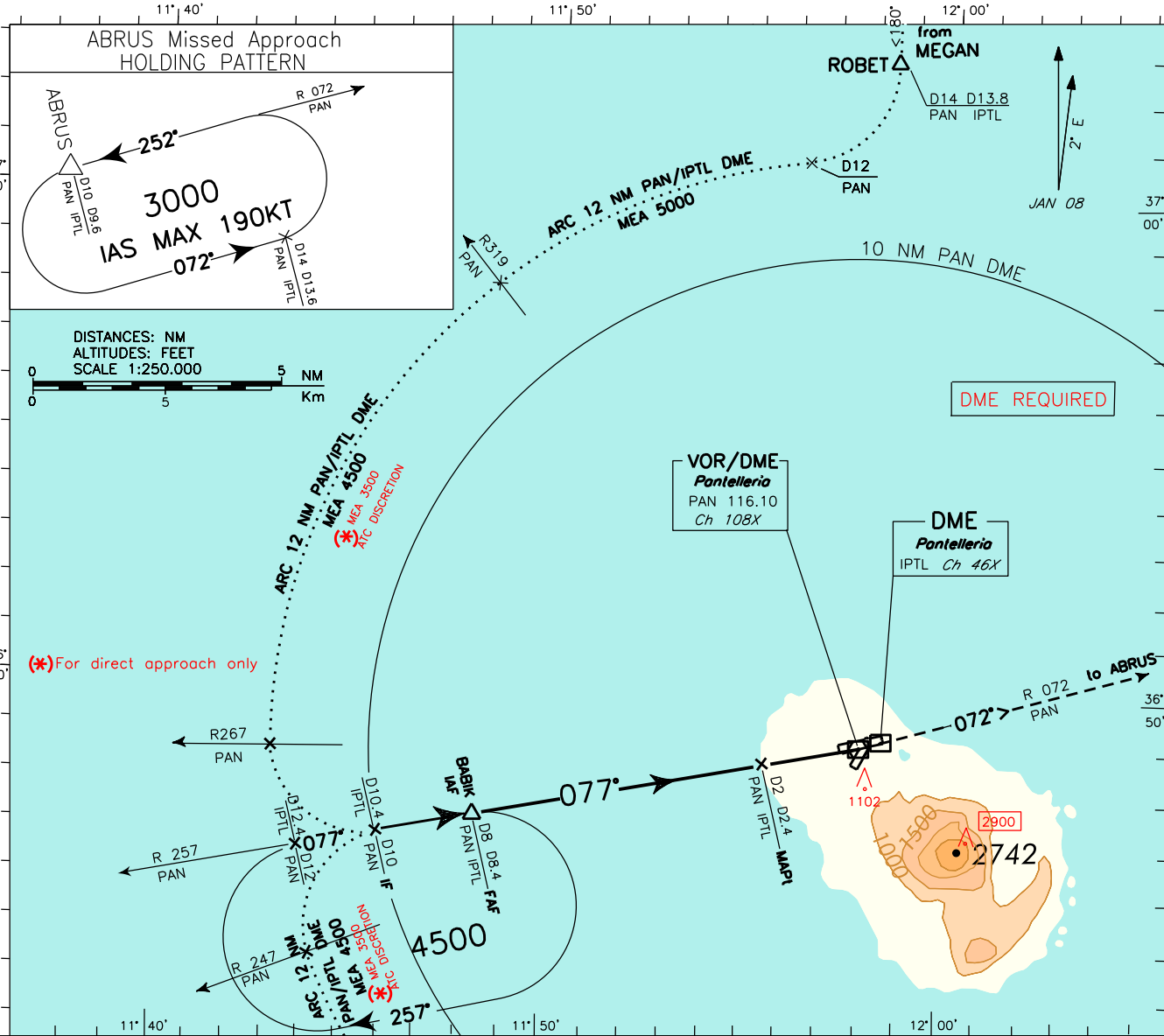
CHANGE: RENUMBERED PAGE

**REMARK:**  
 final approach track off set 2.3' from RWY center line.  
 RWY center line intercepted 2902 m before THR 08.

**APP** Pantelleria Approach 119.350  
**TWR** Pantelleria Tower 118.450

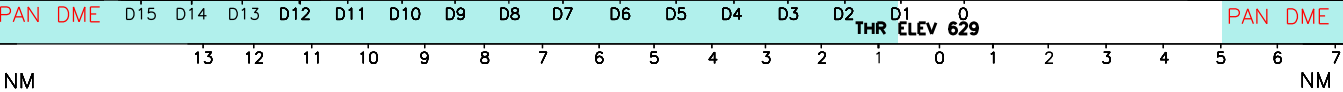
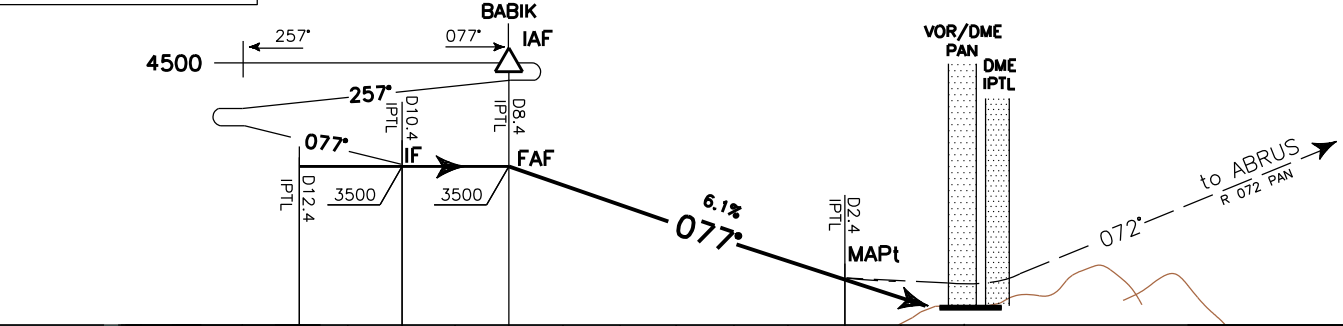
**AD ELEV**  
**629**

**LICG**  
**PANTELLERIA**  
**VOR-Z RWY 08**



**MISSED APPROACH:** Not later than 2 NM before PAN DME climb to 3000 ft direct to PAN VOR. Then proceed on RDL 072 PAN VOR bound to ABRUS holding pattern, to be reached at 3000 ft.

TRANSITION ALT 5000



STRAIGHT-IN LANDING RWY 08		CIRCLE TO LAND		CIRCLING SECTORS	GS	FT PER MIN	FAF-MAPt	MAPt-THR	DME	ALT (HGT)	MSA 25NM PAN VOR
OCA(H) 1350(721)	MDA(H) 1650(1021)	MAX KT	OCA(H)								
A	2250M	100	1600 (971)	2100 (1471)	VIS 3000M	80	4 : 30	1 : 11	7	3120 (2491)	3900
B		135				5	2750 (2121)				
C	3000M	180	1700 (1071)			4	2380 (1751)				
D		205				3	1640 (1011)				
					2	1270 (641)					